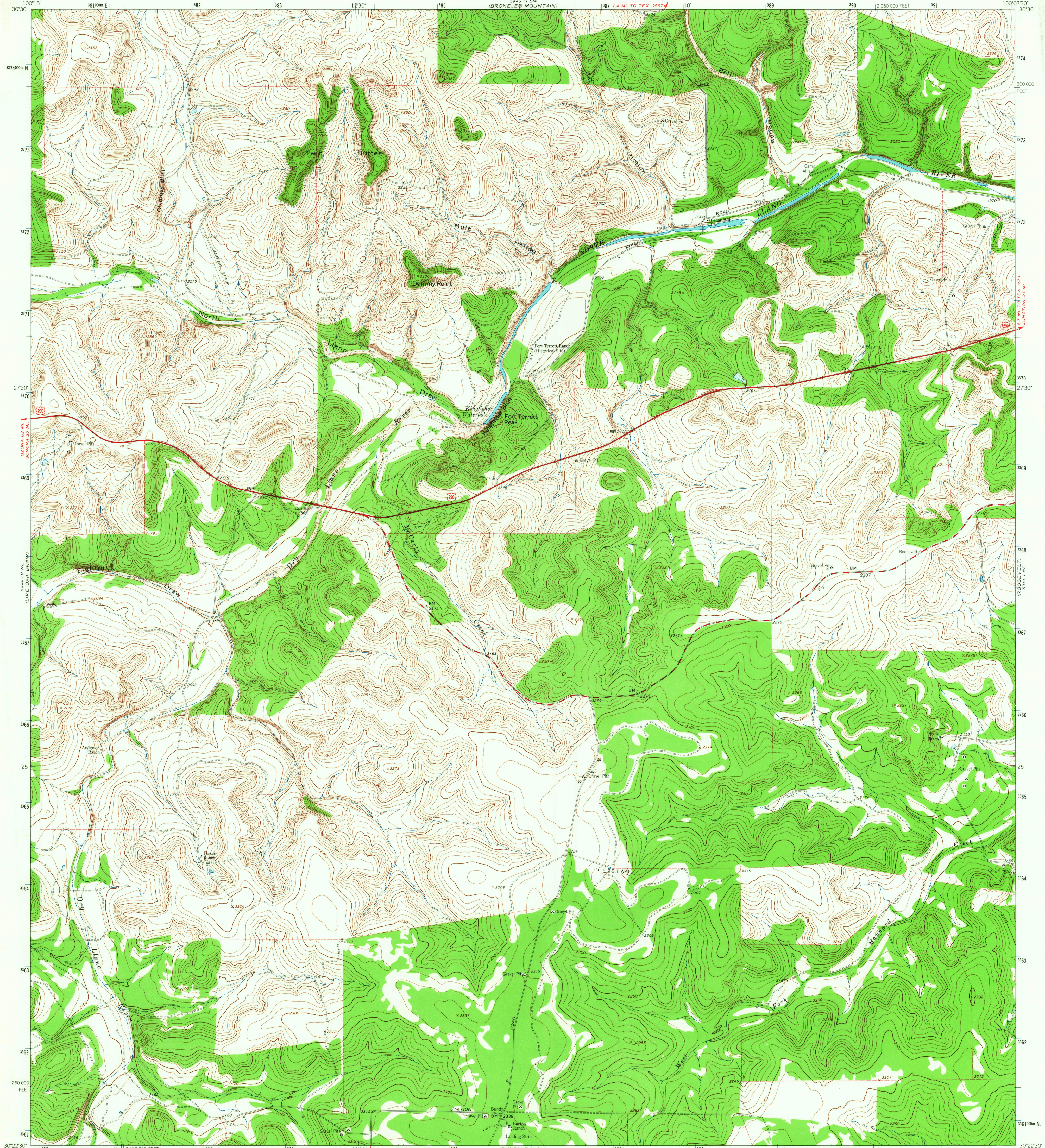


5945 I SE
BUFFALO WELL SE

UNITED STATES
DEPARTMENT OF THE INTERIOR
GEOLOGICAL SURVEY

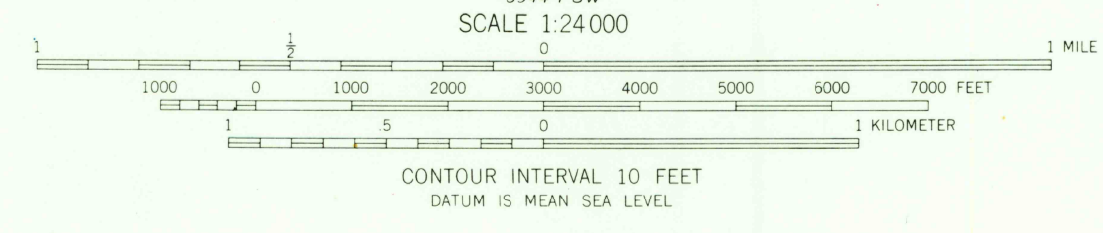
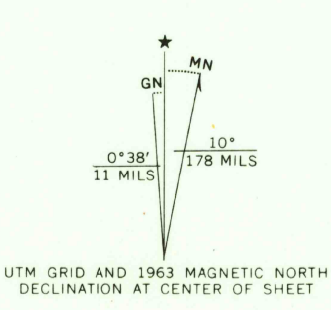
FORT TERRETT RANCH QUADRANGLE
TEXAS-SUTTON CO.
7.5 MINUTE SERIES (TOPOGRAPHIC)

5945 I SE
HMC PEGAN DRAW



5944 I SE
STEWART RANCH

Mapped, edited, and published by the Geological Survey
Control by USGS and USC&GS
Topography by photogrammetric methods from aerial
photographs taken 1962. Field checked 1963
Polyconic projection. 1927 North American datum.
10,000-foot grid ticks, on Texas coordinate system, central zone
1000-meter Universal Transverse Mercator grid ticks,
zone 14, shown in blue
Fine red dashed lines indicate selected fence and field lines



THIS MAP COMPLIES WITH NATIONAL MAP ACCURACY STANDARDS
FOR SALE BY U.S. GEOLOGICAL SURVEY, DENVER, COLORADO 80225, OR WASHINGTON, D.C. 20242
A FOLDER DESCRIBING TOPOGRAPHIC MAPS AND SYMBOLS IS AVAILABLE ON REQUEST



U.S.G.S.
FILE COPY
TOPOGRAPHIC DIVISION

ROAD CLASSIFICATION
Heavy-duty ——— Light-duty ———
Medium-duty ——— Unimproved dirt ———
U.S. Route ———
FORT TERRETT RANCH, TEX.
N3022.5-W10007.5/7.5
1963
AMS 5944 I NW-SERIES V882

2660
FEB 2 1966