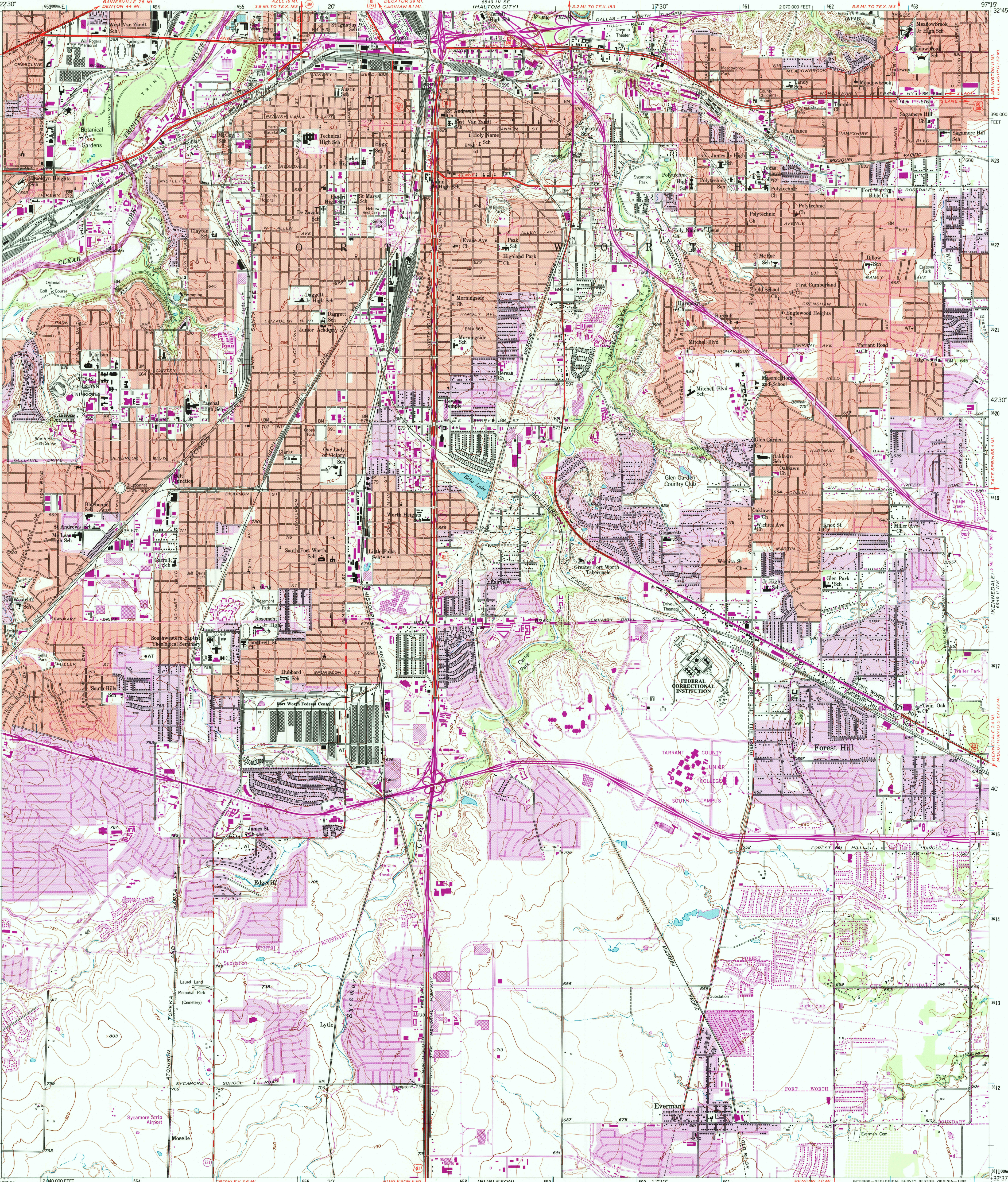




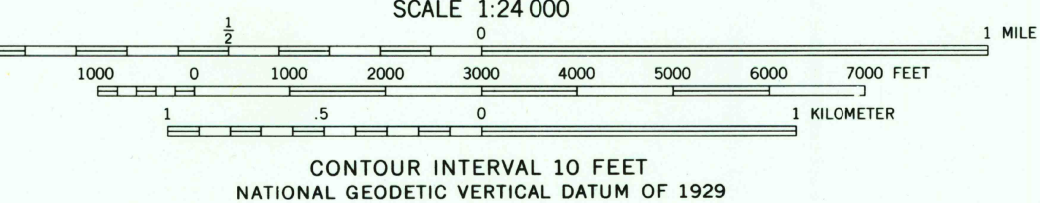
U.S. DEPARTMENT OF THE INTERIOR  
U.S. GEOLOGICAL SURVEY

FORT WORTH QUADRANGLE  
TEXAS-TARRANT CO.  
7.5 MINUTE SERIES (TOPOGRAPHIC)



Mapped, edited, and published by the Geological Survey  
Control by USGS and NOS/NOAA  
Topography by photogrammetric methods from aerial photographs  
taken 1952-1954. Field checked 1955  
Polyconic projection. 10,000-foot grid ticks based on Texas coordinate  
system, north central zone. 1000-meter Universal Transverse Mercator  
grid ticks, zone 14, shown in blue. 1927 North American Datum  
To place on the predicted North American Datum 1983 move the projection  
lines 10 meters south and 28 meters east as shown by dashed corner ticks  
Red tint indicates areas in which only landmark buildings are shown  
There may be private inholdings within the boundaries  
of the National or State reservations shown on this map

Revisions shown in purple and woodland compiled from  
aerial photographs taken 1979 and other sources. This  
information not field checked. Map edited 1981  
Purple tint indicates extension of urban areas



THIS MAP COMPLIES WITH NATIONAL MAP ACCURACY STANDARDS  
FOR SALE BY U.S. GEOLOGICAL SURVEY, P.O. BOX 25286, DENVER, COLORADO 80225  
A FOLDER DESCRIBING TOPOGRAPHIC MAPS AND SYMBOLS IS AVAILABLE ON REQUEST



RECEIVED

JUN 30 1999  
USGS NMD  
HISTORICAL MAP ARCHIVES

FORT WORTH, TEX.  
N3237 5-W9715/7 5

1955  
PHOTOREVISED 1981  
DMA 6549 III NE-SERIES V882

