

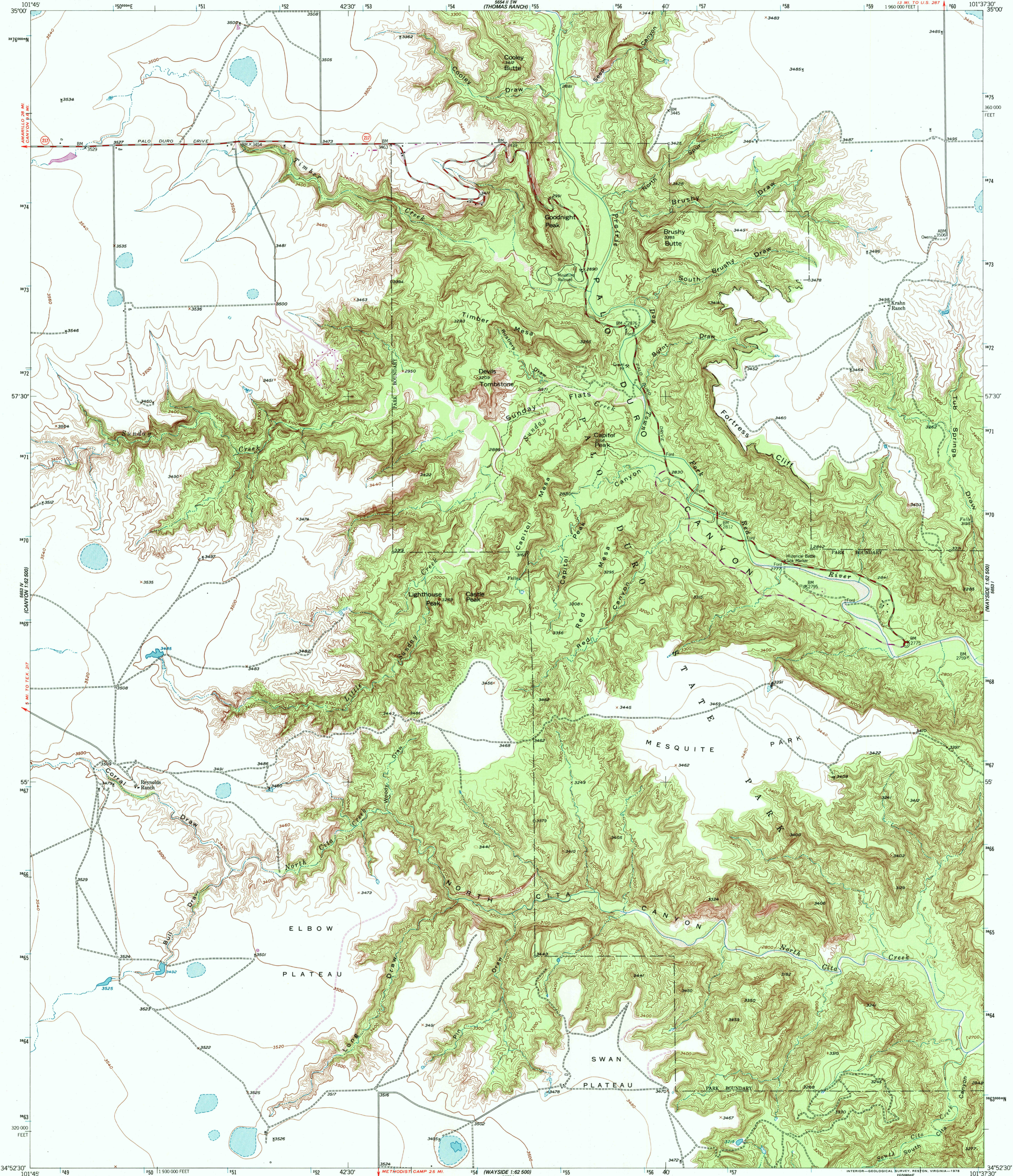
FOR SALE
(THE PAULSIDES)



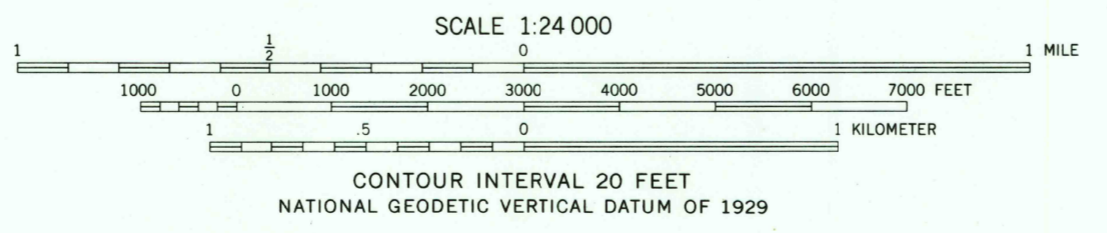
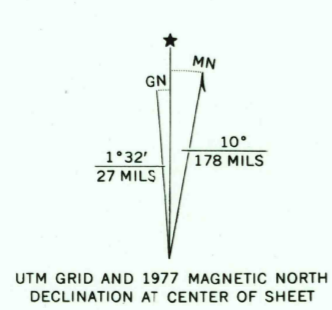
U.S. DEPARTMENT OF THE INTERIOR
U.S. GEOLOGICAL SURVEY

FORTRESS CLIFF QUADRANGLE
TEXAS—RANDALL CO
7.5 MINUTE SERIES (TOPOGRAPHIC)

FOR SALE
(THE PAULSIDES)



Mapped, edited, and published by the Geological Survey
Control by USGS and NOS/NOAA
Topography from aerial photographs by multiplex methods
and by planetable surveys 1956. Aerial photographs taken 1953
Polyconic projection. 1927 North American datum
10,000-foot grid based on Texas coordinate system,
north zone
1000-meter Universal Transverse Mercator grid ticks,
zone 14, shown in blue
Revisions shown in purple compiled from aerial photographs taken
1976. Map edited 1977. This information not field checked



ROAD CLASSIFICATION
Medium-duty ——— Light-duty - - - - -
Unimproved dirt - - - - -
State Route ○

RECEIVED
MAY 31 1999
USGS NMD
HISTORICAL MAP ARCHIVES

FORTRESS CLIFF, TEX
NW 4 WAYSIDE 15' QUADRANGLE
N3452.5—W10137.5/7.5
1956
PHOTOREVISED 1977
AMS 5653 1 NW—SERIES V882

THIS MAP COMPLIES WITH NATIONAL MAP ACCURACY STANDARDS
FOR SALE BY U.S. GEOLOGICAL SURVEY, P.O. BOX 25286, DENVER, COLORADO 80225
A FOLDER DESCRIBING TOPOGRAPHIC MAPS AND SYMBOLS IS AVAILABLE ON REQUEST

