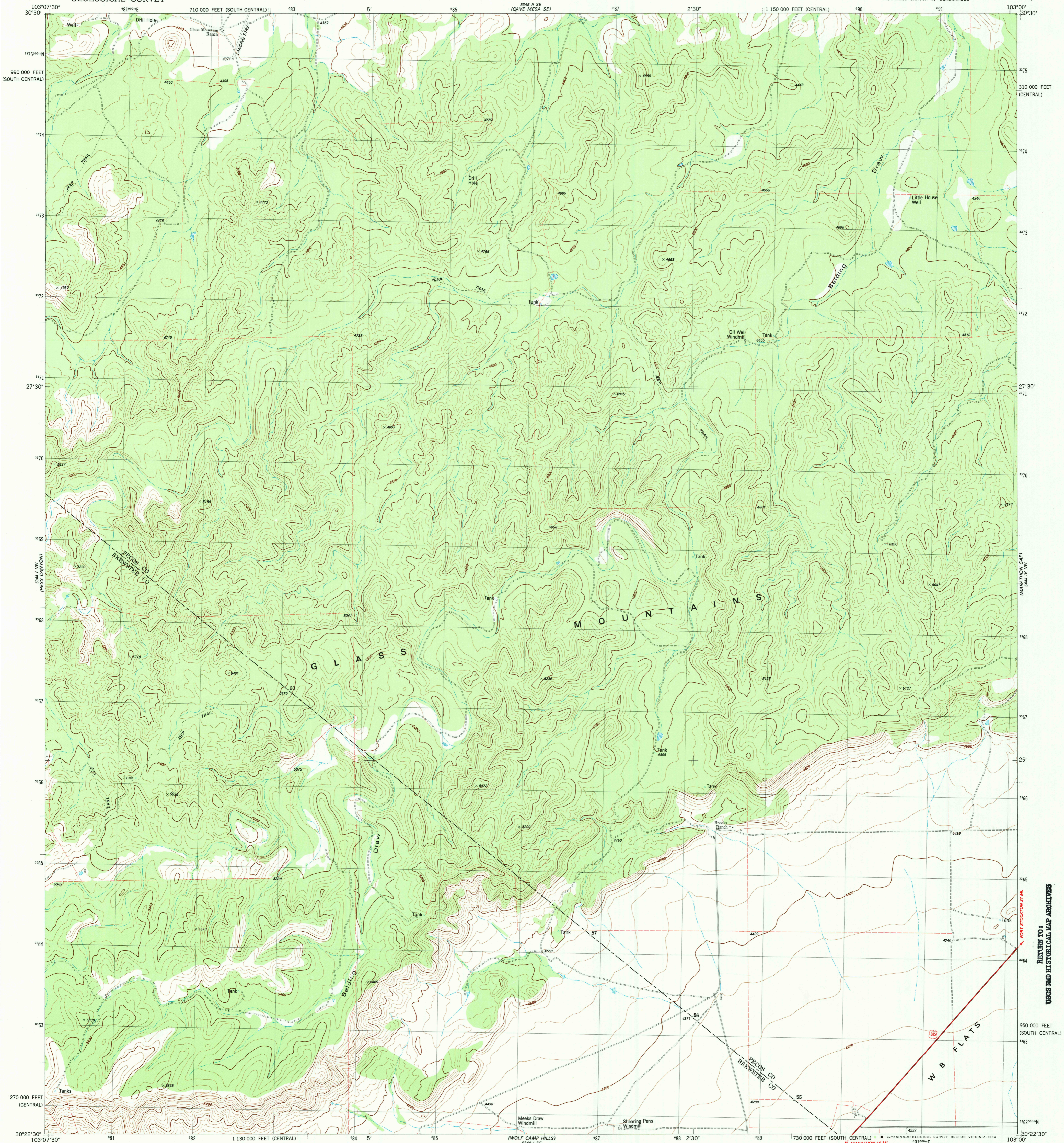


Sheet 254
(Cave Mesa)

Sheet 254
(Cave Mesa)



Mapped, edited, and published by the Geological Survey

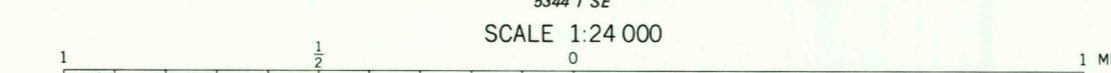
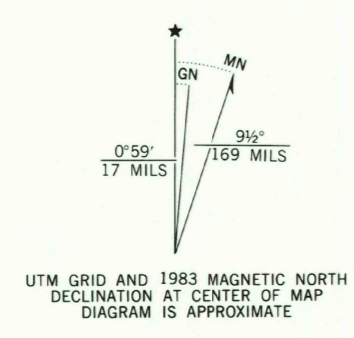
Control by USGS and NOS/NOAA

Topography by photogrammetric methods from aerial photographs taken 1975. Field checked 1977. Map edited 1983

Projection: Texas coordinate system, central zone (Lambert conformal conic)
10,000-foot grid ticks based on Texas coordinate system central and south central zones

1000-meter Universal Transverse Mercator grid, zone 13
1927 North American Datum
To place on the predicted North American Datum 1983
move the projection lines 15 meters south and
42 meters east; as shown by dashed corner ticks

Fine red dashed lines indicate selected fence lines



SCALE 1:24 000
CONTOUR INTERVAL 40 FEET
NATIONAL GEODETIC VERTICAL DATUM OF 1929



ROAD CLASSIFICATION

Primary highway, hard surface	Light-duty road, hard or improved surface
Secondary highway, hard surface	Unimproved road
Interstate Route	U. S. Route
	State Route

GLASS MOUNTAIN RANCH, TEX.
NE 4 HESS CANYON 15' QUADRANGLE
N3022.5-W10300/7.5

THIS MAP COMPLIES WITH NATIONAL MAP ACCURACY STANDARDS
FOR SALE BY U. S. GEOLOGICAL SURVEY, DENVER, COLORADO 80225, OR RESTON, VIRGINIA 22092
A FOLDER DESCRIBING TOPOGRAPHIC MAPS AND SYMBOLS IS AVAILABLE ON REQUEST

3003-144

1983

DMA 5344 I NE-SERIES V882

RETURN TO:
USGS AND HISTORICAL MAP ARCHIVES