

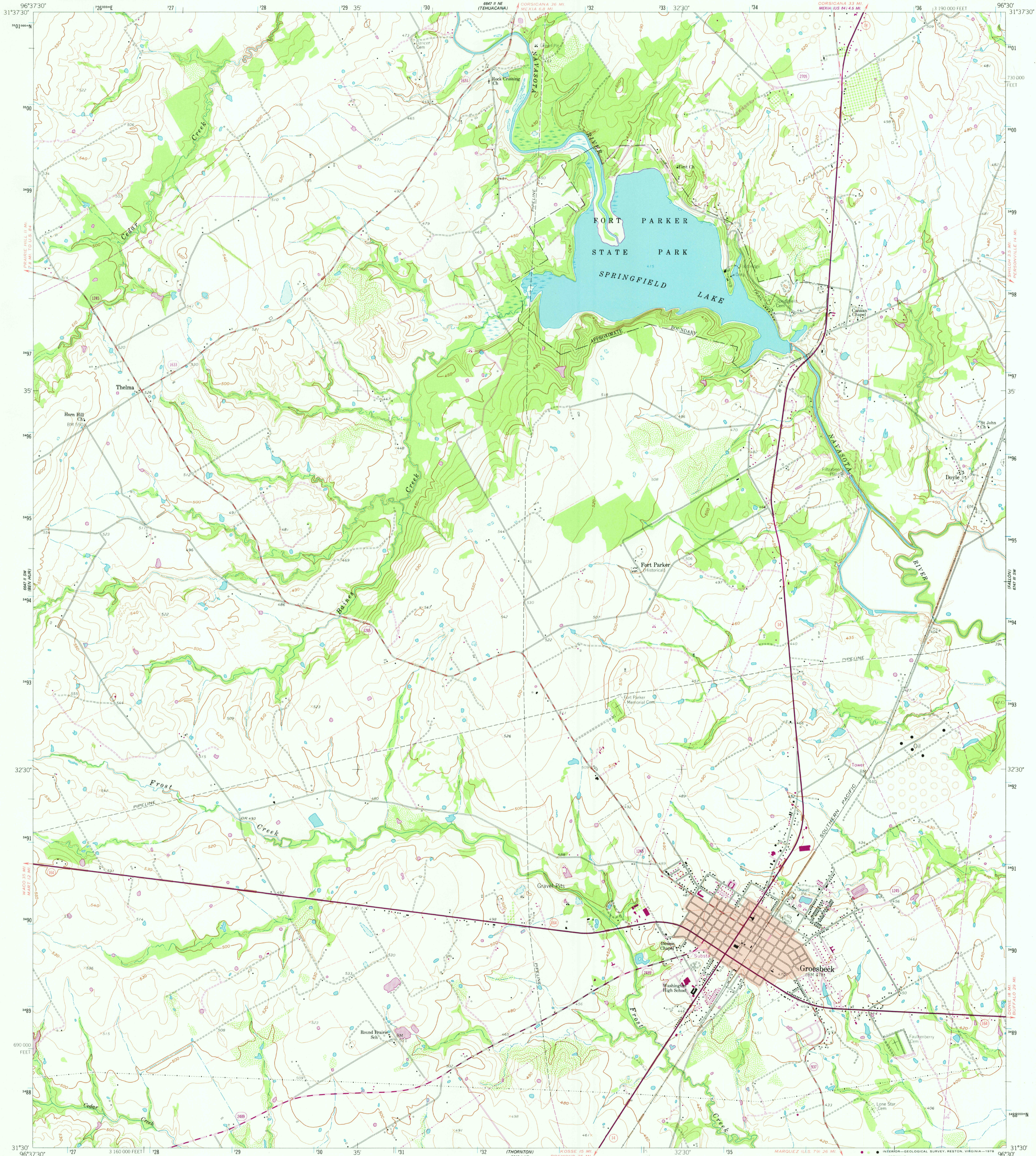
667 P. SW  
REV. 10/78

UNITED STATES  
DEPARTMENT OF THE INTERIOR  
GEOLOGICAL SURVEY

STATE OF TEXAS  
BOARD OF WATER ENGINEERS

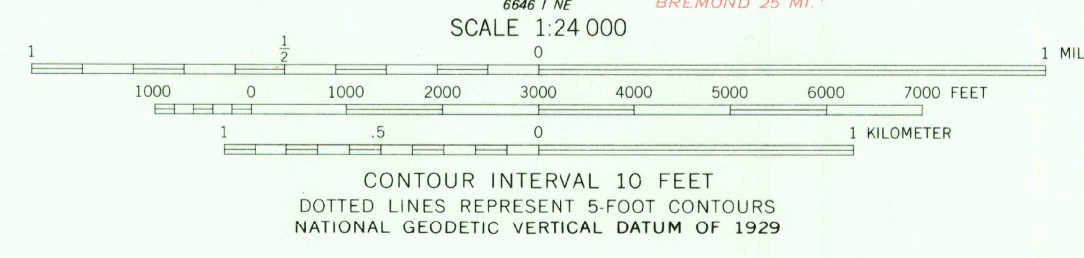
GROESBECK QUADRANGLE  
TEXAS-LIMESTONE CO.  
7.5 MINUTE SERIES (TOPOGRAPHIC)

667 P. NW  
REV. 10/78

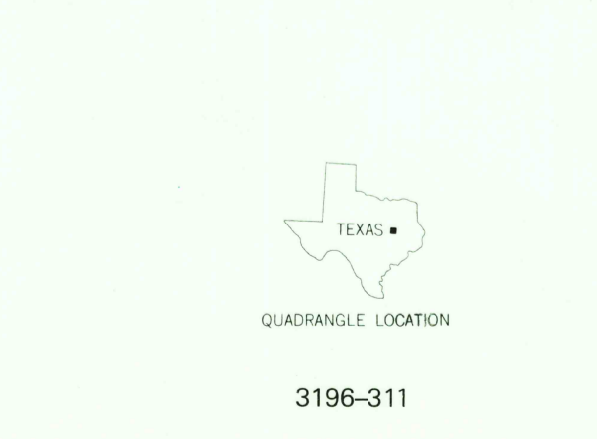


Mapped, edited, and published by the Geological Survey  
Control by USGS and USC&GS  
Topography from aerial photographs by photogrammetric methods  
Aerial photographs taken 1958. Field check 1960  
Polyconic projection. 1927 North American datum  
10,000-foot grid based on Texas coordinate system,  
central zone  
1000 meter Universal Transverse Mercator grid ticks,  
zone 14, shown in blue  
Fine red dashed lines indicate selected fence and field lines  
where generally visible on aerial photographs  
This information is unchecked  
Red tint indicates areas in which only  
landmark buildings are shown

Revision shown in purple compiled from aerial photographs  
taken 1976 and other source data. This information not  
field checked. Map edited 1978



CONTOUR INTERVAL 10 FEET  
DOTTED LINES REPRESENT 5 FOOT CONTOURS  
NATIONAL GEODETIC VERTICAL DATUM OF 1929  
THIS MAP COMPLIES WITH NATIONAL MAP ACCURACY STANDARDS  
FOR SALE BY U. S. GEOLOGICAL SURVEY, DENVER, COLORADO 80225, OR RESTON, VIRGINIA 22092  
A FOLDER DESCRIBING TOPOGRAPHIC MAPS AND SYMBOLS IS AVAILABLE ON REQUEST



ROAD CLASSIFICATION  
Primary highway, all weather, hard surface  
Secondary highway, all weather, hard surface  
Light-duty road, all weather, improved surface  
Unimproved road, fair or dry weather  
Interstate Route U.S. Route State Route  
USGS Historical File Topographic Division  
GROESBECK, TEX.  
N3130-W9630/7.5  
1960  
PHOTOREVISED 1978  
AMS 6647 II SE-SERIES V882

SEP 14 1978

2950

3196-311