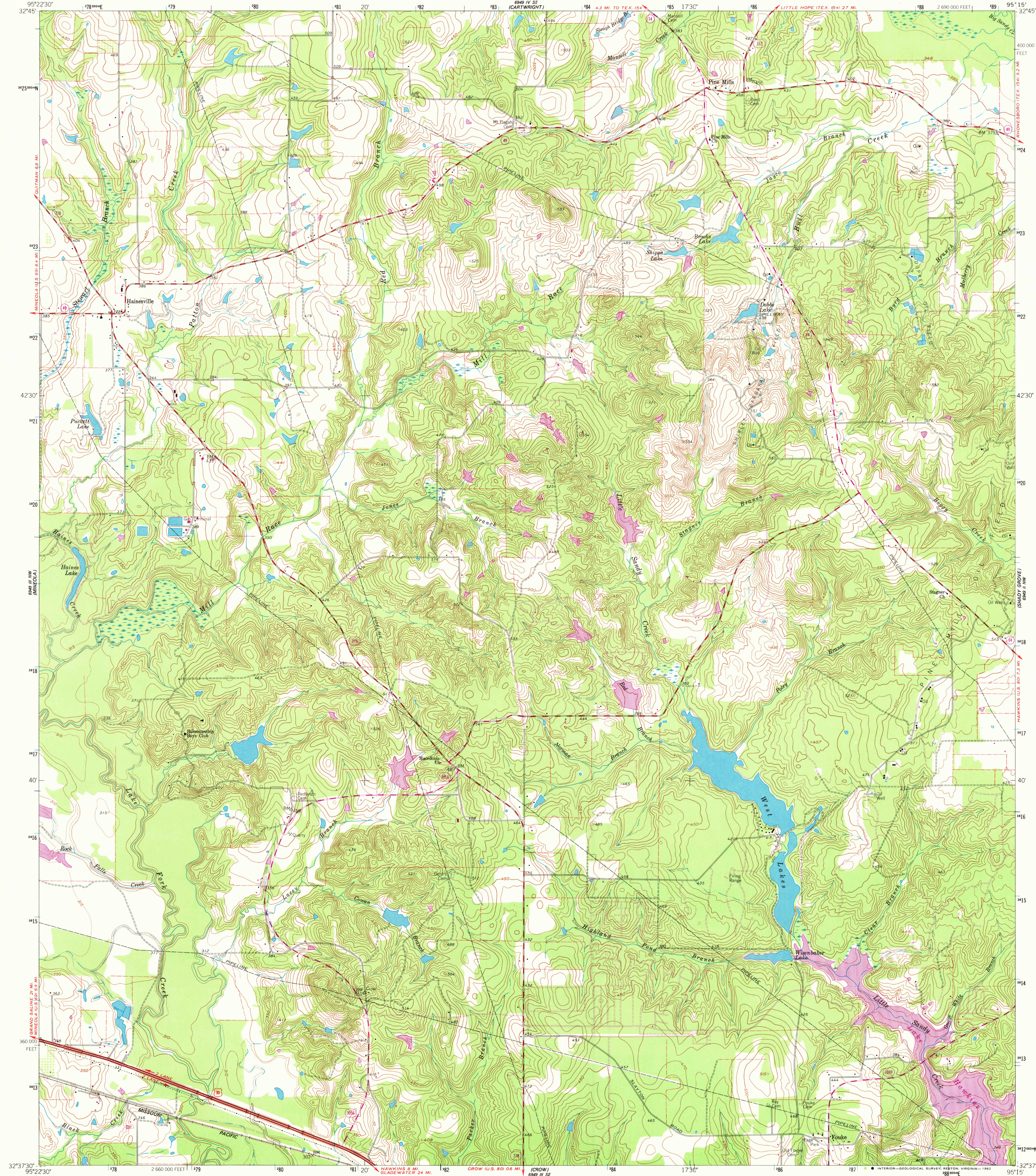


6949 IV SW
(MINEOLA)

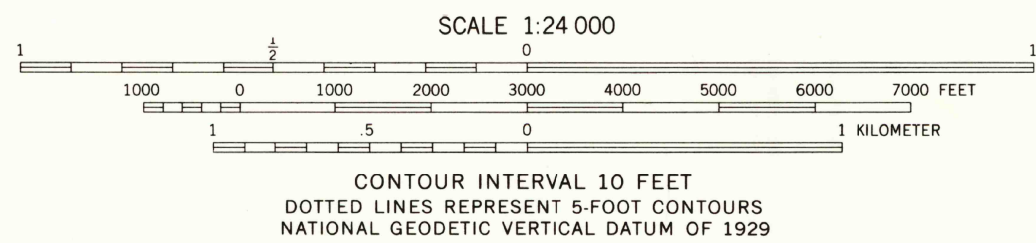
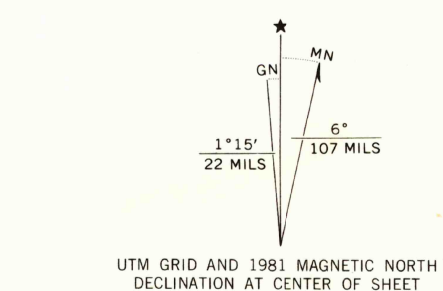
UNITED STATES
DEPARTMENT OF THE INTERIOR
GEOLOGICAL SURVEY

HAINESVILLE QUADRANGLE
TEXAS—WOOD CO.
7.5 MINUTE SERIES (TOPOGRAPHIC)

6949 IV SW
(HAINESVILLE)



Maped, edited, and published by the Geological Survey
Control by USGS and NOS/NOAA
Topography by photogrammetric methods from aerial
photographs taken 1957-1958. Field checked 1960
Polyconic projection. 1927 North American datum
10,000-foot grid based on Texas coordinate system,
north central zone
1000-meter Universal Transverse Mercator grid ticks,
zone 15, shown in blue
Fine red dashed lines indicate selected fence and field lines
where generally visible on aerial photographs
This information is unchecked
To place on the predicted North American Datum 1983,
move the projection lines 11 meters south and
22 meters east as shown by dashed corner ticks



THIS MAP COMPLIES WITH NATIONAL MAP ACCURACY STANDARDS
FOR SALE BY U.S. GEOLOGICAL SURVEY, DENVER, COLORADO 80225, OR RESTON, VIRGINIA 22092
A FOLDER DESCRIBING TOPOGRAPHIC MAPS AND SYMBOLS IS AVAILABLE ON REQUEST



QUADRANGLE LOCATION

3295-424

ROAD CLASSIFICATION
Heavy-duty ——— Light-duty ———
Medium-duty ——— Unimproved dirt ———
U.S. Route
State Route

HAINESVILLE, TEX.
N3237.5—W9515.75

1960
PHOTOREVISED 1981
DMA 6949 III NE-SERIES V882

RETURN TO:
USGS AND HISTORICAL MAP ARCHIVES

FEB 4 1982

1982