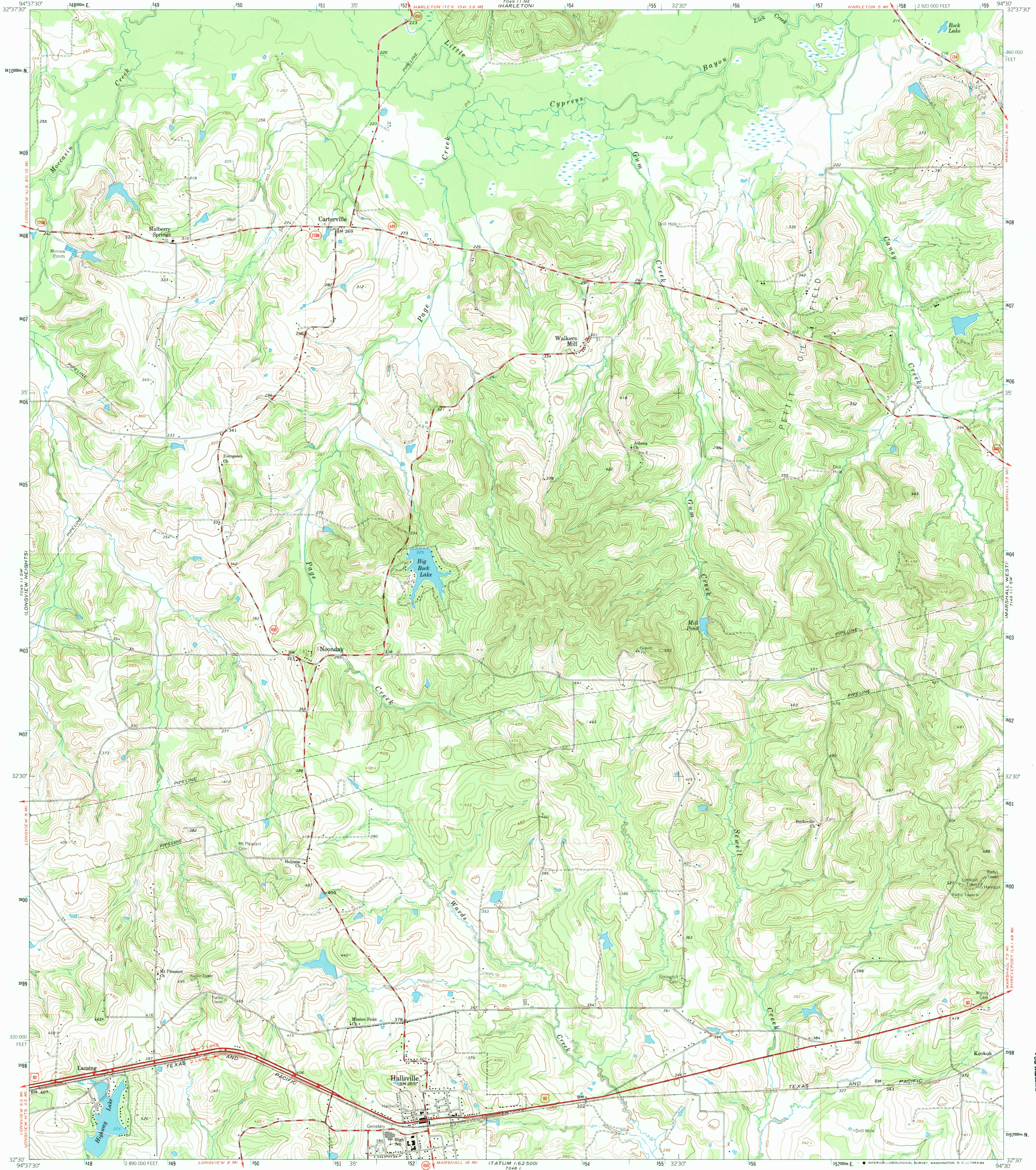


749 11 W
(ASHLAND)

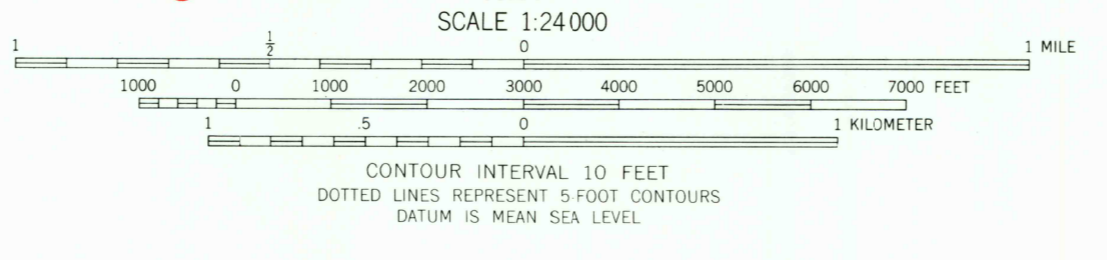
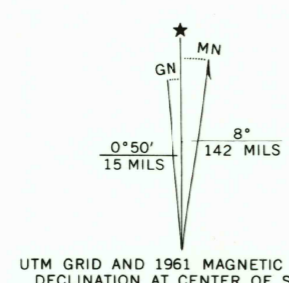
UNITED STATES
DEPARTMENT OF THE INTERIOR
GEOLOGICAL SURVEY

HALLSVILLE QUADRANGLE
TEXAS-HARRISON CO.
7.5 MINUTE SERIES (TOPOGRAPHIC)

749 11 W
(MARSHALL NW)



Mapped, edited, and published by the Geological Survey
Control by USGS and USC&GS
Topography by photogrammetric methods from aerial
photographs taken 1957. Field checked 1961
Polyconic projection. 1927 North American datum
10,000-foot grid based on Texas coordinate system, north central zone
1000 meter Universal Transverse Mercator grid ticks,
zone 15, shown in blue
Fine red dashed lines indicate selected fence lines



ROAD CLASSIFICATION	
Heavy-duty	Light-duty
Medium-duty	Unimproved dirt
U.S. Route	State Route

HALLSVILLE, TEX.
N3230-W9430/7.5

1961

AMS 7049 11 SE-SERIES V882

THIS MAP COMPLIES WITH NATIONAL MAP ACCURACY STANDARDS
FOR SALE BY U.S. GEOLOGICAL SURVEY, DENVER 25, COLORADO OR WASHINGTON 25, D.C.
A FOLDER DESCRIBING TOPOGRAPHIC MAPS AND SYMBOLS IS AVAILABLE ON REQUEST

RETURN TO:
USGS AND HISTORICAL MAP ARCHIVES

749 11 W
(749 11 W)

749 11 W
(749 11 W)