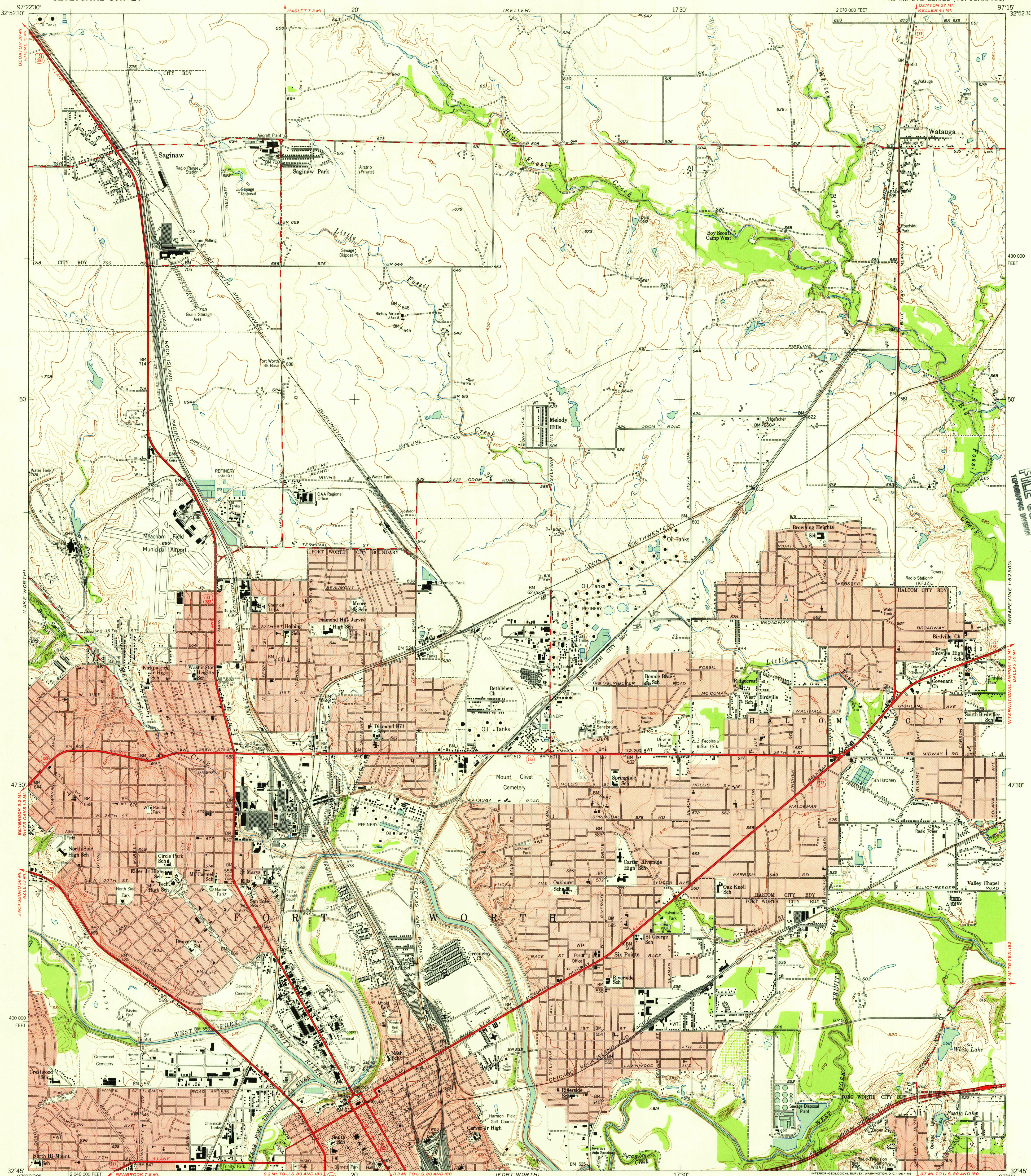


(AVONDALE)

UNITED STATES
DEPARTMENT OF THE INTERIOR
GEOLOGICAL SURVEY

HALTOM CITY QUADRANGLE
TEXAS-TARRANT CO.
7.5 MINUTE SERIES (TOPOGRAPHIC)

(GRAPEVINE)
1:62,500



USGS
FILE COPY
TOPOGRAPHIC DIVISION

(GRAPEVINE) 1:62,500

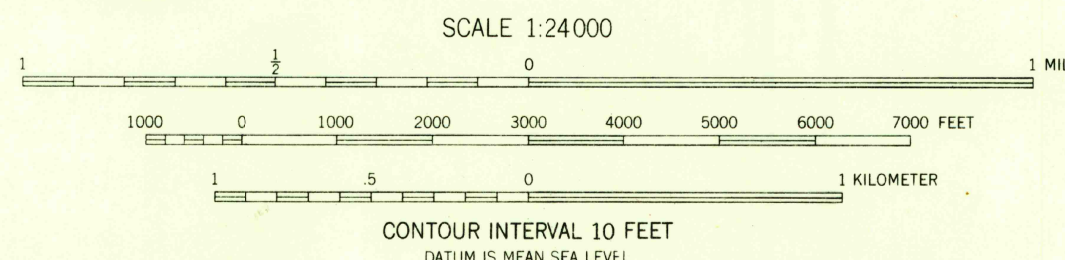
(INTERNATIONAL) DALLAS 30 MI

4 MI TO TEX. 83

4 MI TO TEX. 83

Maped, edited, and published by the Geological Survey
Control by USGS and USC&GS
Topography from aerial photographs by Kelsh plotter
Aerial photographs taken 1952-1954. Field check 1955
Polyconic projection. 1927 North American datum.
10,000-foot grid based on Texas coordinate system,
north central zone.
Red tint indicates areas in which only
landmark buildings are shown

APPROXIMATE MEAN
DECLINATION, 1955



USGS
Historical File
Topographic Division



QUADRANGLE LOCATION

U.S.G.S.
FILE COPY
TOPOGRAPHIC DIVISION

ROAD CLASSIFICATION
Heavy-duty ——— Light-duty ———
Medium-duty ——— Unimproved dirt ———
U. S. Route ——— State Route ———

HALTOM CITY, TEX.
N3245-W9715/7.5
1955

THIS MAP COMPLIES WITH NATIONAL MAP ACCURACY STANDARDS
FOR SALE BY U.S. GEOLOGICAL SURVEY, DENVER 2, COLORADO OR WASHINGTON 25, D.C.
A FOLDER DESCRIBING TOPOGRAPHIC MAPS AND SYMBOLS IS AVAILABLE ON REQUEST

3700