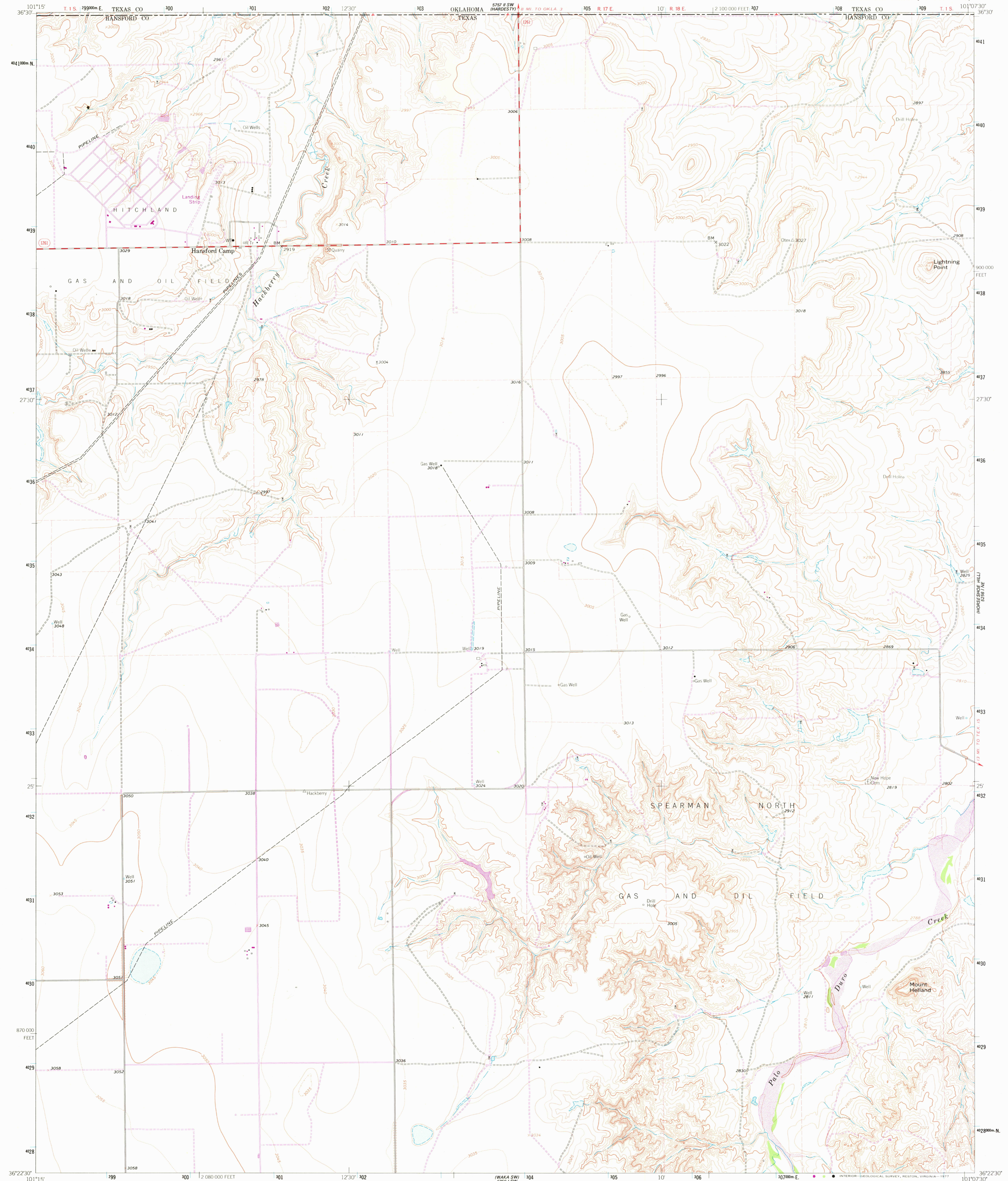


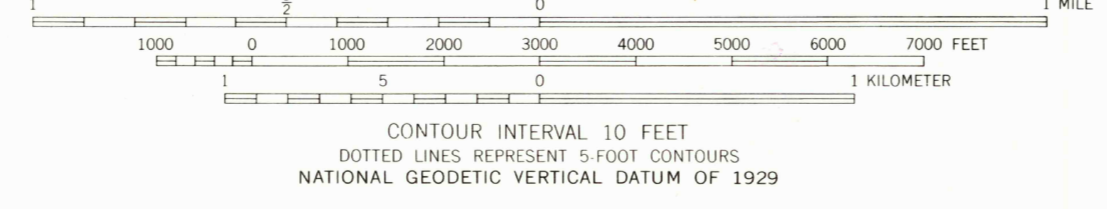
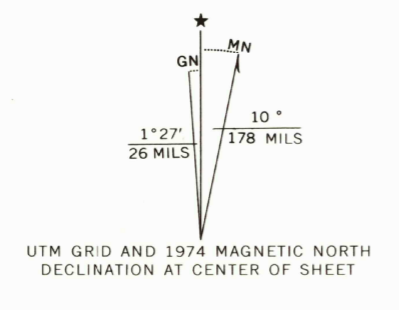
572 1/2 SE
600000m N

572 1/2 SE
600000m N



Mapped, edited, and published by the Geological Survey

Control by USGS and USC&GS
Topography by photogrammetric methods from aerial photographs taken 1962 and planetable surveys 1962
Polyconic projection. 1927 North American datum
10,000-foot grid based on Texas coordinate system, north zone
1000 meter Universal Transverse Mercator grid ticks, zone 14, shown in blue
Fine red dashed lines indicate selected fence lines
Revisions shown in purple compiled from aerial photographs taken 1974. This information not field checked



ROAD CLASSIFICATION
Medium-duty ——— Light-duty ———
Unimproved dirt - - - - -

THIS MAP COMPLIES WITH NATIONAL MAP ACCURACY STANDARDS
FOR SALE BY U. S. GEOLOGICAL SURVEY, DENVER, COLORADO 80225, OR RESTON, VIRGINIA 22092
AND BY THE OKLAHOMA GEOLOGICAL SURVEY, NORMAN, OKLAHOMA 73069
A FOLDER DESCRIBING TOPOGRAPHIC MAPS AND SYMBOLS IS AVAILABLE ON REQUEST

3601-143

USGS
Historical File
Topographic Division

HANSFORD CAMP, TEX.-OKLA.
N3622.5-W10107.5/7.5
1962
PHOTOREVISED 1974
AMS 5756 1 NW-SERIES V882

FEB 17 1978

2,400