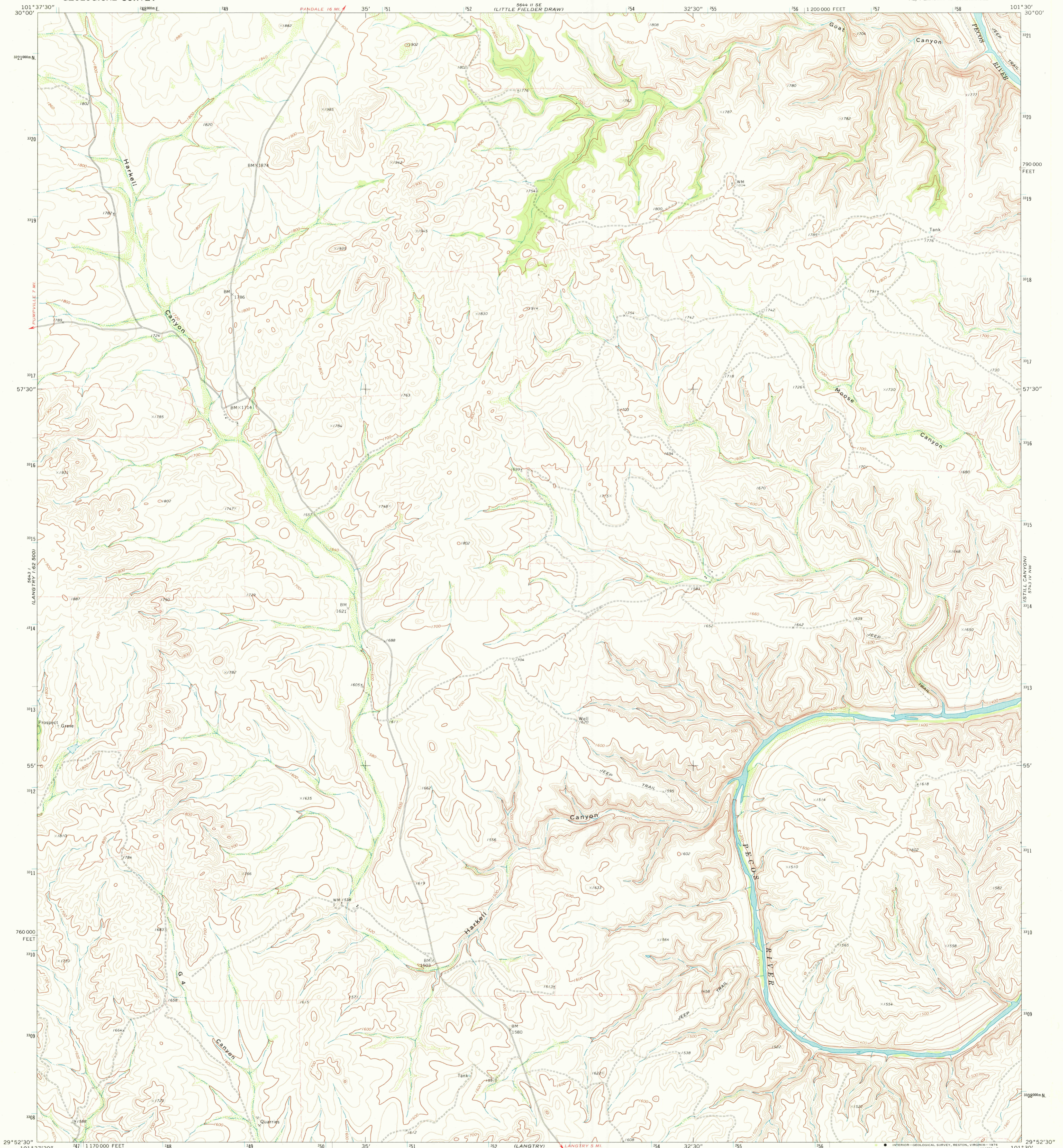
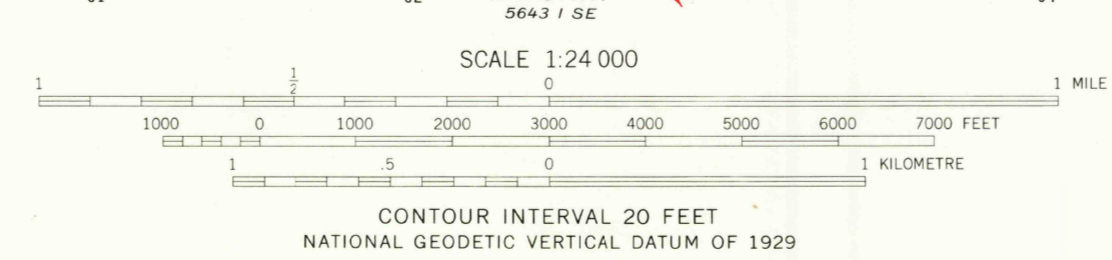
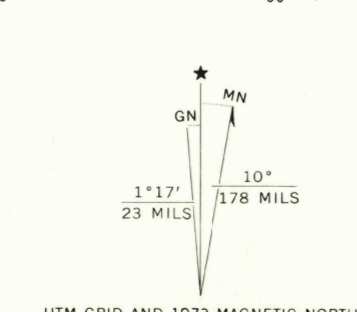


5643
LANGTRY 15
NE/4 SW
CANYON



Mapped, edited, and published by the Geological Survey
Control by USGS and NOS/NOAA
Topography by photogrammetric methods from aerial
photographs taken 1971. Field checked 1973
Projection and 10,000-foot grid ticks: Texas
coordinate system, south central zone (Lambert conformal conic)
1000-metre Universal Transverse Mercator grid ticks
zone 14, shown in blue. 1927 North American datum
Fine red dashed lines indicate selected fence lines



ROAD CLASSIFICATION		
Primary highway, hard surface	Light-duty road, hard or improved surface	
Secondary highway, hard surface	Unimproved road	
Interstate Route	U. S. Route	State Route

THIS MAP COMPLIES WITH NATIONAL MAP ACCURACY STANDARDS
FOR SALE BY U.S. GEOLOGICAL SURVEY, DENVER, COLORADO 80225, OR RESTON, VIRGINIA 22092
A FOLDER DESCRIBING TOPOGRAPHIC MAPS AND SYMBOLS IS AVAILABLE ON REQUEST