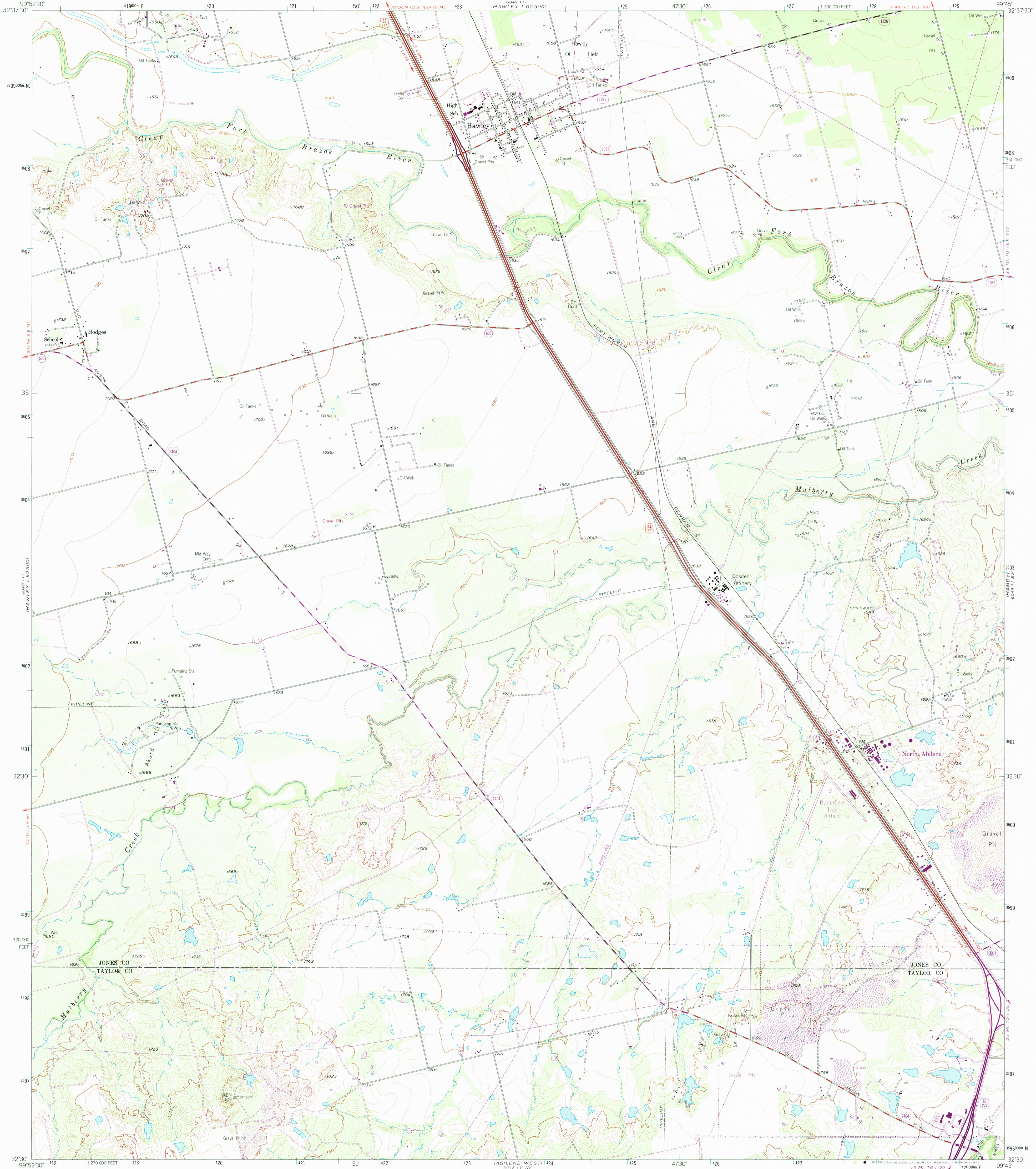


6049 111
HAWLEY 1:62 500

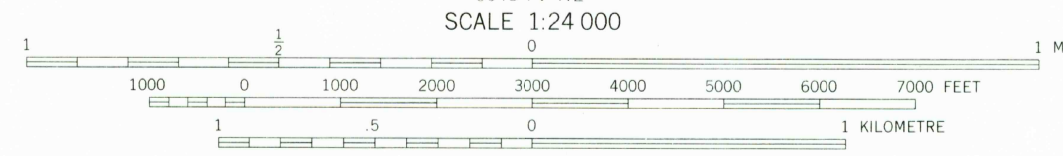
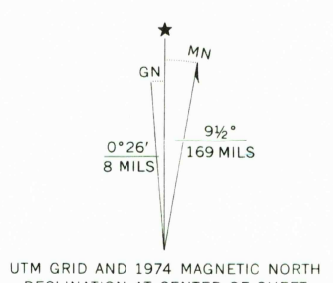
UNITED STATES
DEPARTMENT OF THE INTERIOR
GEOLOGICAL SURVEY

HAWLEY QUADRANGLE
TEXAS
7.5 MINUTE SERIES (TOPOGRAPHIC)
SE/4 HAWLEY 15 QUADRANGLE



6049 111
HAWLEY 1:62 500

Maped, edited, and published by the Geological Survey
Control by USGS and NOS/NOAA
Topography from aerial photographs by ER-55 plotter
Aerial photographs taken 1954. Field check 1957
Polyconic projection. 1927 North American datum
10,000-foot grid based on Texas coordinate system,
north central zone
1000 metre Universal Transverse Mercator grid ticks,
zone 14, shown in blue
Revisions shown in purple compiled from aerial photographs taken
1967 and 1974. This information not field checked



CONTOUR INTERVAL 10 FEET
NATIONAL GEODETIC VERTICAL DATUM OF 1929



ROAD CLASSIFICATION

Primary highway, hard surface	Light-duty road, hard or improved surface
Secondary highway, hard surface	Unimproved road
Interstate Route	U. S. Route
	State Route

USGS
HISTORICAL FILE
TOPOGRAPHIC DIVISION

HAWLEY, TEX.
SE/4 HAWLEY 15 QUADRANGLE
N3230—W9945/7.5
1957
PHOTOREVISED 1967 AND 1974
AMS 6049 111 SE—SERIES V882

JUN 06 1975
3285

THIS MAP COMPLIES WITH NATIONAL MAP ACCURACY STANDARDS
FOR SALE BY U. S. GEOLOGICAL SURVEY, DENVER, COLORADO 80225, OR RESTON, VIRGINIA 22092
A FOLDER DESCRIBING TOPOGRAPHIC MAPS AND SYMBOLS IS AVAILABLE ON REQUEST