

6743 I SE
HEMPSTEAD

6743 I NE
(SUNNY SIDE)

6743 I SE
6743 I SE



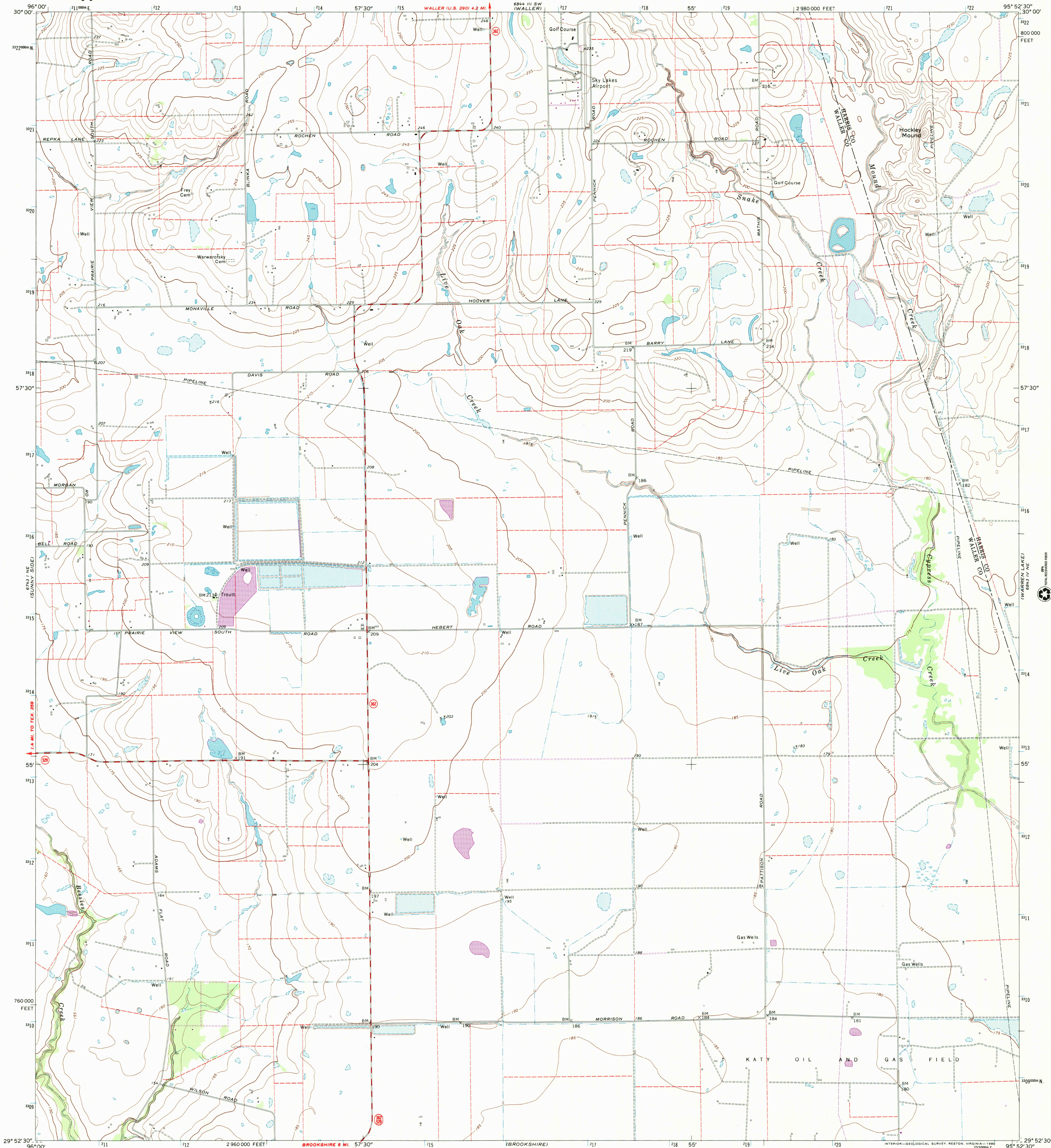
U.S. DEPARTMENT OF THE INTERIOR
U.S. GEOLOGICAL SURVEY

HOCKLEY MOUND QUADRANGLE
TEXAS
7.5 MINUTE SERIES (TOPOGRAPHIC)

6743 I SE
HOCKLEY

6743 I SE
HOCKLEY

6743 I SE
HOCKLEY



Mapped, edited, and published by the Geological Survey

Control by USGS and NOS/NOAA

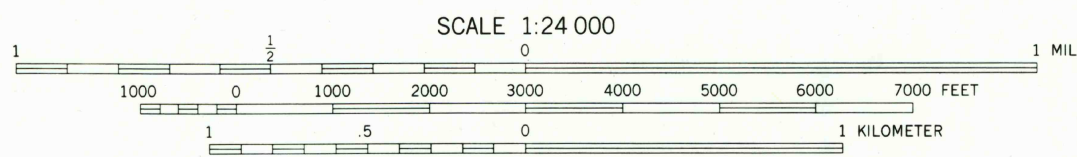
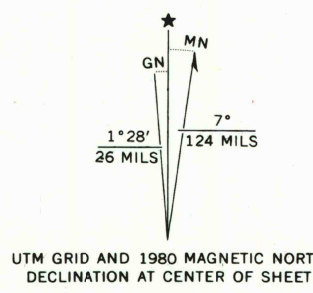
Planimetry by photogrammetric methods from aerial photographs taken 1970. Topography enlarged from 1:62,500-scale map of Brookshire quadrangle dated 1955. Topography by planetable surveys. Field checked 1971

Projection and 10,000-foot grid ticks: Texas coordinate system, south central zone (Lambert conformal conic) 1000-meter Universal Transverse Mercator grid ticks, zone 15, shown in blue. 1927 North American datum

Fine red dashed lines indicate selected fence lines

To place on the predicted North American Datum 1983 move the projection lines 20 meters south and 23 meters east as shown by dashed corner ticks

Revisions shown in purple compiled from aerial photographs taken 1977 and other source data. This information not field checked. Map edited 1980



CONTOUR INTERVAL 5 FEET
NATIONAL GEODETIC VERTICAL DATUM OF 1929

THIS MAP COMPLIES WITH NATIONAL MAP ACCURACY STANDARDS
FOR SALE BY U.S. GEOLOGICAL SURVEY, P.O. BOX 25286, DENVER, COLORADO 80225
A FOLDER DESCRIBING TOPOGRAPHIC MAPS AND SYMBOLS IS AVAILABLE ON REQUEST



2995-333

RECEIVED
APR 30 2001

U.S. GEOLOGICAL SURVEY
HISTORICAL MAP ARCHIVES

ROAD CLASSIFICATION

Primary highway, hard surface
Secondary highway, hard surface
Unimproved road
Interstate Route
U.S. Route
State Route

HOCKLEY MOUND, TEX.

N2952.5-W9552.5/7.5

1971
PHOTOREVISED 1980
DMA 6843 IV NW-SERIES V882

