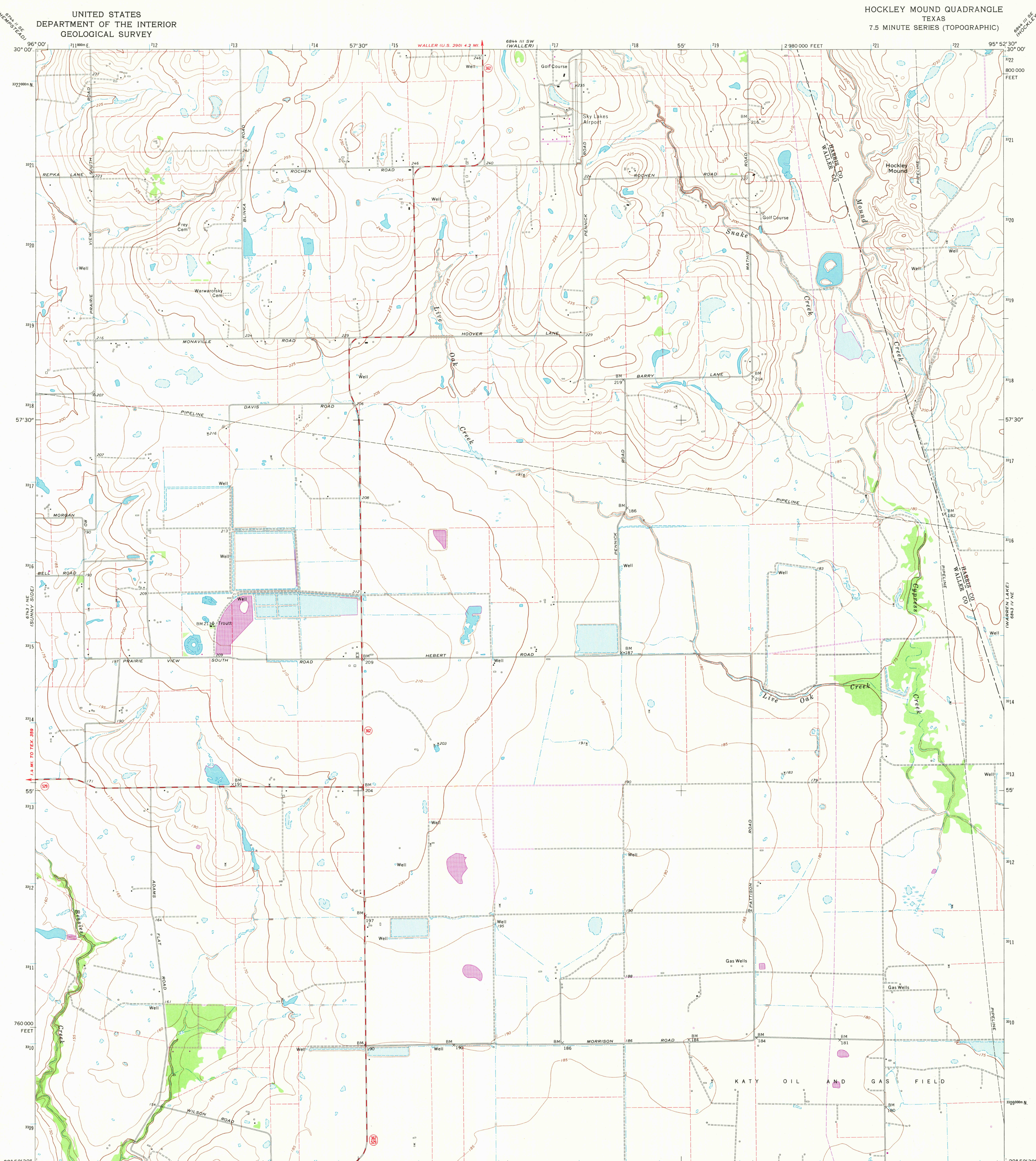
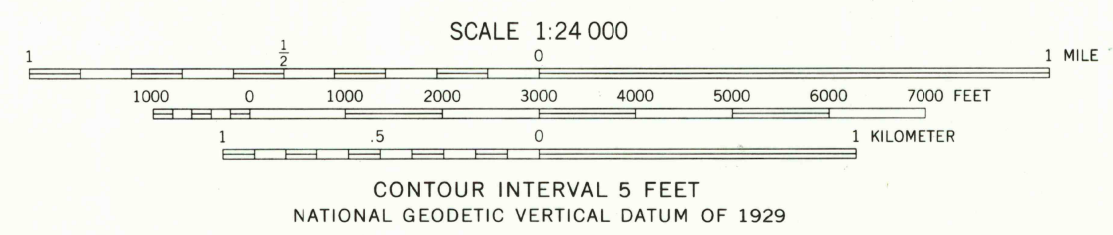


UNITED STATES  
DEPARTMENT OF THE INTERIOR  
GEOLOGICAL SURVEY

HOCKLEY MOUND QUADRANGLE  
TEXAS  
7.5 MINUTE SERIES (TOPOGRAPHIC)



Mapped, edited, and published by the Geological Survey  
Control by USGS and NOS/NOAA  
Planimetry by photogrammetric methods from aerial  
photographs taken 1970. Topography enlarged from 1:62,500-scale  
map of Brookshire quadrangle dated 1955. Topography by  
planimetric surveys. Field checked 1971  
Projection and 10,000-foot grid ticks: Texas coordinate  
system, south central zone (Lambert conformal conic)  
1000-meter Universal Transverse Mercator grid ticks,  
zone 15, shown in blue. 1927 North American datum  
Fine red dashed lines indicate selected fence lines  
To place on the predicted North American Datum 1983  
move the projection lines 20 meters south and  
23 meters east as shown by dashed corner ticks



ROAD CLASSIFICATION  
Primary highway, hard surface ——— Light duty road, hard or improved surface ———  
Secondary highway, hard surface ——— Unimproved road ———  
Interstate Route — U.S. Route — State Route



THIS MAP COMPLIES WITH NATIONAL MAP ACCURACY STANDARDS  
FOR SALE BY U.S. GEOLOGICAL SURVEY, DENVER, COLORADO 80225, OR RESTON, VIRGINIA 22092  
A FOLDER DESCRIBING TOPOGRAPHIC MAPS AND SYMBOLS IS AVAILABLE ON REQUEST

2995-333

HOCKLEY MOUND, TEX.  
N2952.5-W9552.5/7.5  
1971  
PHOTOREVISED 1980  
DMA 6843 IV NW-SERIES Y882

2000