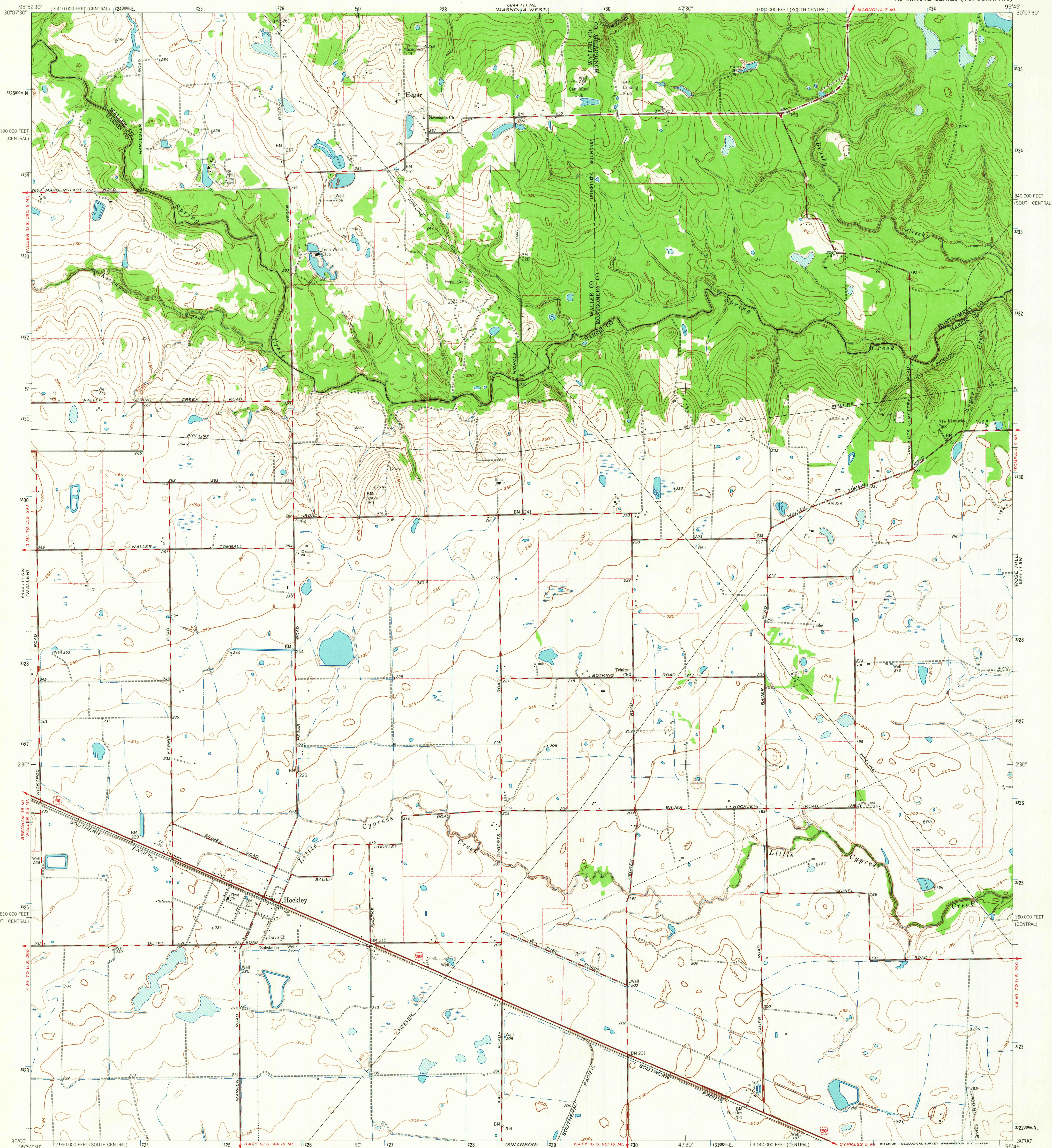


UNITED STATES
DEPARTMENT OF THE INTERIOR
GEOLOGICAL SURVEY

HOCKLEY QUADRANGLE
TEXAS
7.5 MINUTE SERIES (TOPOGRAPHIC)



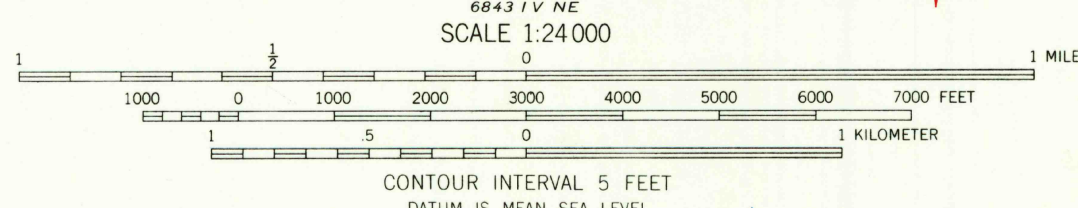
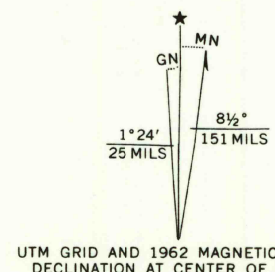
Mapped, edited, and published by the Geological Survey
in cooperation with Texas Water Commission

Control by USGS and USC&GS

Planimetry by photogrammetric methods from aerial photographs
taken 1957. Topography by planetable surveys 1962

Polycyclic projection. 1927 North American datum
10,000-foot grid based on Texas coordinate system,
south central and central zones
1000-meter Universal Transverse Mercator grid ticks,
zone 15, shown in blue

Fine red dashed lines indicate selected fence lines



USGS
Historical File
Topographic Division



Heavy-duty ——— Light-duty ———
Medium-duty ——— Unimproved dirt ———
U.S. Route

HOCKLEY, TEX.

N3000-W9545/7.5

1962

AMS 6844 111 SE-SERIES V882

THIS MAP COMPLIES WITH NATIONAL MAP ACCURACY STANDARDS
FOR SALE BY U.S. GEOLOGICAL SURVEY, DENVER 25, COLORADO OR WASHINGTON 25, D.C.
A FOLDER DESCRIBING TOPOGRAPHIC MAPS AND SYMBOLS IS AVAILABLE ON REQUEST

MAY 25 1964