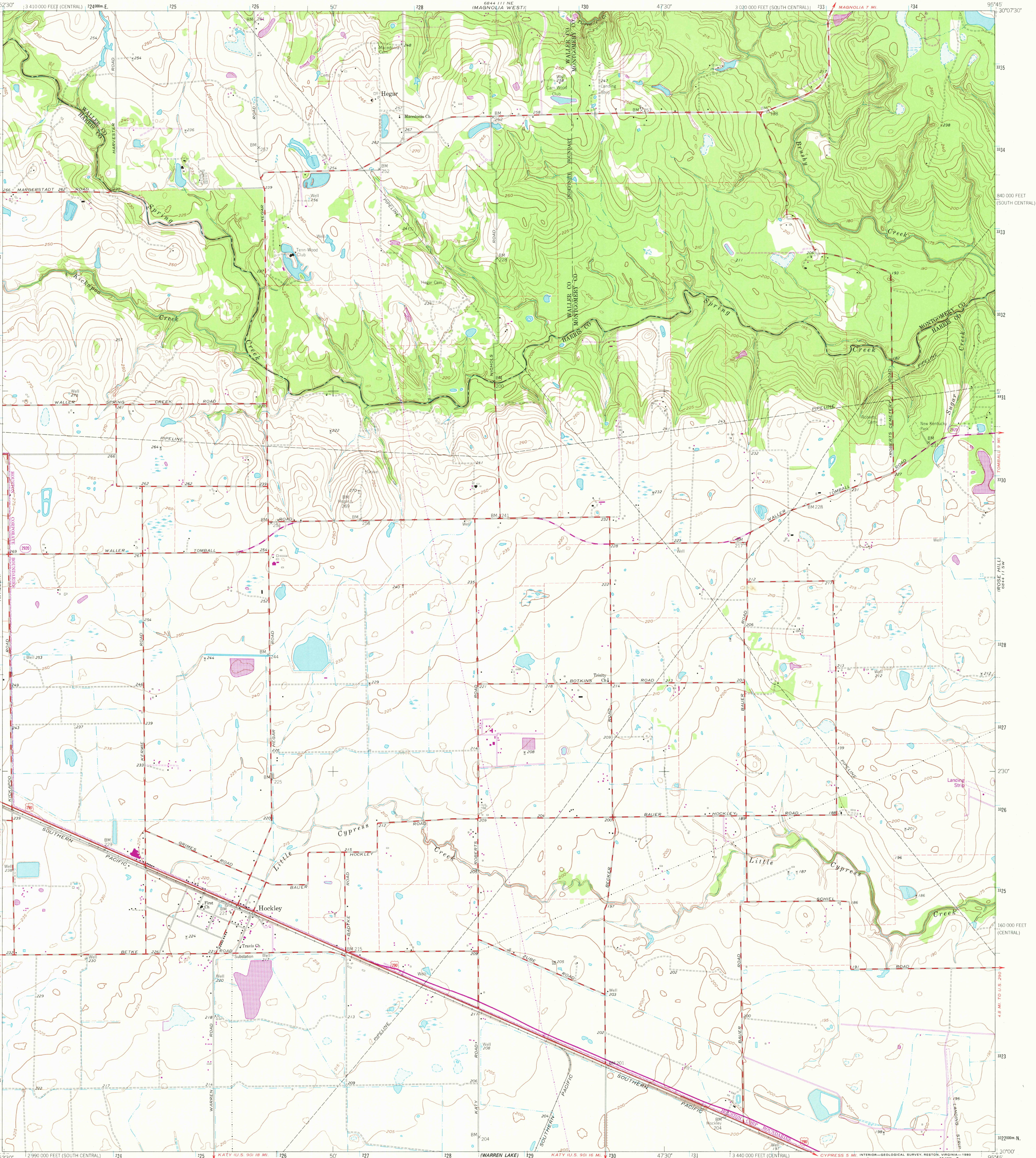


UNITED STATES  
DEPARTMENT OF THE INTERIOR  
GEOLOGICAL SURVEY

HOCKLEY QUADRANGLE  
TEXAS  
7.5 MINUTE SERIES (TOPOGRAPHIC)



Mapped, edited, and published by the Geological Survey  
in cooperation with Texas Water Commission

Control by USGS and NOS/NOAA

Planimetry by photogrammetric methods from aerial photographs  
taken 1957. Topography by planetable surveys 1962

Polycyclic projection. 1927 North American datum  
10,000-foot grid based on Texas coordinate system,  
south central and central zones

1000-meter Universal Transverse Mercator grid ticks,  
zone 15, shown in blue

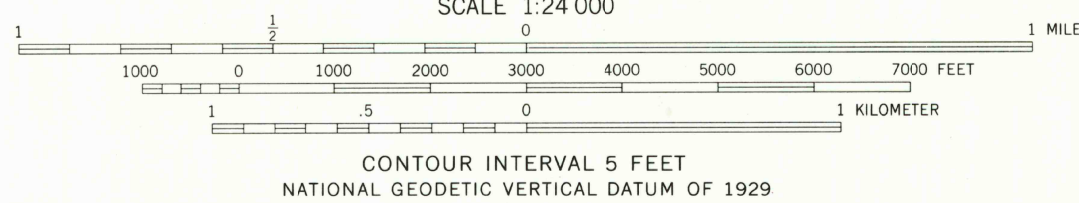
Fine red dashed lines indicate selected fence lines

To place on the predicted North American Datum 1983  
move the projection lines 19 meters south and  
23 meters east as shown by dashed corner ticks

Revisions shown in purple and woodland compiled from  
aerial photographs taken 1977 and other source data  
This information not field checked. Map edited 1980

UTM GRID AND 1980 MAGNETIC NORTH  
DECLINATION AT CENTER OF SHEET

THIS MAP COMPLIES WITH NATIONAL MAP ACCURACY STANDARDS  
FOR SALE BY U. S. GEOLOGICAL SURVEY, DENVER, COLORADO 80225, OR RESTON, VIRGINIA 22092  
A FOLDER DESCRIBING TOPOGRAPHIC MAPS AND SYMBOLS IS AVAILABLE ON REQUEST



QUADRANGLE LOCATION

USGS  
Historical File  
Topographic Division

HOCKLEY, TEX.  
N3000-W9545/7.5

1962  
PHOTOREVISED 1980  
DMA 6844 (11) SE-SERIES V882

SEP 21 1980