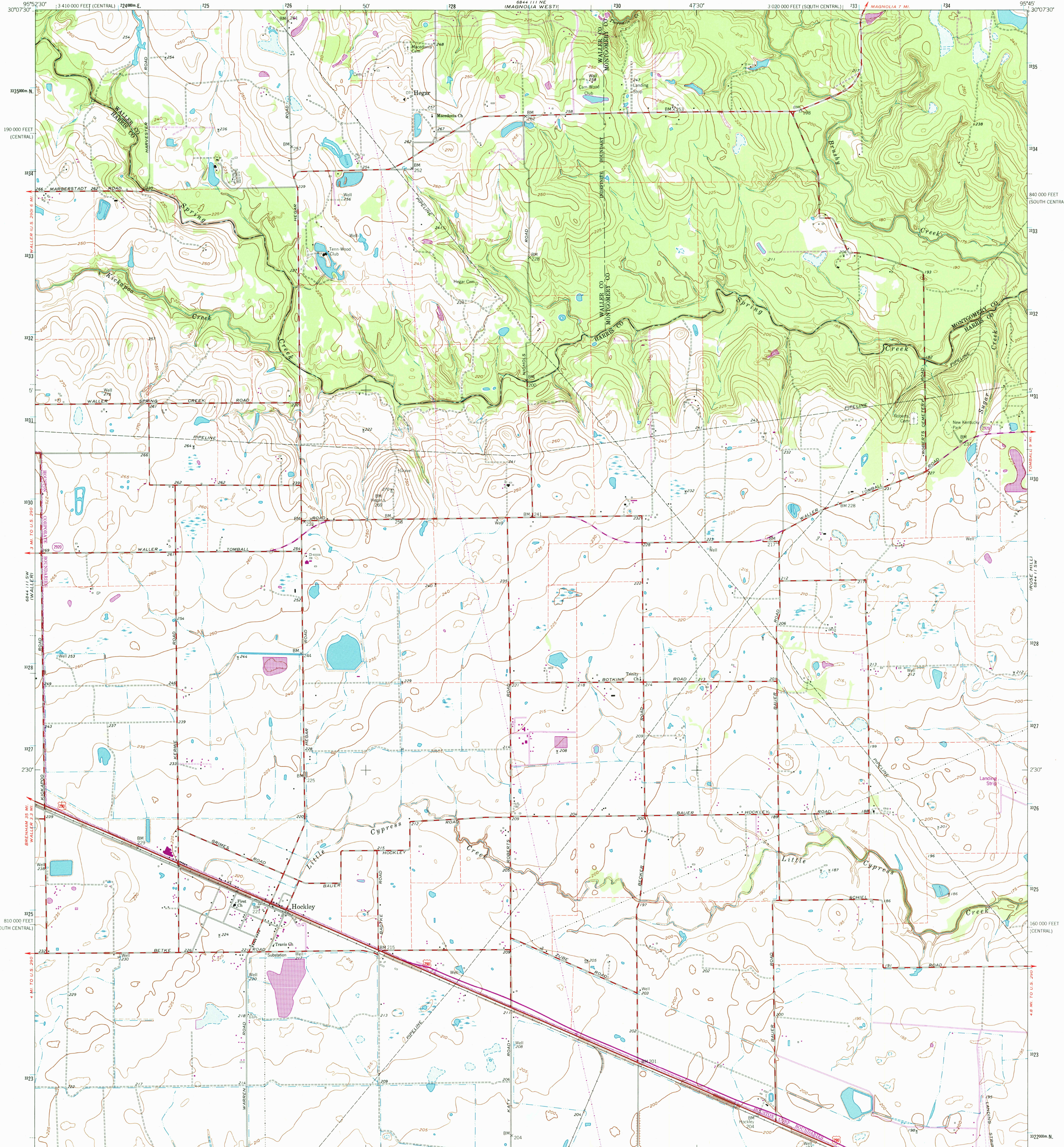


UNITED STATES
DEPARTMENT OF THE INTERIOR
GEOLOGICAL SURVEY

HOCKLEY QUADRANGLE
TEXAS
7.5 MINUTE SERIES (TOPOGRAPHIC)



Mapped, edited, and published by the Geological Survey
in cooperation with Texas Water Commission

Control by USGS and NOS/NOAA

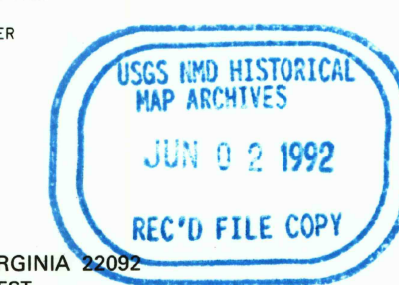
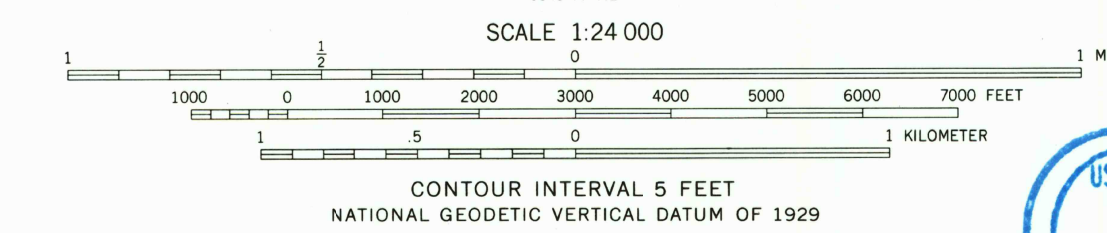
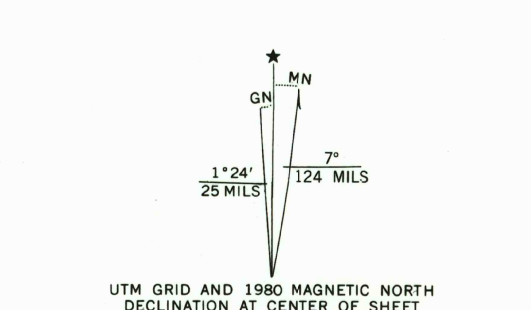
Planimetry by photogrammetric methods from aerial photographs
taken 1957. Topography by planetable surveys 1962

Polyconic projection. 1927 North American Datum
10,000-foot grid based on Texas coordinate system,
south central and central zones

1000-meter Universal Transverse Mercator grid ticks, zone 15,
shown in blue

The difference between 1927 North American Datum and North
American Datum of 1983 (NAD 83) for 7.5 minute intersections is
given in USGS Bulletin 1875. The NAD 83 is shown by dashed
corner ticks

Fine red dashed lines indicate selected fence lines



QUADRANGLE LOCATION
3095-221

- Heavy-duty ——— Light-duty ———
- Medium-duty ——— Unimproved dirt ———
- U.S. Route
- State Route

HOCKLEY, TEX.
30095-A7-TF-024
1962
PHOTOREVISED 1980
DMA 6844 111 SE-SERIES V882

THIS MAP COMPLIES WITH NATIONAL MAP ACCURACY STANDARDS
FOR SALE BY U.S. GEOLOGICAL SURVEY, DENVER, COLORADO 80225, OR RESTON, VIRGINIA 22092
A FOLDER DESCRIBING TOPOGRAPHIC MAPS AND SYMBOLS IS AVAILABLE ON REQUEST