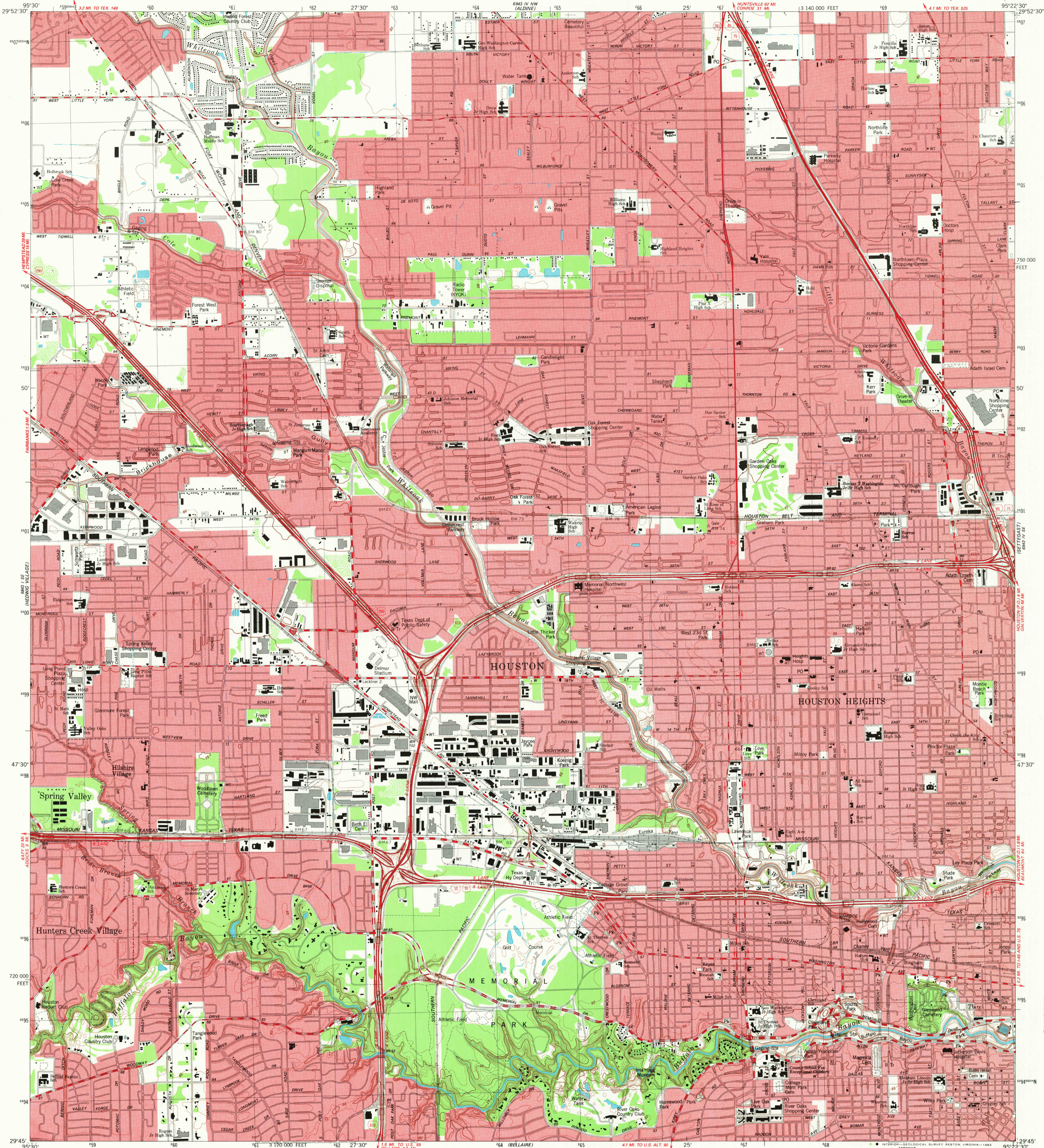


UNITED STATES
DEPARTMENT OF THE INTERIOR
GEOLOGICAL SURVEY

HOUSTON HEIGHTS QUADRANGLE
TEXAS-HARRIS CO.
7.5 MINUTE SERIES (TOPOGRAPHIC)



Mapped, edited, and published by the Geological Survey

Control by USGS and NOS/NOAA

Topography by photogrammetric methods from aerial photographs taken 1976. Field checked 1976. Map edited 1982

Projection and 10,000-foot grid ticks: Texas coordinate system, south central zone (Lambert conformal conic) 1000-meter Universal Transverse Mercator grid, zone 15

1927 North American datum

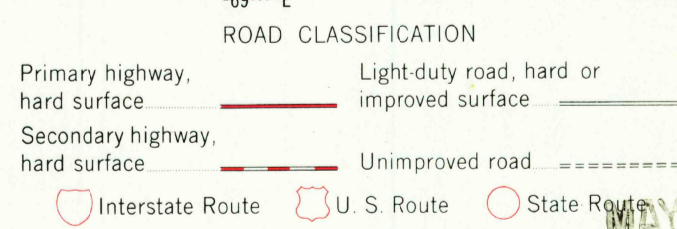
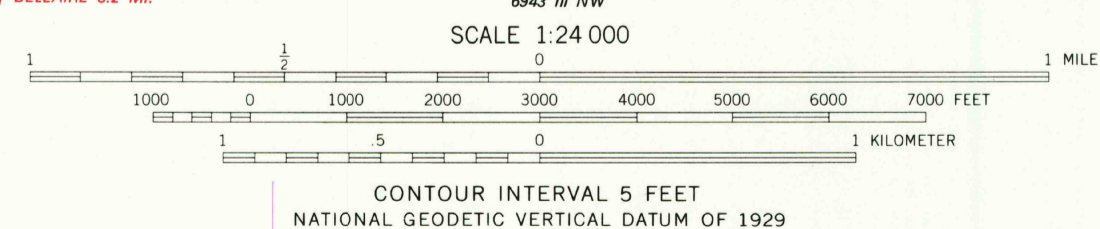
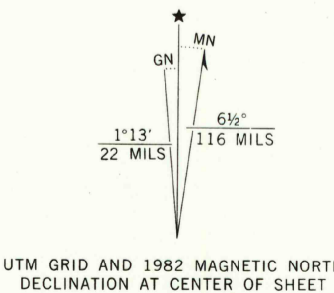
To place on the predicted North American Datum 1983

move the projection lines 20 meters south and 22 meters east as shown by dashed corner ticks

Red tint indicates areas in which only landmark buildings are shown

A portion of this map lies within a subsidence area

Contouring based on 1973 adjustment of vertical control



HOUSTON HEIGHTS, TEX.

N2945-W9522.5/7.5

1982

DMA 6943 IV SW-SERIES V882

THIS MAP COMPLIES WITH NATIONAL MAP ACCURACY STANDARDS
FOR SALE BY U.S. GEOLOGICAL SURVEY, DENVER, COLORADO 80225, OR RESTON, VIRGINIA 22092
A FOLDER DESCRIBING TOPOGRAPHIC MAPS AND SYMBOLS IS AVAILABLE ON REQUEST

2995-432

RETURN TO:
USGS AND HISTORICAL MAP ARCHIVES

MAY 12 1983

2000