

DEPARTMENT OF THE INTERIOR
FRANKLIN K. LANE, SECRETARY
U. S. GEOLOGICAL SURVEY
GEORGE OTIS SMITH, DIRECTOR

TOPOGRAPHY

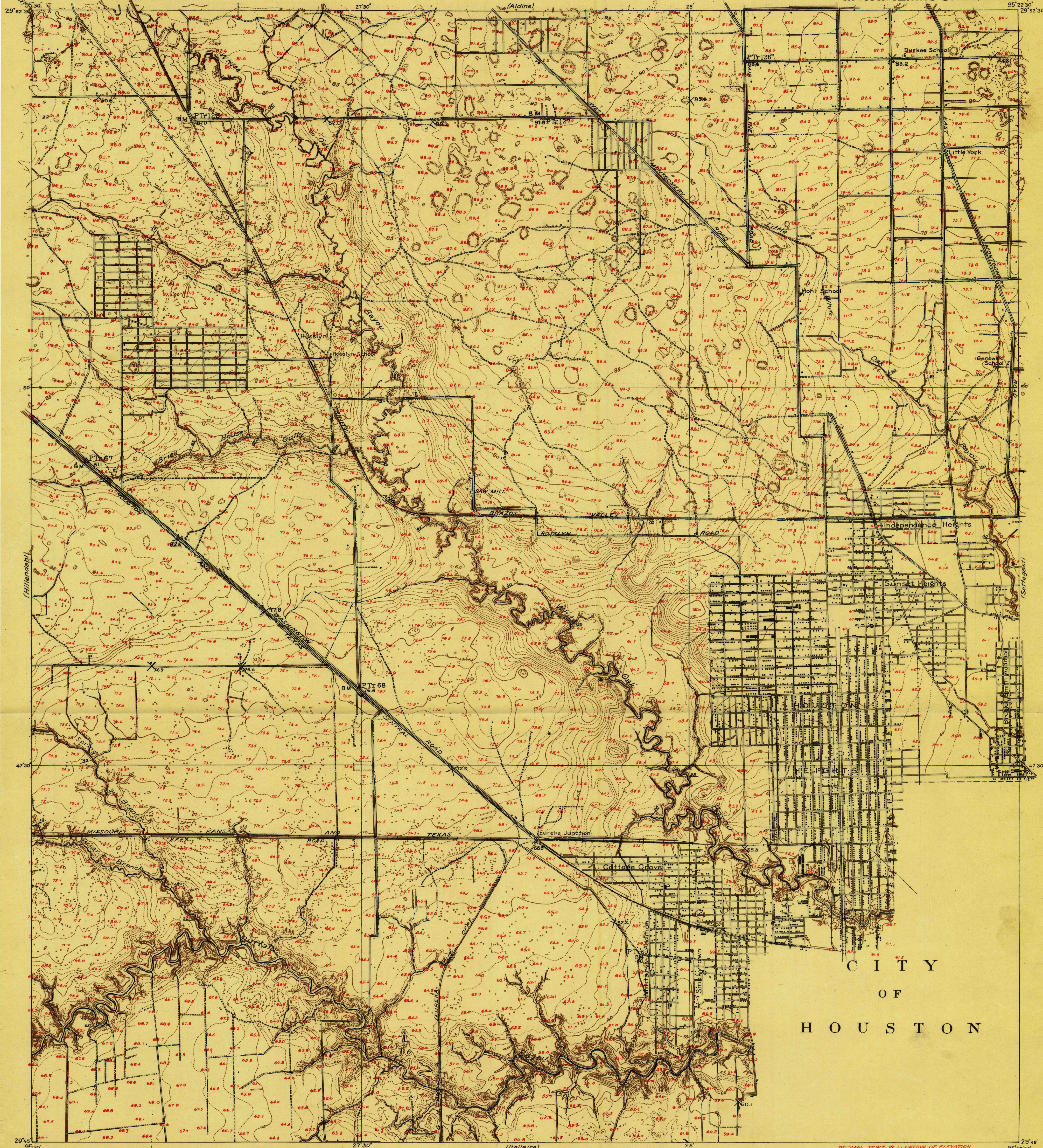
HARRIS COUNTY, TEXAS
W. H. WARD, COUNTY JUDGE

W. H. LLOYD, J. A. SMITH, W. H. KISER, D. BARKER
COUNTY COMMISSIONERS

INSPECTION FILES
TOPOGRAPHY.

INSPECTION FILES
TOPOGRAPHY.

TEXAS
HARRIS COUNTY
HOUSTON HEIGHTS QUADRANGLE

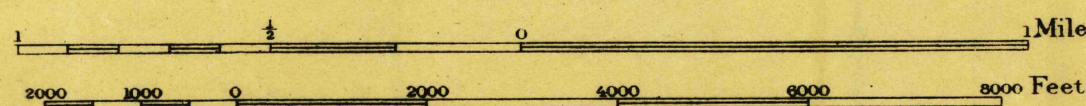


R. B. Marshall, Chief Geographer
Sledge Tatum, Geographer in charge
Topography by B. A. Jenkins and C. A. Stonesifer
Control by U. S. Coast and Geodetic Survey
E. L. McNair and R. R. Monbeck
Surveyed in 1915

SURVEYED IN COOPERATION WITH HARRIS COUNTY, TEXAS

Shaded relief
Jenkins

Scale 24000



Contour interval 1 foot
Datum is mean sea level

USGS
Historical File
Topographic Division

TRUE NORTH
MAGNETIC NORTH
APPROXIMATE MEAN