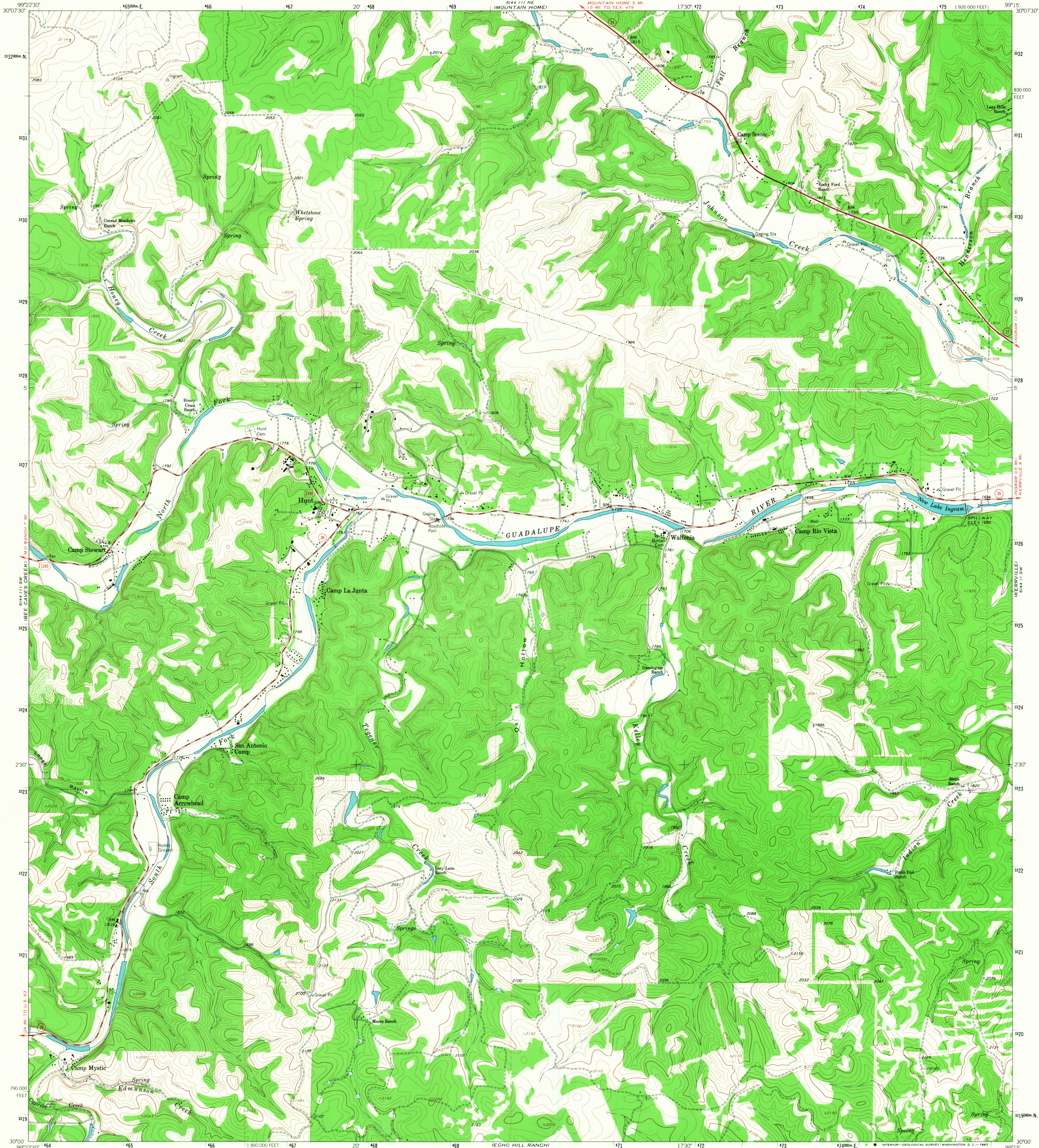
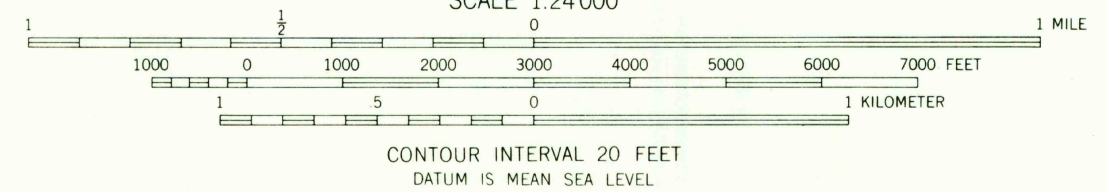
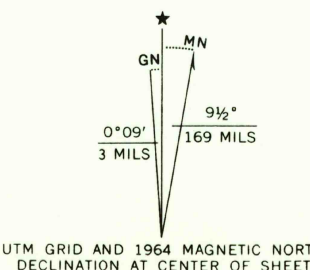


UNITED STATES
DEPARTMENT OF THE INTERIOR
GEOLOGICAL SURVEY

HUNT QUADRANGLE
TEXAS-KERR CO.
7.5 MINUTE SERIES (TOPOGRAPHIC)



Mapped, edited, and published by the Geological Survey
Control by USGS and USC&GS
Topography by photogrammetric methods from aerial
photographs taken 1962 and 1963. Field checked 1964
Polyconic projection. 1927 North American datum
10,000-foot grid based on Texas coordinate system, south central zone
1000-meter Universal Transverse Mercator grid ticks,
zone 14, shown in blue
Fine red dashed lines indicate selected fence lines



USGS
Historical File
Topographic Division



ROAD CLASSIFICATION
Heavy-duty ——— Light-duty ———
Medium-duty ——— Unimproved dirt ———
○ State Route

U.S.G.S.
FILE COPY
TOPOGRAPHIC DIVISION

HUNT, TEX.
N3000-W9915/7.5
1964

AMS 6144 111 SE-SERIES V882

MAY 19 1967

3145