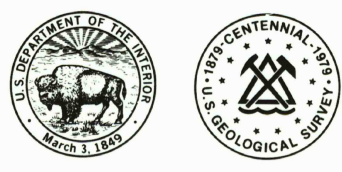
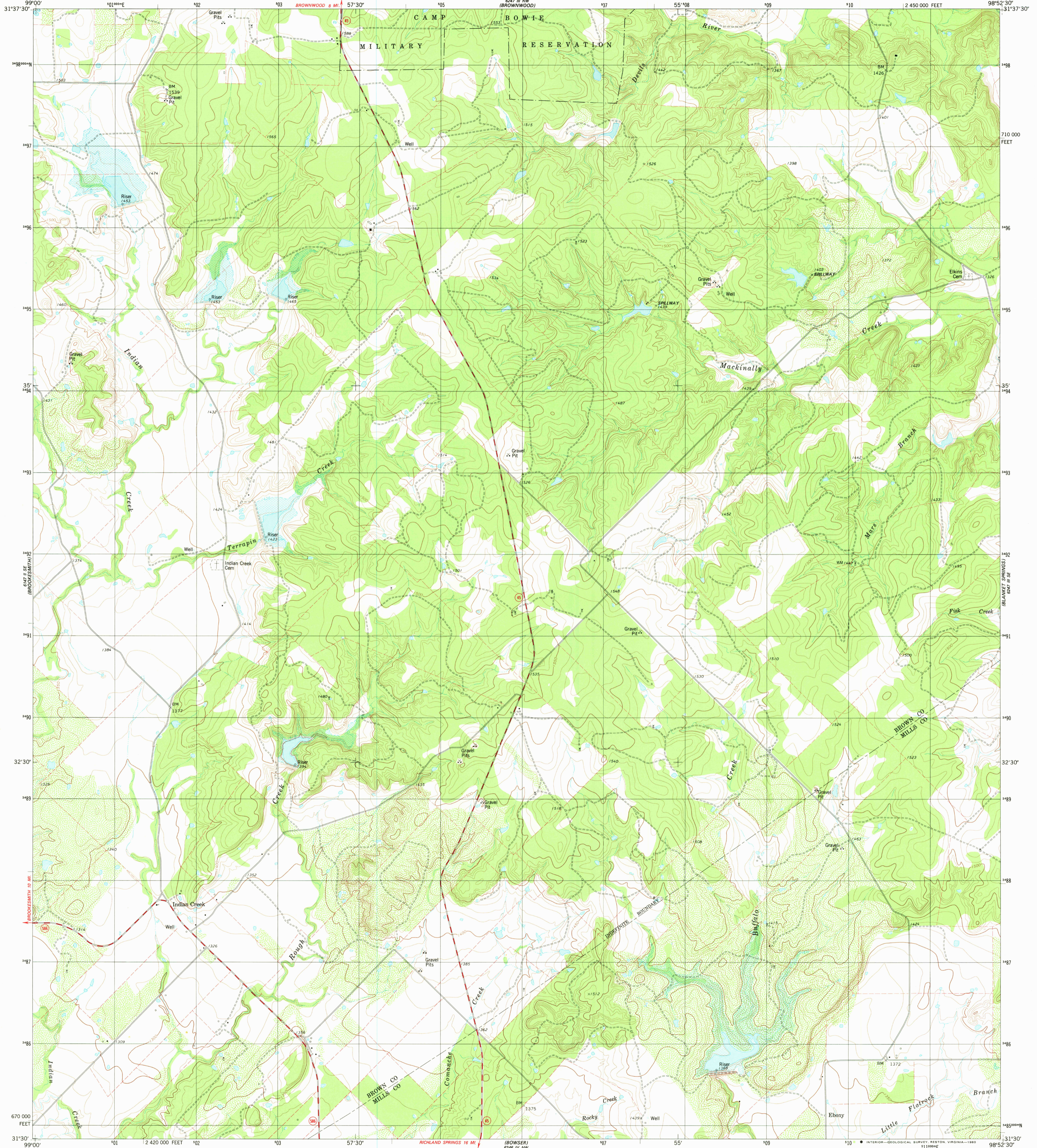


647 III SE (BROWNSVILLE)



647 III NE (ZEPHYR)



Mapped, edited, and published by the Geological Survey

Control by USGS and NOS/NOAA

Topography by photogrammetric methods from aerial photographs taken 1975. Field checked 1976. Map edited 1979

Projection and 10,000-foot grid ticks: Texas coordinate system, central zone (Lambert conformal conic)

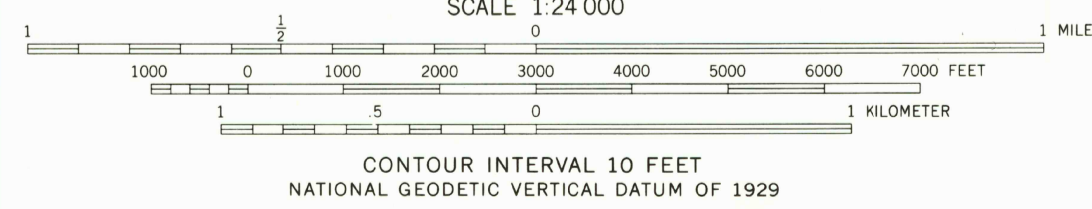
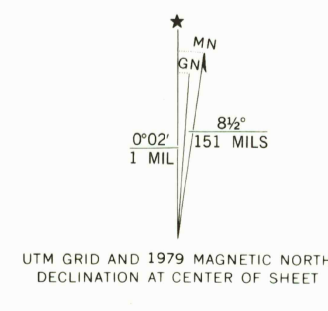
1000-meter Universal Transverse Mercator grid, zone 14 1927 North American datum

To place on the predicted North American Datum 1983 move the projection lines 13 meters south and 31 meters east as shown by dashed corner ticks

Areas covered by dashed light-blue pattern are subject to controlled inundation

Fine red dashed lines indicate selected fence lines

There may be private inholdings within the boundaries of the National or State reservations shown on this map



CONTOUR INTERVAL 10 FEET NATIONAL GEODETIC VERTICAL DATUM OF 1929

THIS MAP COMPLIES WITH NATIONAL MAP ACCURACY STANDARDS FOR SALE BY U.S. GEOLOGICAL SURVEY, DENVER, COLORADO 80225, OR RESTON, VIRGINIA 22092



QUADRANGLE LOCATION

ROAD CLASSIFICATION	
Primary highway, hard surface	Light-duty road, hard or improved surface
Secondary highway, hard surface	Unimproved road
Interstate Route	U.S. Route
	State Route

USGS Historical File Topographic Division

INDIAN CREEK, TEX. SW4 ZEPHYR 15' QUADRANGLE N3130-W9852.5/7.5

3198-322

1979

DMA 6247 III SW-SERIES V882

MAY - 5 1980

2250