

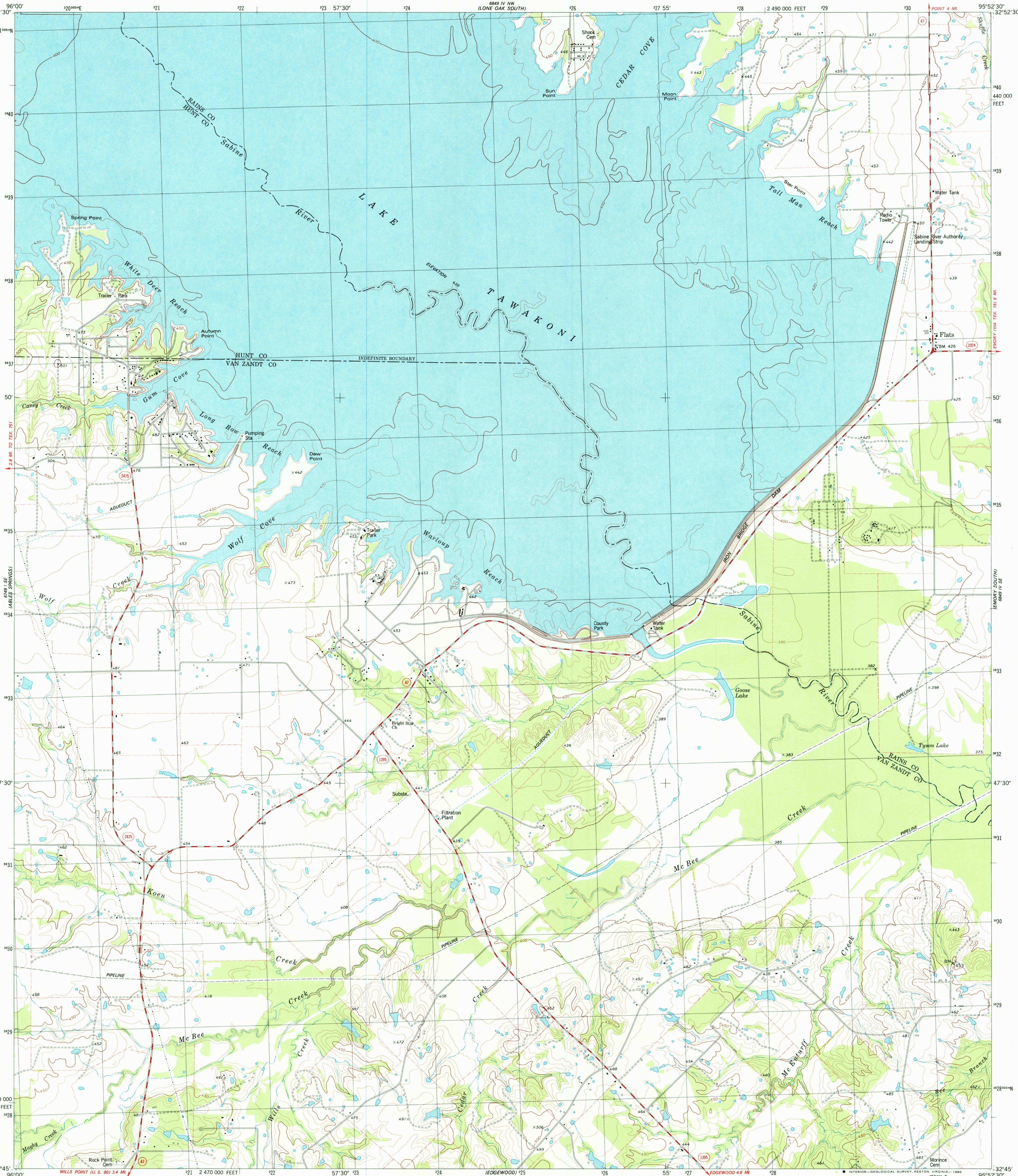
UNITED STATES  
DEPARTMENT OF THE INTERIOR  
GEOLOGICAL SURVEY

STATE OF TEXAS  
TEXAS DEPARTMENT OF WATER RESOURCES

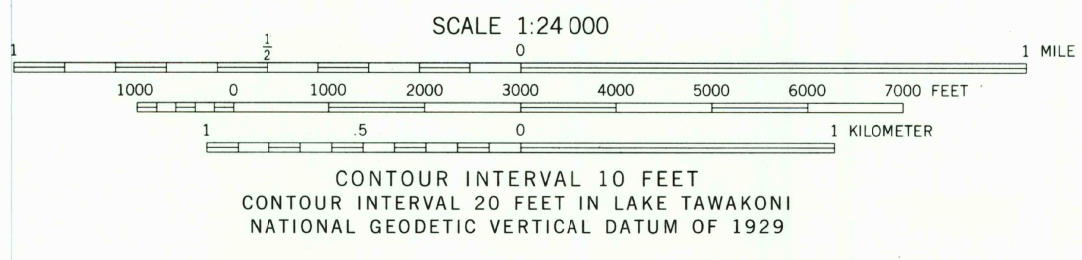
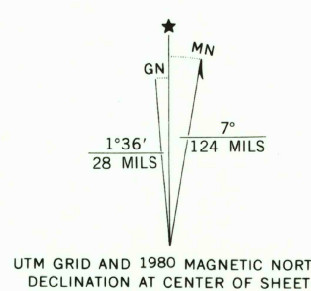
IRON BRIDGE DAM QUADRANGLE  
TEXAS  
7.5 MINUTE SERIES (TOPOGRAPHIC)

SW/4 EMORY 15' QUADRANGLE

886 V NE  
(EMORY NORTH)



Mapped, edited, and published by the Geological Survey  
Control by USGS and NOS/NOAA  
Topography by photogrammetric methods from aerial photographs  
taken 1975. Field checked 1976. Map edited 1980  
Projection and 10,000-foot grid ticks: Texas  
coordinate system, north central zone (Lambert conformal conic)  
1000-meter Universal Transverse Mercator grid, zone 15  
1927 North American datum  
To place on the predicted North American Datum 1983  
move the projection lines 11 meters south and  
24 meters east as shown by dashed corner ticks  
Fine red dashed lines indicate selected fence lines



THIS MAP COMPLIES WITH NATIONAL MAP ACCURACY STANDARDS  
FOR SALE BY U. S. GEOLOGICAL SURVEY, DENVER, COLORADO 80225, OR RESTON, VIRGINIA 22092  
A FOLDER DESCRIBING TOPOGRAPHIC MAPS AND SYMBOLS IS AVAILABLE ON REQUEST



QUADRANGLE LOCATION

ROAD CLASSIFICATION  
Primary highway, hard surface  
Secondary highway, hard surface  
Unimproved road  
Interstate Route  
U. S. Route  
State Route

IRON BRIDGE DAM, TEX.  
SW/4 EMORY 15' QUADRANGLE  
N3245-W9552.5/7.5

USGS  
Historical File  
Topographic Division

1980

DMA 6849 IV SW-SERIES V882

JUN 19 1980

2250