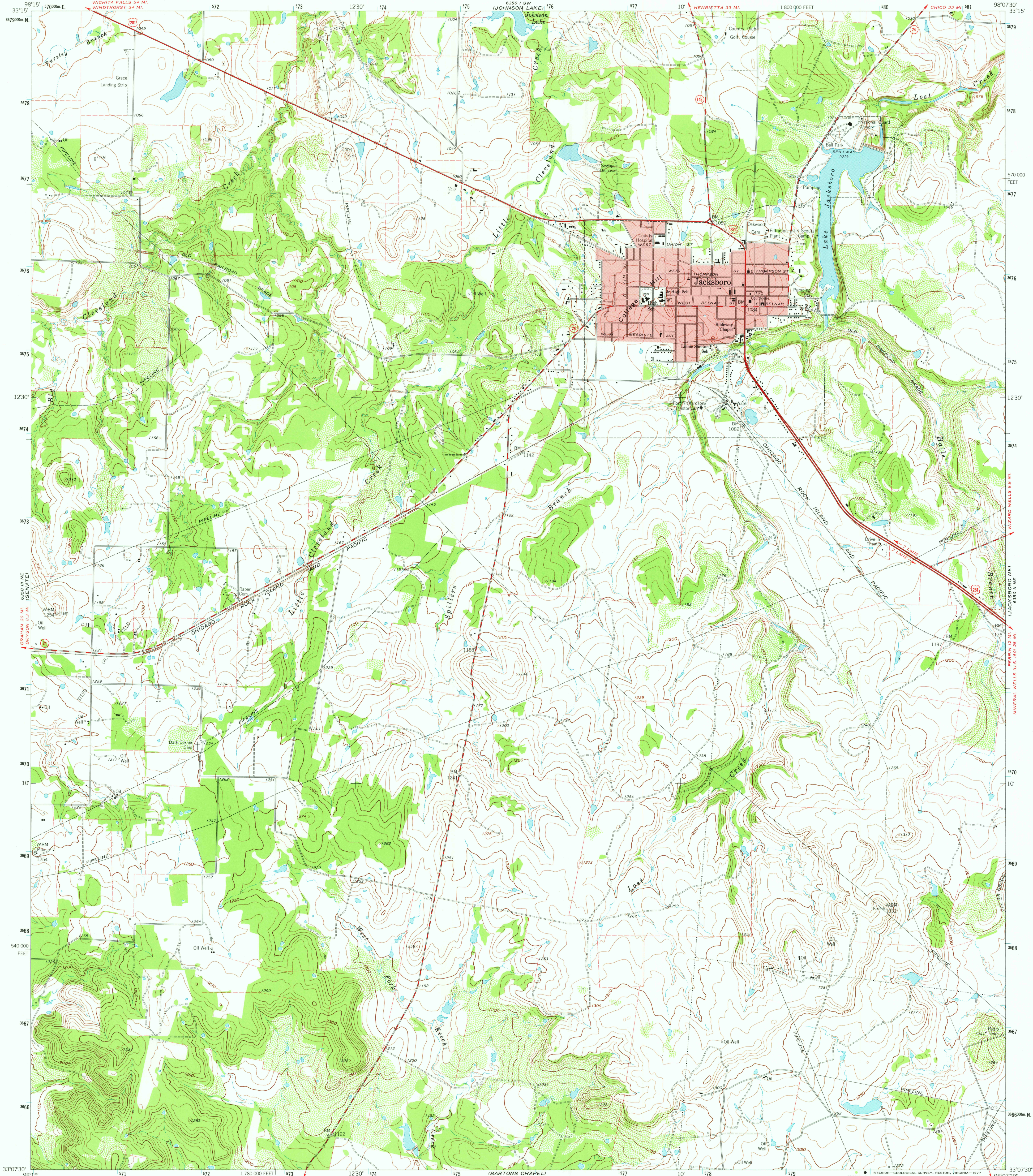


UNITED STATES
DEPARTMENT OF THE INTERIOR
GEOLOGICAL SURVEY

JACKSBORO QUADRANGLE
TEXAS-JACK CO.
7.5 MINUTE SERIES (TOPOGRAPHIC)



Mapped, edited, and published by the Geological Survey

Control by USGS and USC&GS

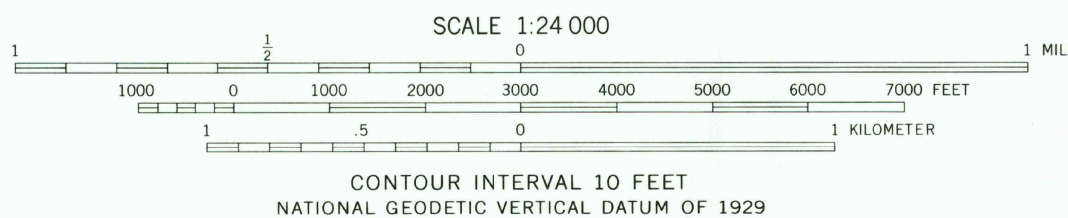
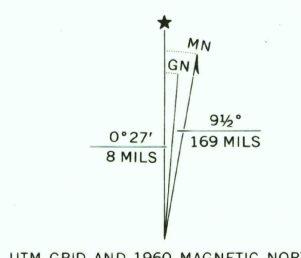
Topography by photogrammetric methods from aerial photographs taken 1958. Field checked 1960.

Polyconic projection. 1927 North American datum. 10,000-foot grid based on Texas coordinate system, north central zone.

1000-meter Universal Transverse Mercator grid ticks, zone 14, shown in blue.

Red tint indicates area in which only landmark buildings are shown.

Fine red dashed lines indicate selected fence and field lines where generally visible on aerial photographs. This information is unchecked.



THIS MAP COMPLIES WITH NATIONAL MAP ACCURACY STANDARDS
FOR SALE BY U.S. GEOLOGICAL SURVEY, DENVER, COLORADO 80225, OR RESTON, VIRGINIA 22092
A FOLDER DESCRIBING TOPOGRAPHIC MAPS AND SYMBOLS IS AVAILABLE ON REQUEST



QUADRANGLE LOCATION

ROAD CLASSIFICATION	
Heavy-duty	Light-duty
Medium-duty	Unimproved dirt
U.S. Route	State Route

USGS
Historical File
Topographic Division

JACKSBORO, TEX.
N3307.5-W9807.5/7.5
1960

AMS 6350 II NW-SERIES V882

FEB 02 1977

2300