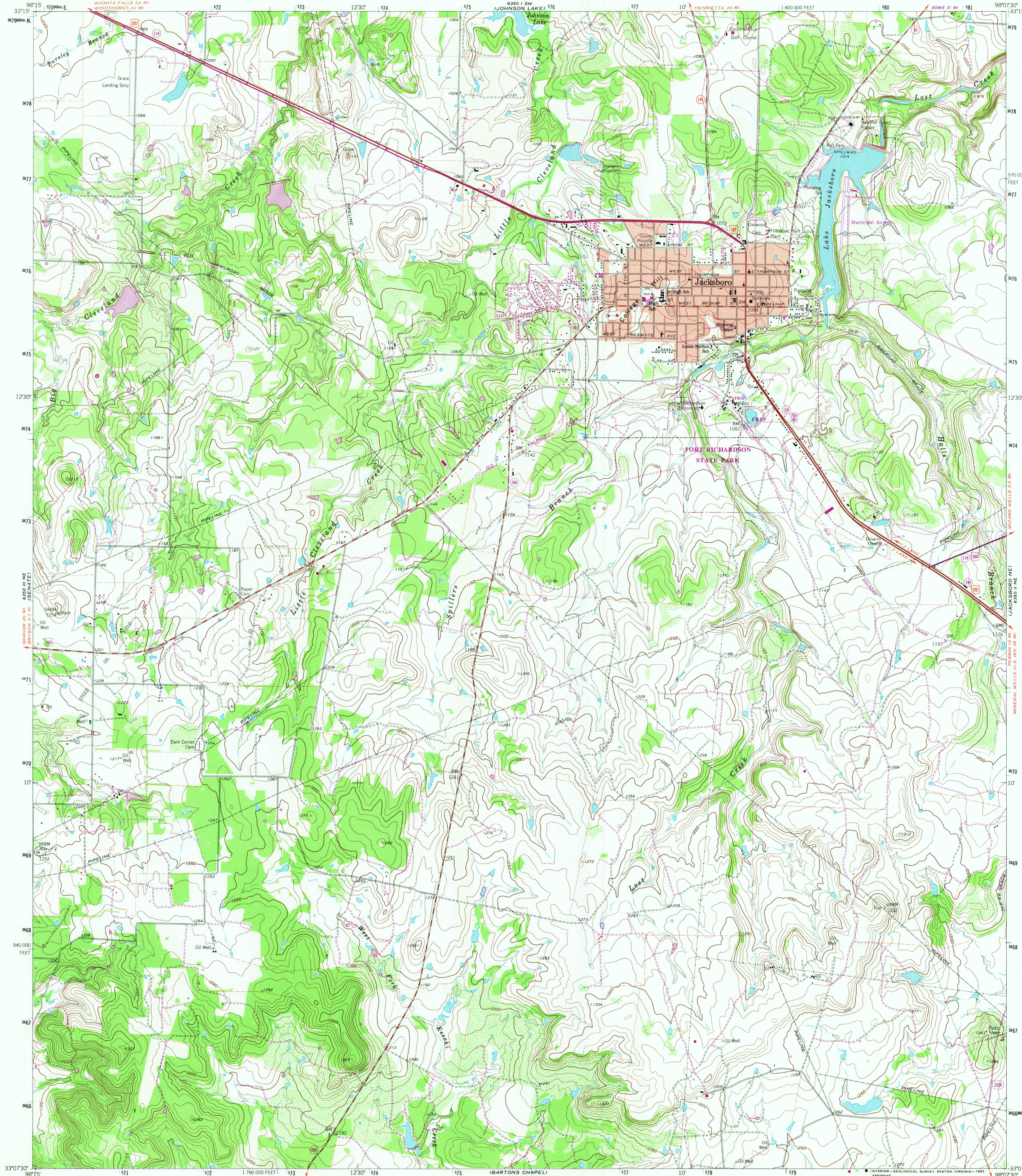


UNITED STATES
DEPARTMENT OF THE INTERIOR
GEOLOGICAL SURVEY

JACKSBORO QUADRANGLE
TEXAS-JACK CO.
7.5 MINUTE SERIES (TOPOGRAPHIC)



Mapped, edited, and published by the Geological Survey
Control by USGS and NOS/NOAA
Topography by photogrammetric methods from aerial photographs
taken 1958. Field checked 1960
Polyconic projection. 10,000-foot grid ticks based on Texas coordinate
system, north central zone. 1000-meter Universal Transverse Mercator
grid ticks, zone 14, shown in blue. 1927 North American Datum
To place on the predicted North American Datum 1983 move the
projection lines 8 meters south and 31 meters east as shown
by dashed corner ticks
Fine red dashed lines indicate selected fence and field lines where
generally visible on aerial photographs. This information is unchecked
Red tint indicates area in which only landmark buildings are shown
There may be private inholdings within the boundaries of
the National or State reservations shown on this map

Revisions shown in purple and woodland compiled from aerial
photographs taken 1979 and other sources. This
information not field checked. Map edited 1982

SCALE 1:24 000
CONTOUR INTERVAL 10 FEET
NATIONAL GEODETIC VERTICAL DATUM OF 1929
THIS MAP COMPLIES WITH NATIONAL MAP ACCURACY STANDARDS
FOR SALE BY U.S. GEOLOGICAL SURVEY, DENVER, COLORADO 80225, OR RESTON, VIRGINIA 22092
A FOLDER DESCRIBING TOPOGRAPHIC MAPS AND SYMBOLS IS AVAILABLE ON REQUEST

ROAD CLASSIFICATION
Heavy-duty ——— Light-duty ———
Medium-duty ——— Unimproved dirt ———
U.S. Route ——— State Route ———
JACKSBORO, TEX.
N3307.5 - W9807.5/7.5
1960
PHOTOREVISED 1982
DMA 6350 II NW-SERIES Y882

RETURN TO:
USGS AND HISTORICAL MAP ARCHIVES

MAR 15 1983