

Spelling of this Quad has been changed to

Carancahua TEXAS
(GALVESTON COUNTY)
KARANKAWA LAKE QUADRANGLE

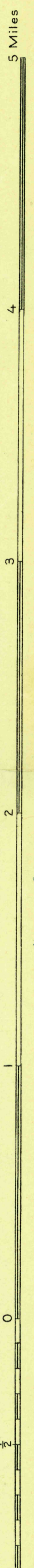
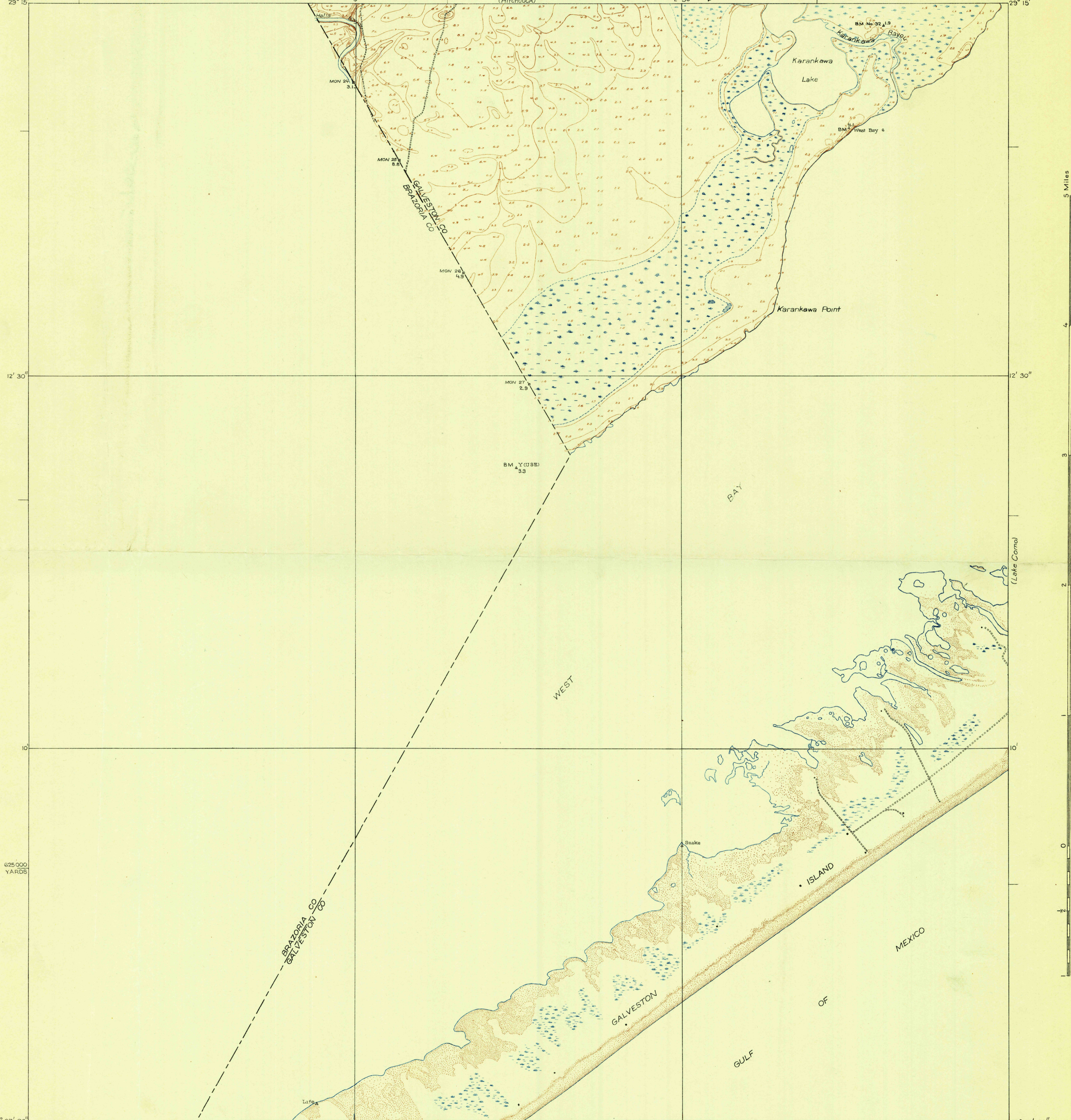
(Virginia Point)

(Mustang Bayou)

DEPARTMENT OF THE INTERIOR
U. S. GEOLOGICAL SURVEY

GALVESTON COUNTY, TEXAS
COUNTY COMMISSIONERS COURT
E. B. HOLMAN, COUNTY JUDGE
JAMES A. BODDEKER (PRECINCT 1), HUMPHREY D. BOYD (PRECINCT 2)
VICTOR DANTIN (PRECINCT 3), AND W. T. SMITH (PRECINCT 4)
C. C. WASHINGTON, COUNTY ENGINEER

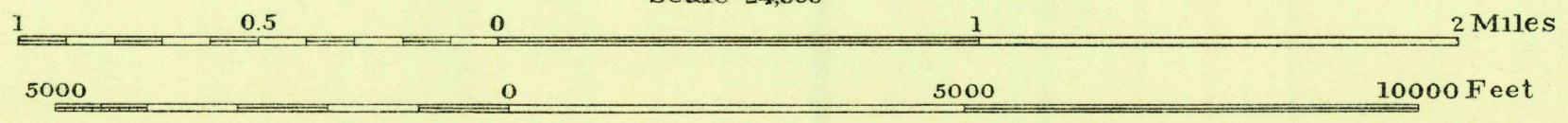
Advance sheet
Subject to correction



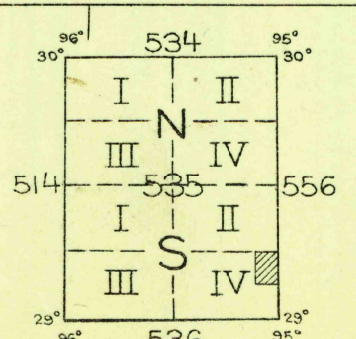
625,000 YARDS

29° 07' 30" 95° 07' 30" 1200 000 YARDS
Glenn S. Smith, Division Engineer
Topography by J. A. Shumate
Culture and drainage on Galveston Island
compiled from aerial photographs taken by
Air Corps, U. S. Army (Contours not mapped on Galveston I.)
Control by U. S. Coast and Geodetic Survey Corps of Engineers, U. S. Army,
and Texas Reclamation Department
Surveyed in 1929

TRUE NORTH
MAGNETIC NORTH
APPROXIMATE MEAN
DECLINATION, 1929



Scale 24,000
Contour interval 1 foot
Datum is mean sea level



Polyconic projection. North American datum
5000 yard grid based upon U. S. zone system, D

KARANKAWA LAKE, TEX.
Carancahua-Tex