

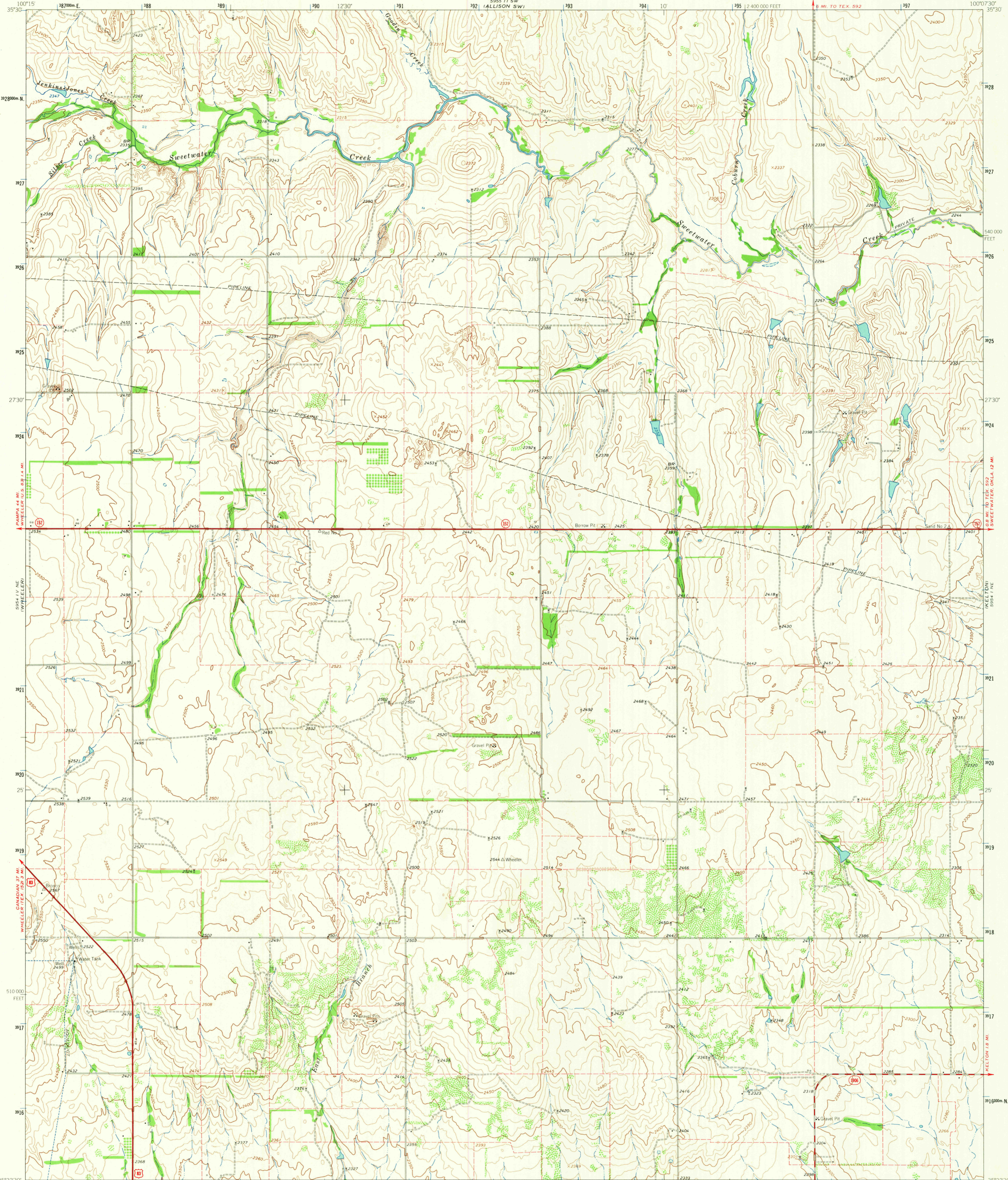
5954 I 1 SE (BRISCOL)

UNITED STATES
DEPARTMENT OF THE INTERIOR
GEOLOGICAL SURVEY

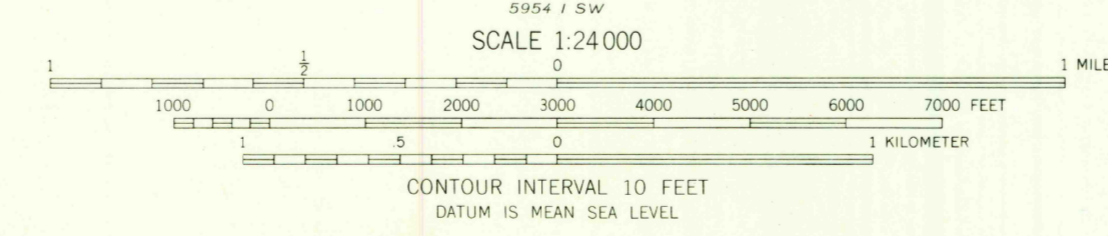
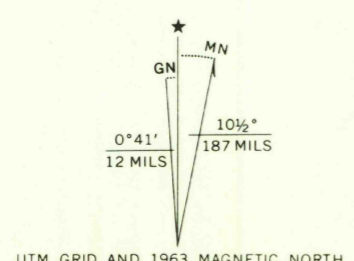
STATE OF TEXAS
TEXAS WATER COMMISSION

KELTON NW QUADRANGLE
TEXAS-WHEELER CO
7.5 MINUTE SERIES (TOPOGRAPHIC)

5954 I 1 SE (FALLOON)



Mapped, edited, and published by the Geological Survey
Control by USGS and USC&GS
Topography by photogrammetric methods from aerial
photographs taken 1962. Field checked 1963
Polyconic projection. 1927 North American datum
10,000-foot grid based on Texas coordinate system, north zone
1000-meter Universal Transverse Mercator grid ticks,
zone 14, shown in blue
Fine red dashed lines indicate selected fence lines



USGS
Historical File
Topographic Division



ROAD CLASSIFICATION
Heavy-duty ——— Light-duty ———
Medium-duty ——— Unimproved dirt ———
U.S. Route ——— State Route ———

THIS MAP COMPLIES WITH NATIONAL MAP ACCURACY STANDARDS
FOR SALE BY U.S. GEOLOGICAL SURVEY, DENVER 25, COLORADO OR WASHINGTON 25, D. C.
A FOLDER DESCRIBING TOPOGRAPHIC MAPS AND SYMBOLS IS AVAILABLE ON REQUEST

U.S.G.S.
FILE COPY
TOPOGRAPHIC DIVISION

KELTON NW, TEX.
N3522 5-W10007 5/7 5
1963
AMS 5954 I NW-SERIES V882

JUN 16 1965
2325