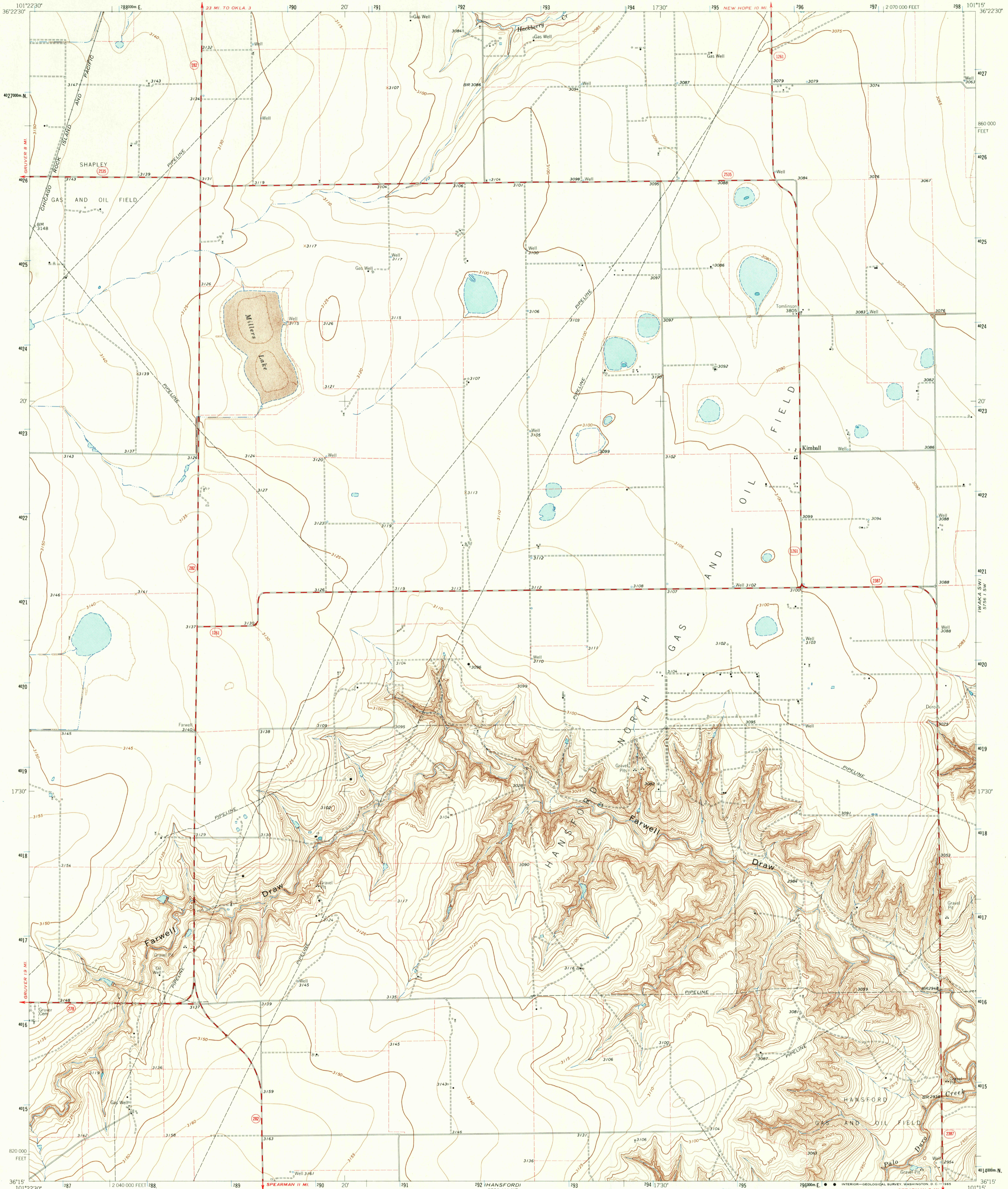


5756 1 NW
HANSFORD CAMP



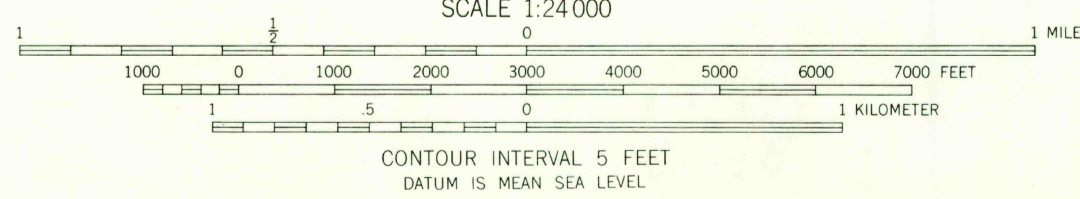
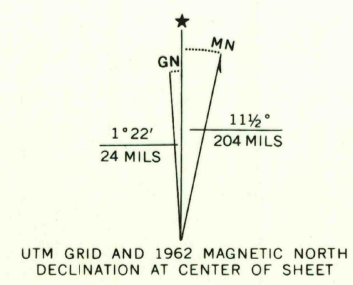
Mapped, edited, and published by the Geological Survey

Control by USGS and USC&GS

Topography by photogrammetric methods from aerial photographs taken 1962 and planetable surveys 1962

Polyconic projection 1927 North American datum 10,000-foot grid based on Texas coordinate system, north zone 1000-meter Universal Transverse Mercator grid ticks, zone 14, shown in blue

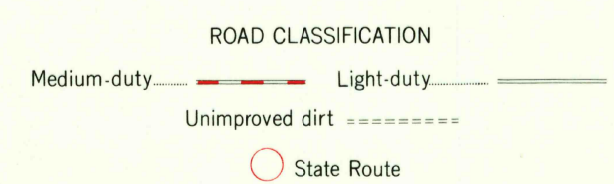
Fine red dashed lines indicate selected fence lines



USGS
Historical File
Topographic Division



QUADRANGLE LOCATION



U.S.G.S.
FILE COPY
TOPOGRAPHIC DIVISION

KIMBALL, TEX.
N3615-W10115/7.5

1962

AMS 5756 1V SE-SERIES V882

THIS MAP COMPLIES WITH NATIONAL MAP ACCURACY STANDARDS
FOR SALE BY U.S. GEOLOGICAL SURVEY, DENVER 25, COLORADO OR WASHINGTON 25, D.C.
A FOLDER DESCRIBING TOPOGRAPHIC MAPS AND SYMBOLS IS AVAILABLE ON REQUEST

MAR 17 1965

2170