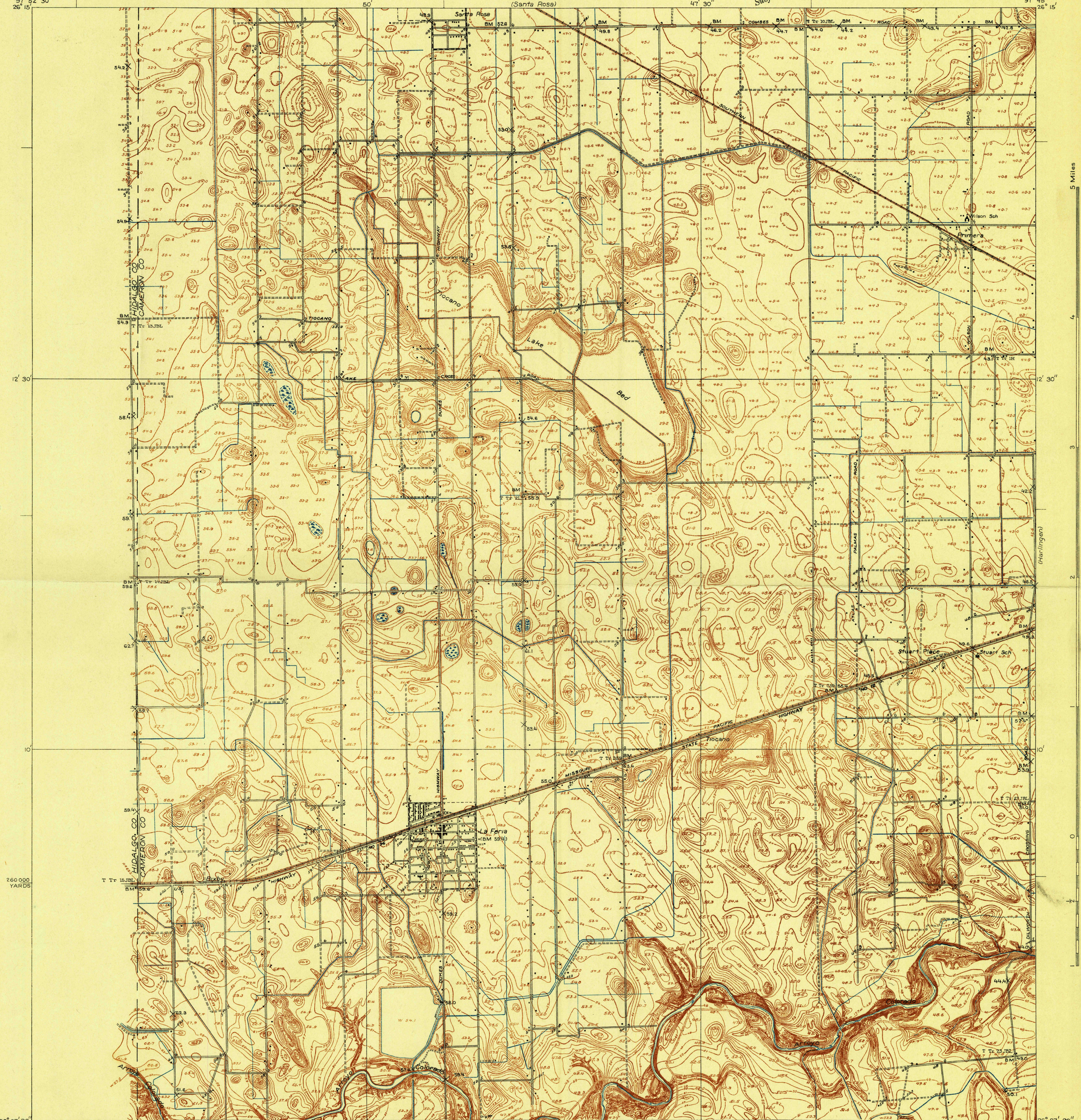
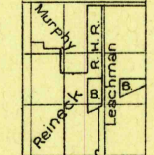


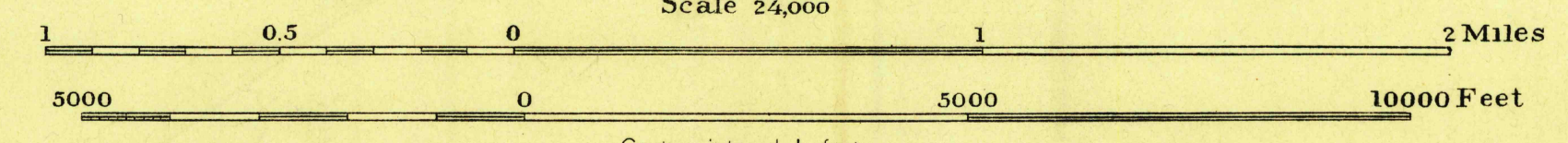
Advance sheet Subject to correction



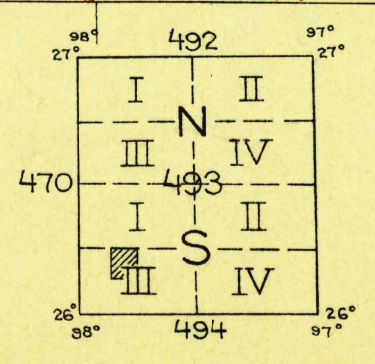
905 000 YARDS  
H. H. Hodgson, Division Engineer  
Topography by R.H. Reineck, R.W. Burchard,  
T.F. Murphy, and J.B. Leachman  
Control by U. S. Geological Survey,  
U. S. Coast and Geodetic Survey, and  
Texas Reclamation Department  
Surveyed in 1929



APPROXIMATE MEAN DECLINATION, 1929



Contour interval 1 foot  
Datum is mean sea level



Polyconic projection. North American datum  
5000 yard grid based upon U. S. zone system, D

LA FERIA, TEX.