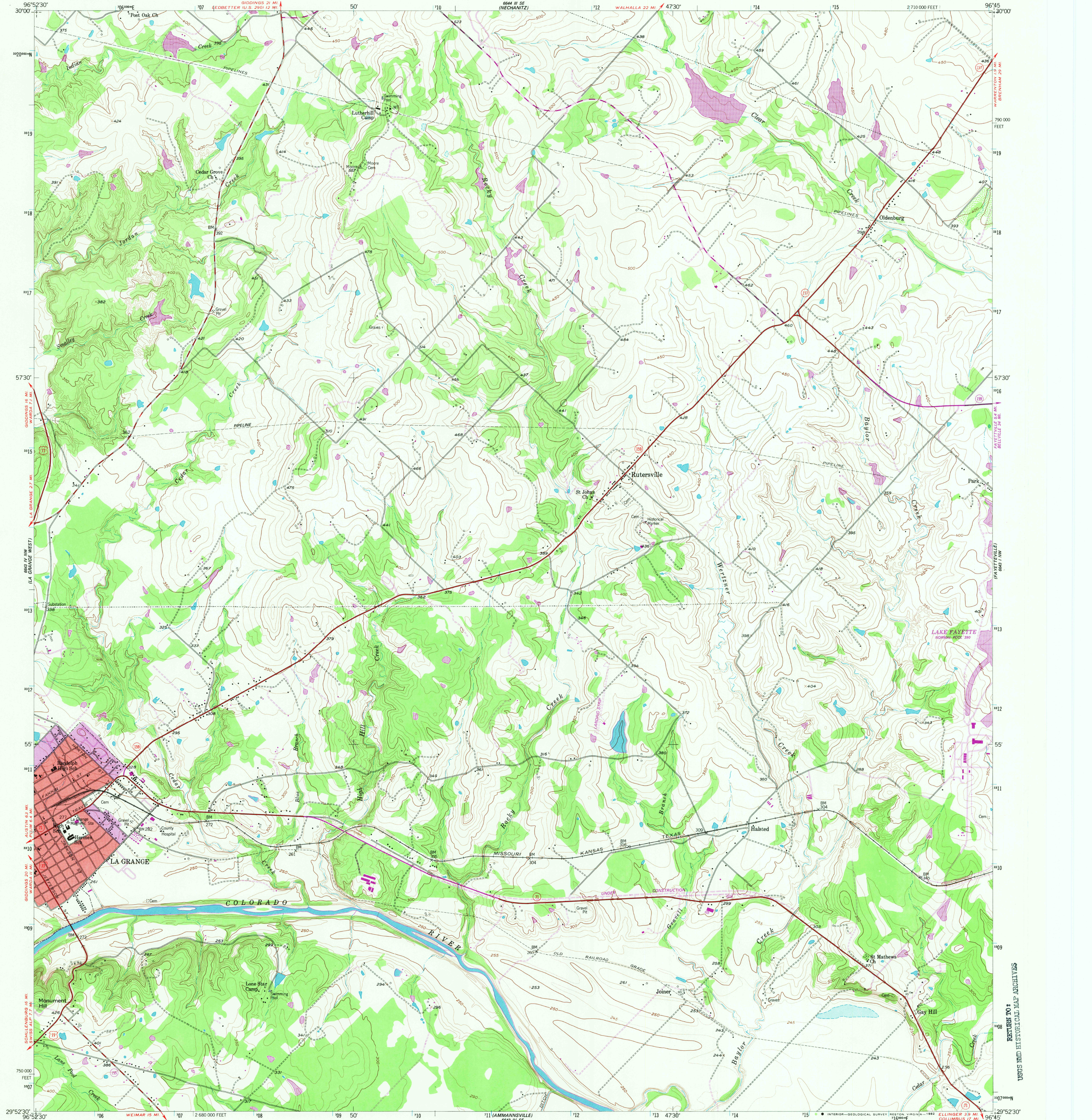


UNITED STATES
DEPARTMENT OF THE INTERIOR
GEOLOGICAL SURVEY

LA GRANGE EAST QUADRANGLE
TEXAS-FAYETTE CO.
7.5 MINUTE SERIES (TOPOGRAPHIC)



Mapped, edited, and published by the Geological Survey
Control by USGS and NOS/NOAA
Topography from aerial photographs by photogrammetric methods
Aerial photographs taken 1956. Field check 1957
Polyconic projection. 1927 North American datum
10,000-foot grid based on Texas coordinate system,
south central zone
1000-meter Universal Transverse Mercator grid ticks,
zone 14, shown in blue
Red tint indicates area in which only
landmark buildings are shown
To place on the predicted North American Datum 1983
move the projection lines 20 meters south and
25 meters east as shown by dashed corner ticks
Purple tint indicates extension of urban areas

Revisions shown in purple and woodland compiled from
aerial photographs taken 1978 and other source data
This information not field checked. Map edited 1991

UTM GRID AND 1981 MAGNETIC NORTH
DECLINATION AT CENTER OF SHEET

SCALE 1:24 000
1 1000 0 1000 2000 3000 4000 5000 6000 7000 FEET
1 5 0 5 10 KILOMETER

CONTOUR INTERVAL 10 FEET
DASHED LINES REPRESENT 5-FOOT CONTOURS
NATIONAL GEODETIC VERTICAL DATUM OF 1929

THIS MAP COMPLIES WITH NATIONAL MAP ACCURACY STANDARDS
FOR SALE BY U. S. GEOLOGICAL SURVEY DENVER, COLORADO 80225, OR RESTON, VIRGINIA 22092
A FOLDER DESCRIBING TOPOGRAPHIC MAPS AND SYMBOLS IS AVAILABLE ON REQUEST

ROAD CLASSIFICATION
Heavy-duty ——— Light-duty ———
Medium-duty ——— Unimproved dirt ———
U.S. Route ——— State Route ———

LA GRANGE EAST, TEX.
N2952.5—W9645/7.5
1957
PHOTOREVISED 1981
DMA 6643 IV NE—SERIES V882

QUADRANGLE LOCATION
TEXAS

RETURN TO:
USGS AND HISTORICAL MAP ARCHIVES

MAR 2 1983