

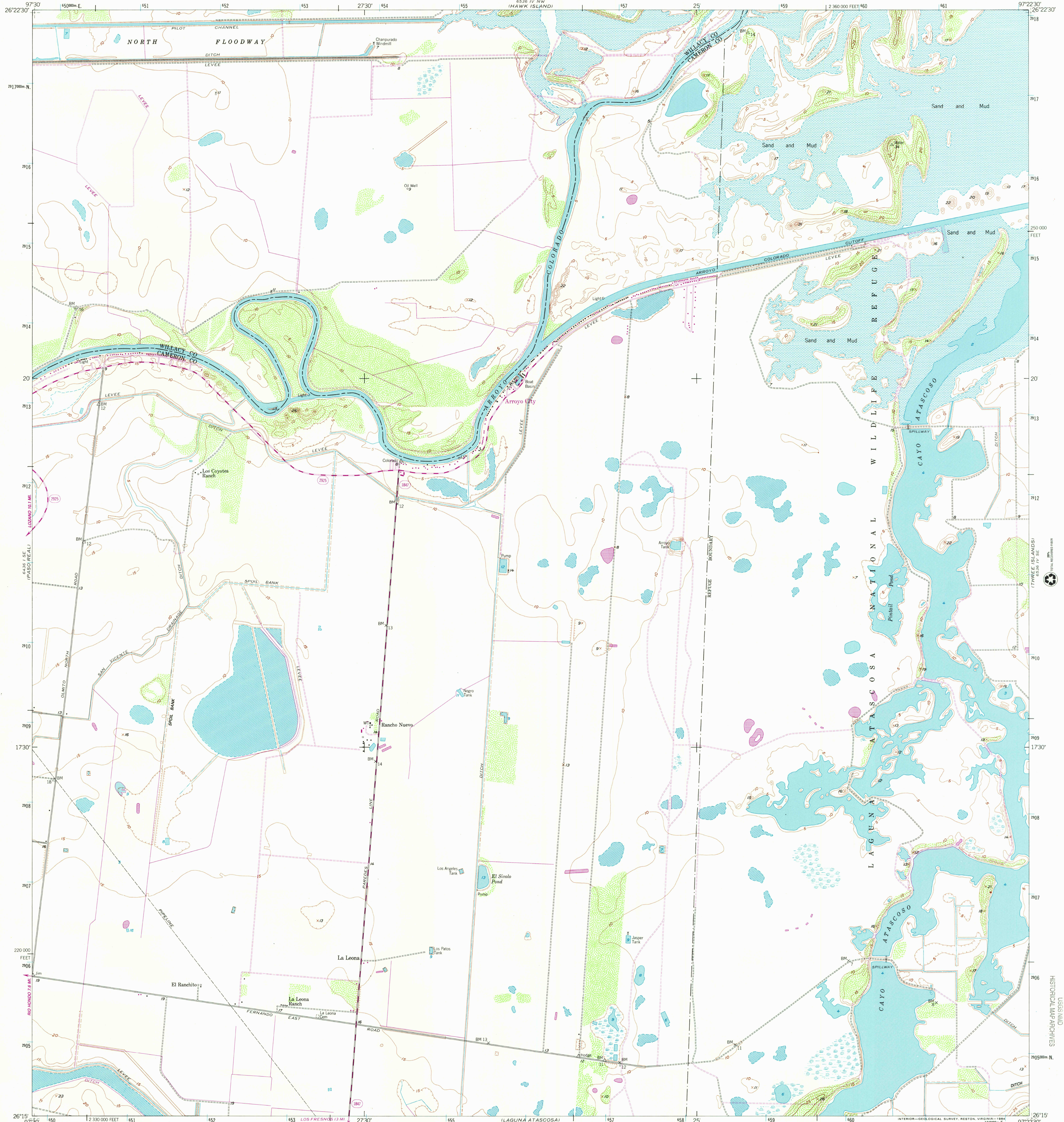
54° 15' N  
(WILLIAMS)



U.S. DEPARTMENT OF THE INTERIOR  
U.S. GEOLOGICAL SURVEY

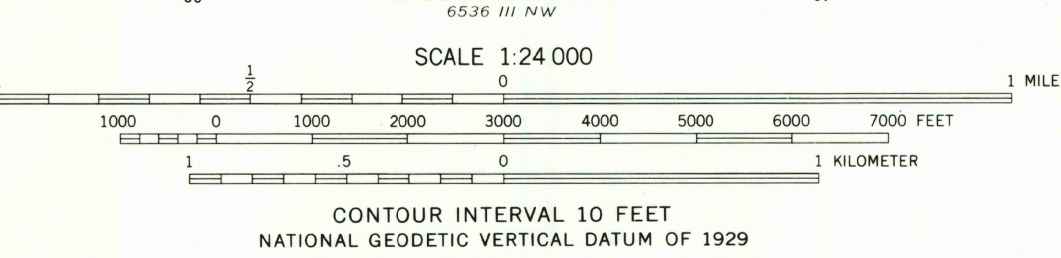
LA LEONA QUADRANGLE  
TEXAS  
7.5 MINUTE SERIES (TOPOGRAPHIC)  
SW/4 LA LEONA 15' QUADRANGLE

55° 15' N  
(GREEN ISLAND)



Maped, edited, and published by the Geological Survey  
Control by USGS and NOS/NOAA  
Culture and drainage in part compiled by U.S. Coast and Geodetic Survey from aerial photographs taken 1950  
Topography from 1930 map by USGS, revised by planetable surveys 1955  
Polyconic projection, 1927 North American Datum  
10,000-foot grid based on Texas coordinate system, south zone  
1000-meter Universal Transverse Mercator grid ticks, zone 14, shown in blue  
Water stages in this area vary with meteorological conditions  
Approximate limits of occasional inundation shown by dashed blue lines where mean high water is undetermined for lack of visual evidence  
Dotted blue lines indicate the approximate limits of low water

UTM GRID AND 1982 MAGNETIC NORTH DECLINATION AT CENTER OF SHEET  
To place on the predicted North American Datum 1983 move the projection lines 33 meters south and 26 meters east as shown by dashed corner ticks  
There may be private inholdings within the boundaries of the National or State reservations shown on this map



ROAD CLASSIFICATION  
Medium-duty ——— Light-duty ———  
Unimproved dirt ———  
State Route ○

QUADRANGLE LOCATION

Revisions shown in purple and woodland compiled from aerial photographs taken 1980 and other source data  
This information not field checked. Map edited 1982

2697-132

LA LEONA, TEX.  
SW/4 LA LEONA 15' QUADRANGLE  
N2615-W9722.5/7.5

1955  
PHOTO REVISION 1982  
DMA 6536 IV SW-SERIES V982

RECEIVED  
SEP 3 0 1999  
USGS M&D  
HISTORICAL MAP ARCHIVES  
505015 5 0798 6  
B-57015-001-0-NEXT1