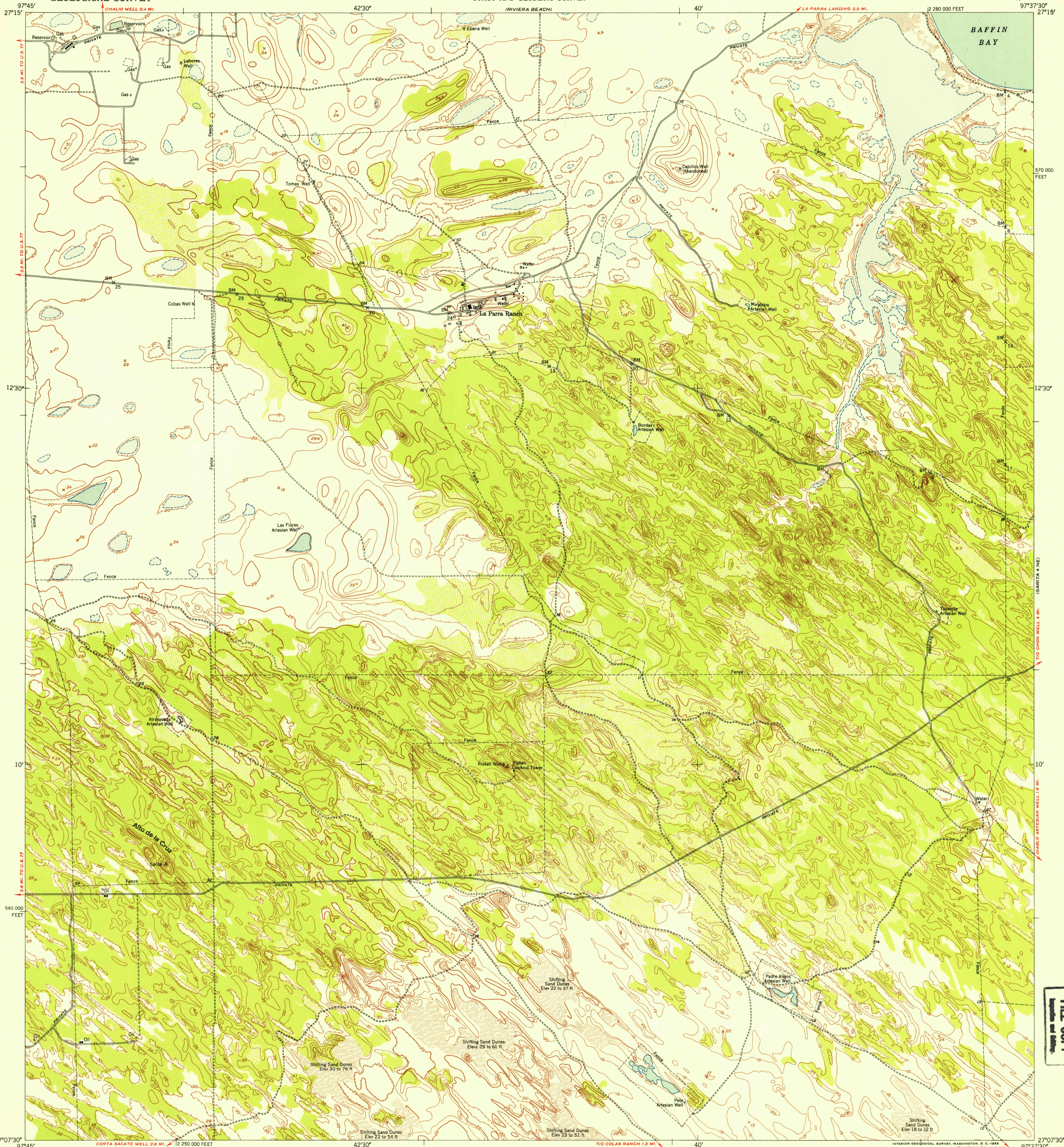
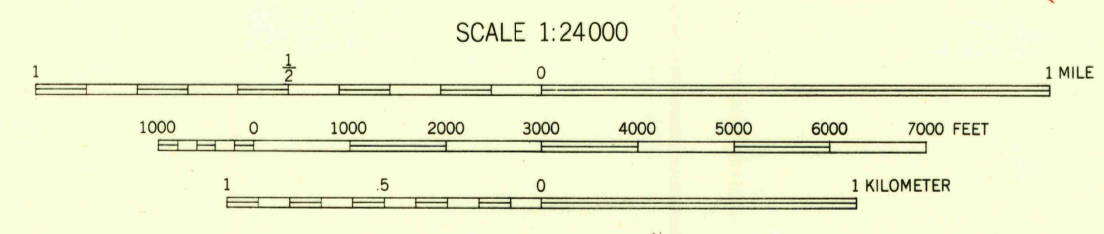
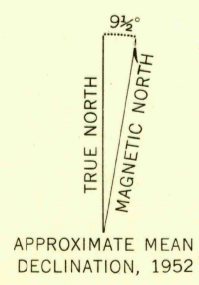


U. S. G. S.
FILE COPY
Inspection and Editing.

WALEBERG POINT



Mapped by the U.S. Coast and Geodetic Survey
Edited and published by the Geological Survey
Control by US&GS
Culture and drainage in part compiled from
aerial photographs taken 1948
Topography by plane-table surveys 1949-1950. Field check 1952
Polyconic projection. 1927 North American datum
10,000 foot grid based on Texas coordinate system,
south zone
Water stages in this area vary with meteorological conditions
Approximate limits of occasional inundation shown by dashed blue lines
where mean high water is undetermined for lack of visual evidence
Dotted blue lines indicate the approximate limits of low water



CONTOUR INTERVAL 5 FEET
DATUM IS MEAN SEA LEVEL
SHORELINE SHOWN REPRESENTS THE APPROXIMATE LINE OF MEAN HIGH WATER
THE MEAN RANGE OF TIDE IS LESS THAN 1/4 FOOT



ROAD CLASSIFICATION

Heavy-duty	4 LANE 16 LANE	Light-duty
Medium-duty	4 LANE 16 LANE	Unimproved dirt

U. S. Route State Route

LA PARRA RANCH, TEXAS
N2707.5-W9737.5/7.5

THIS MAP COMPLIES WITH NATIONAL MAP ACCURACY STANDARDS
FOR SALE BY U. S. GEOLOGICAL SURVEY, FEDERAL CENTER, DENVER, COLORADO OR WASHINGTON 25, D. C.
A FOLDER DESCRIBING TOPOGRAPHIC MAPS AND SYMBOLS IS AVAILABLE ON REQUEST

1952

JUL 15 1953