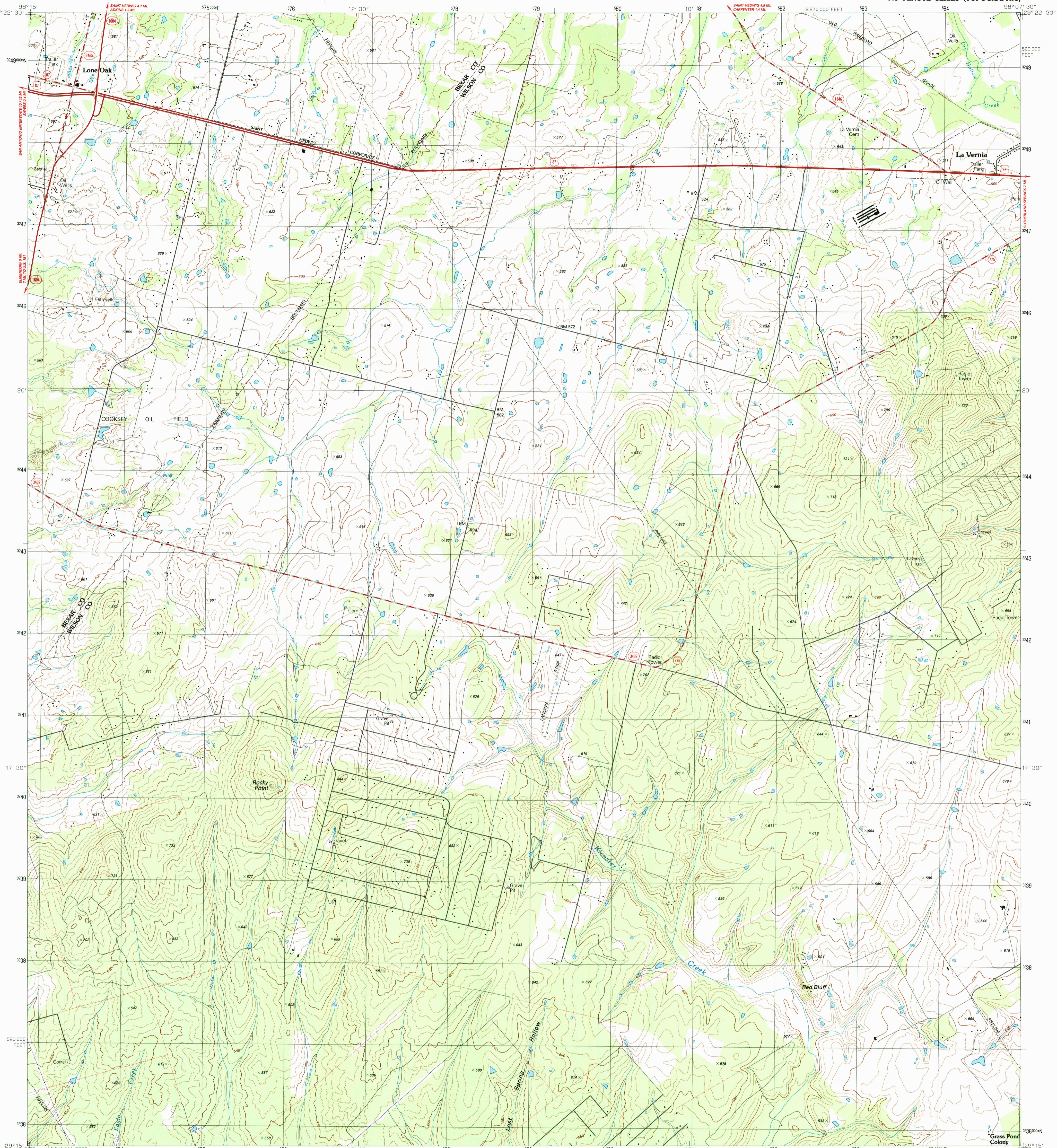
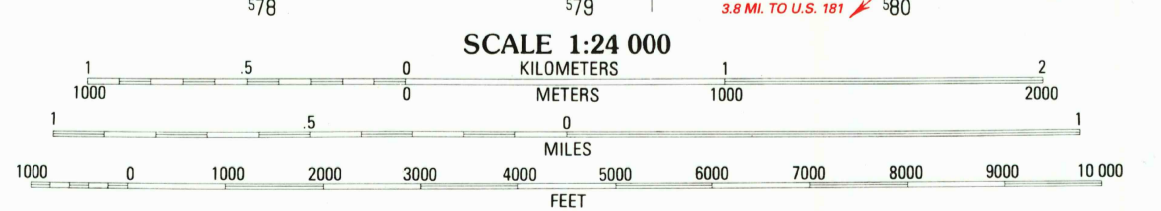
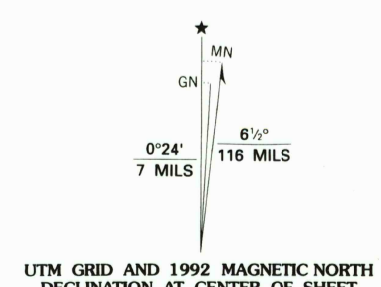


DEPARTMENT OF THE INTERIOR
UNITED STATES GEOLOGICAL SURVEY

LA VERNIA SW QUADRANGLE
TEXAS
7.5 MINUTE SERIES (TOPOGRAPHIC)



Produced by the United States Geological Survey
Control by USGS, NOS/NOAA and USCE
Compiled by Defense Mapping Agency from aerial photographs taken 1956. Restored from aerial photographs taken 1986. Field checked 1987. Map edited 1992.
North American Datum of 1927 (NAD 27). Projection and 10 000-foot grid ticks: Texas Coordinate System south central zone. (Lambert Conformal Conic)
1 000-meter Universal Transverse Mercator grid, zone 14
The difference between NAD 27 and North American Datum of 1983 (NAD 83) for 7.5 minute intersections is given in USGS Bulletin 1875. The NAD 83 is shown by dashed corner ticks
Fine red dashed lines indicate selected fence and field lines where generally visible on aerial photographs. This information is unchecked



SCALE 1:24 000
CONTOUR INTERVAL 10 FEET
NATIONAL GEODETIC VERTICAL DATUM OF 1929
TO CONVERT FEET TO METERS MULTIPLY BY 0.3048
TO CONVERT METERS TO FEET MULTIPLY BY 3.2808

THIS MAP COMPLIES WITH NATIONAL MAP ACCURACY STANDARDS
FOR SALE BY U.S. GEOLOGICAL SURVEY
DENVER, COLORADO 80225 OR RESTON, VIRGINIA 22092
A FOLDER DESCRIBING TOPOGRAPHIC MAPS AND SYMBOLS IS AVAILABLE ON REQUEST



2998-142

1	2	3	1 Martinez
2	3	4	2 Saint Hedwig
3	4	5	3 New Berlin
4	5	6	4 Elmendorf
5	6	7	5 La Vernia
6	7	8	6 Sasapasco
7	8		7 Florenceville
8			8 Marcellinas Hills

ADJOINING 7.5' QUADRANGLE NAMES

ROAD CLASSIFICATION

Primary highway, hard surface Light-duty road, hard or improved surface
Secondary highway, hard surface Unimproved road
Interstate Route U. S. Route State Route



LA VERNIA SW, TEX.
29098-C2-TF-024
1992
DMA 6342 I SW-SERIES V882