

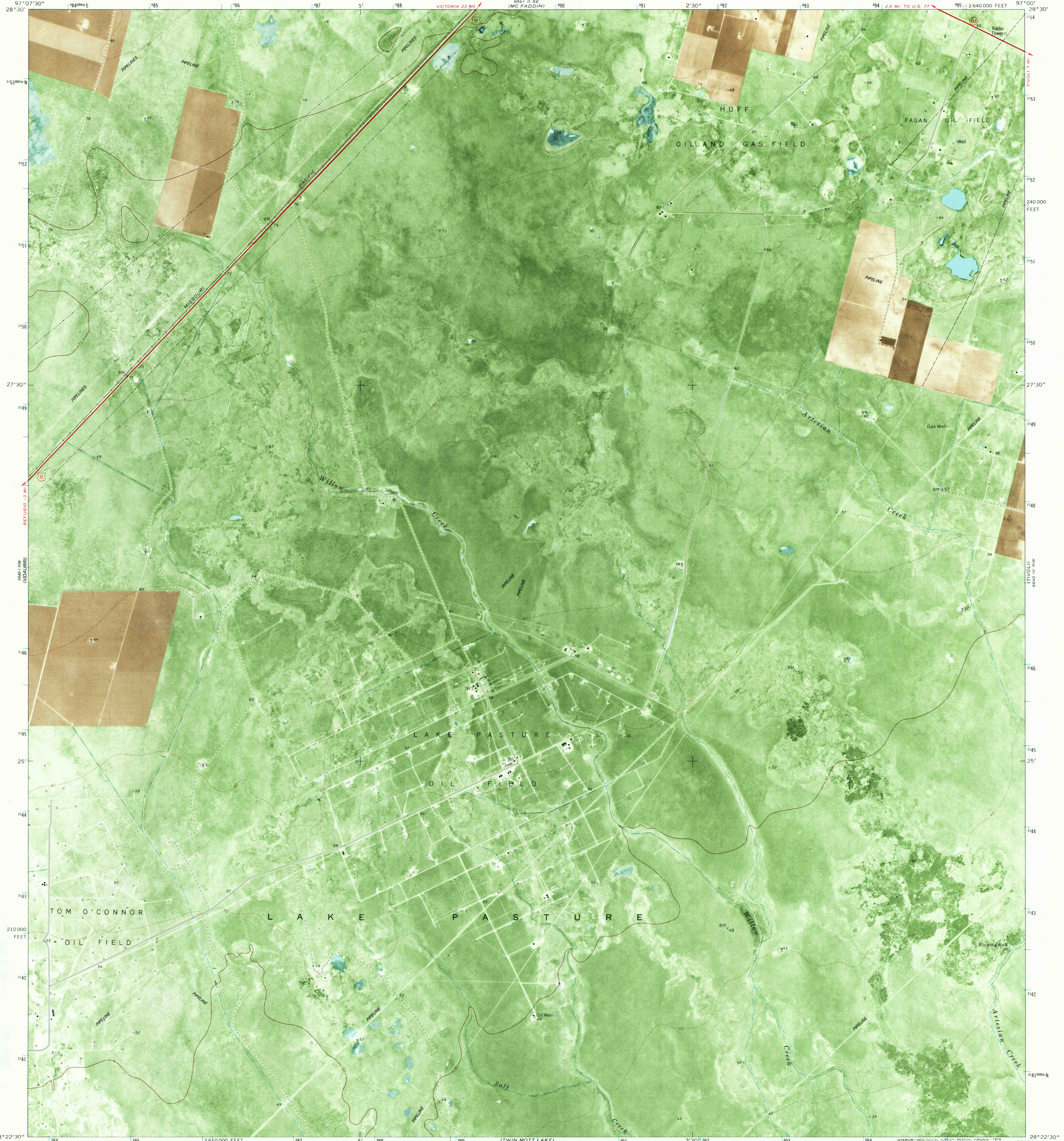
6541 II SE  
(MC FADDIN)

UNITED STATES  
DEPARTMENT OF THE INTERIOR  
GEOLOGICAL SURVEY

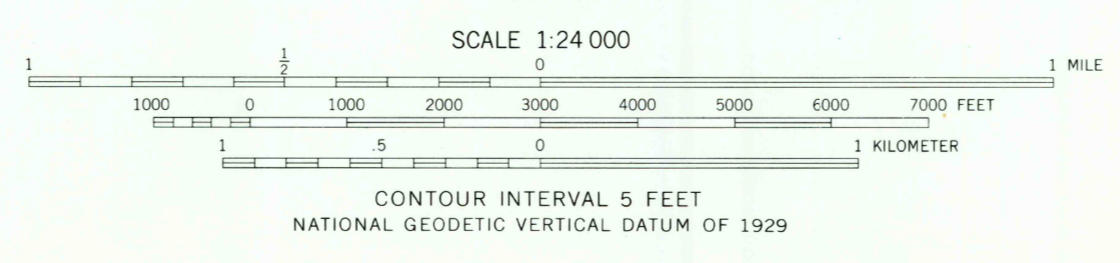
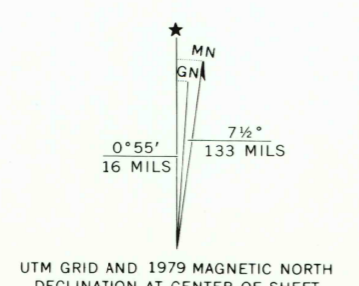


LAKE PASTURE QUADRANGLE  
TEXAS—REFUGIO CO.  
7.5 MINUTE SERIES ORTHOPHOTOMAP (TOPOGRAPHIC)  
NE4 VIDARI 15' QUADRANGLE  
NE14 VIDARI 15' QUADRANGLE

6541 II SW  
(BLOOMINGTON)



Mapped, edited, and published by the Geological Survey  
Control by USGS and NOS/NOAA  
Topography by photogrammetric methods from aerial  
photographs taken 1972. Orthophoto from aerial photograph  
taken 1972. Field checked 1974. Map edited 1979  
Projection and 10,000-foot grid ticks: Texas coordinate  
system, south central zone (Lambert conformal conic)  
1000-meter Universal Transverse Mercator grid ticks,  
zone 14, shown in blue. 1927 North American datum



ROAD CLASSIFICATION	
Primary highway, hard surface	Light-duty road, hard or improved surface
Secondary highway, hard surface	Unimproved road
Interstate Route	U. S. Route
	State Route

USGS  
Historical File  
Topographic Division  
LAKE PASTURE, TEX.  
NE4 VIDARI 15' QUADRANGLE  
N2822.5—W97007.5  
1979  
AMS 6540 I NE—SERIES V882

THIS MAP COMPLIES WITH NATIONAL MAP ACCURACY STANDARDS  
FOR SALE BY U. S. GEOLOGICAL SURVEY, DENVER, COLORADO 80225 OR RESTON, VIRGINIA 22092  
A FOLDER DESCRIBING TOPOGRAPHIC MAPS AND SYMBOLS IS AVAILABLE ON REQUEST

2897-144

1500