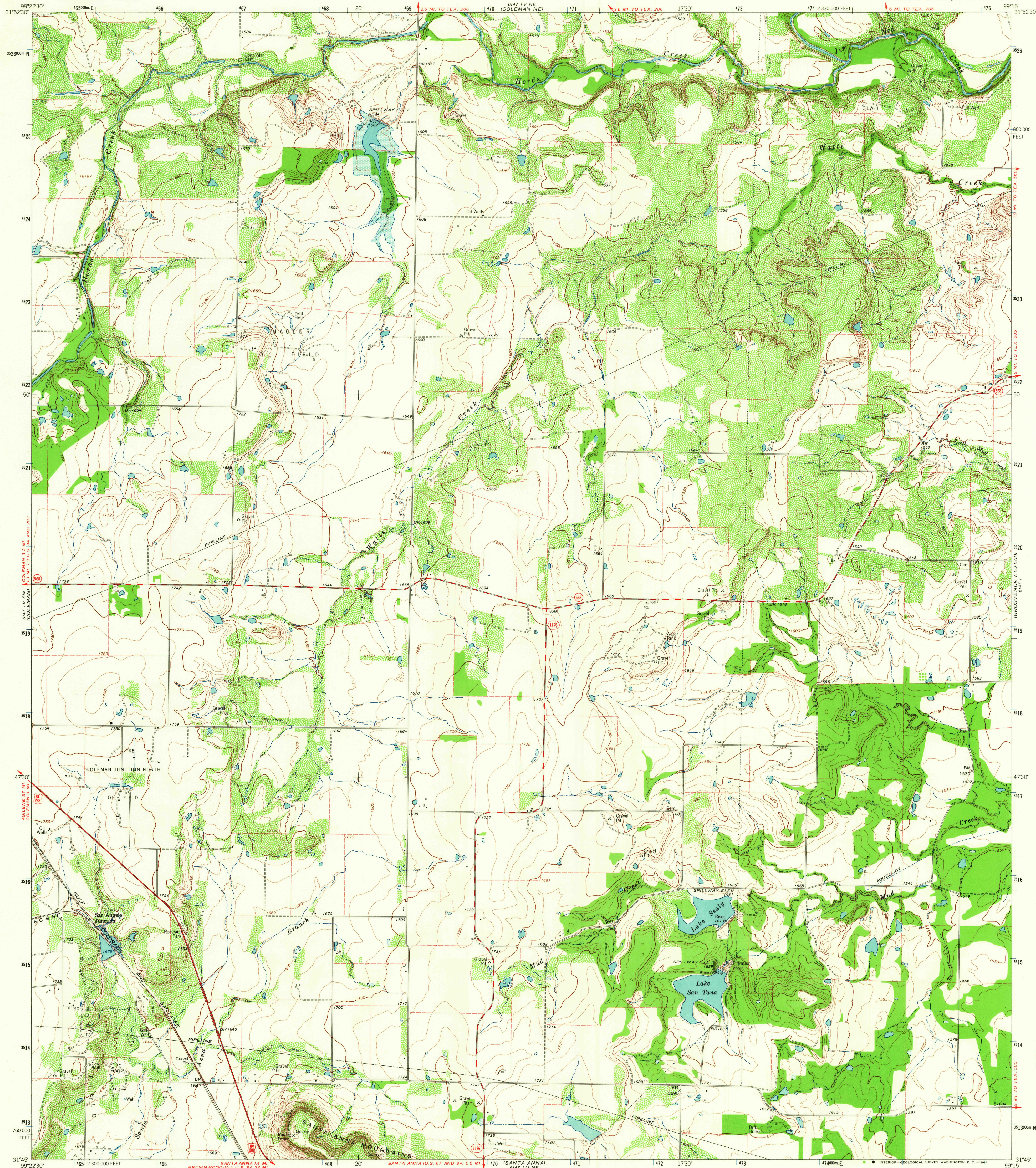


UNITED STATES
DEPARTMENT OF THE INTERIOR
GEOLOGICAL SURVEY

LAKE SAN TANA QUADRANGLE
TEXAS-COLEMAN CO.
7.5 MINUTE SERIES (TOPOGRAPHIC)



Mapped, edited, and published by the Geological Survey

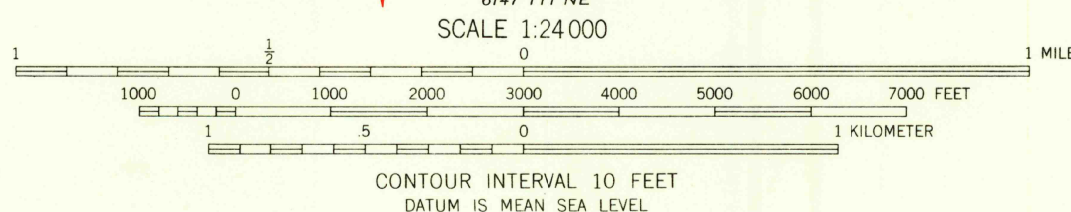
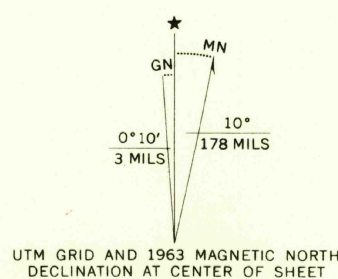
Control by USGS and USC&GS

Topography by photogrammetric methods from aerial photographs taken 1961. Field checked 1963

Polyconic projection. 1927 North American datum
10,000-foot grid based on Texas coordinate system, central zone
1000-meter Universal Transverse Mercator grid ticks,
zone 14, shown in blue

Area covered by dashed light-blue pattern is subject
to controlled inundation

Fine red dashed lines indicate selected fence lines



ROAD CLASSIFICATION

| | |
|-------------|-----------------|
| Heavy-duty | Light-duty |
| Medium-duty | Unimproved dirt |
| U.S. Route | State Route |

U.S.G.S. FILE COPY TOPOGRAPHIC DIVISION

LAKE SAN TANA, TEX.
N3145-W9915/7.5
1963

AMS 6147 IV SE-SERIES V882

RETURN TO:
USGS AND HISTORICAL MAP ARCHIVES

SEP 2 4 1964

2456