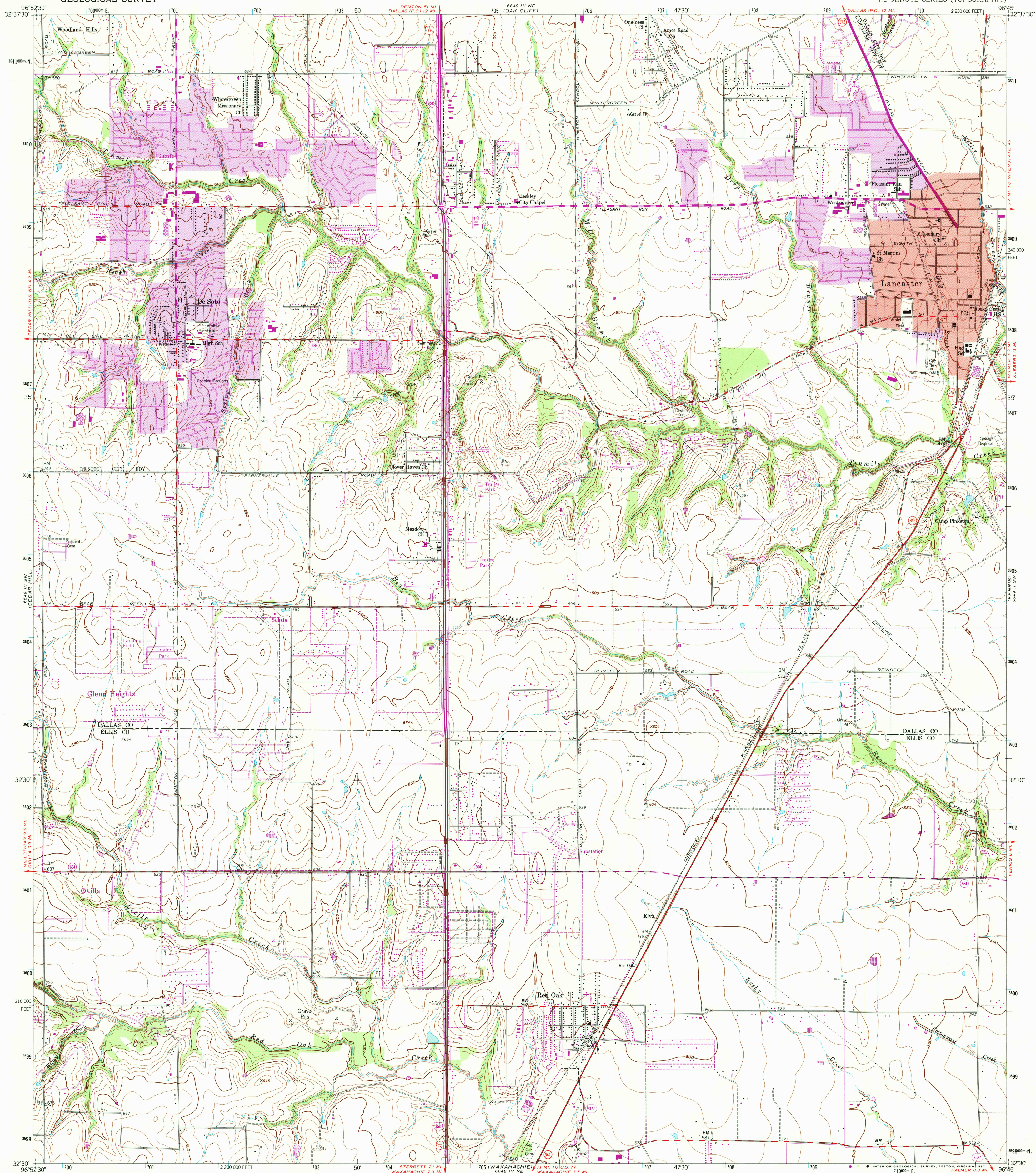


UNITED STATES
DEPARTMENT OF THE INTERIOR
GEOLOGICAL SURVEY

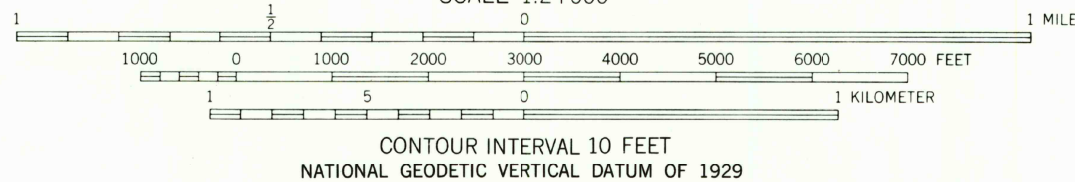
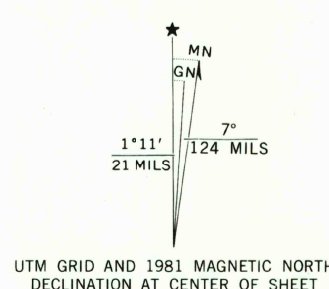
LANCASTER QUADRANGLE
TEXAS
7.5 MINUTE SERIES (TOPOGRAPHIC)



Mapped, edited, and published by the Geological Survey
Control by USGS and NOS/NOAA

Topography by photogrammetric methods from aerial
photographs taken 1956. Field checked 1959
Polyconic projection. 10,000-foot grid ticks based on Texas
coordinate system, north central zone. 1000-meter Universal
Transverse Mercator grid ticks, zone 14, shown in blue
1927 North American Datum. To place on the predicted North
American Datum 1983 move the projection lines 11 meters south
and 26 meters east as shown by dashed corner ticks
Red tint indicates area in which only landmark buildings are shown

Revisions shown in purple and woodland compiled
from aerial photographs taken 1978 and other sources.
This information not field checked. Map edited 1981
Purple tint indicates extension of urban areas

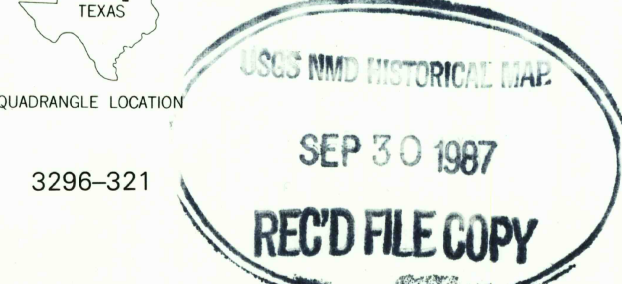


THIS MAP COMPLIES WITH NATIONAL MAP ACCURACY STANDARDS
FOR SALE BY U. S. GEOLOGICAL SURVEY, DENVER, COLORADO 80225, OR RESTON, VIRGINIA 22092
A FOLDER DESCRIBING TOPOGRAPHIC MAPS AND SYMBOLS IS AVAILABLE ON REQUEST



QUADRANGLE LOCATION

ROAD CLASSIFICATION
Heavy-duty ——— Light-duty ———
Medium-duty ——— Unimproved dirt ———
Interstate Route ——— U. S. Route ——— State Route ———



LANCASTER, TEX.
32096-E7-TF-024

1959
PHOTOREVISED 1981
DMA 6649 III SE-SERIES V882