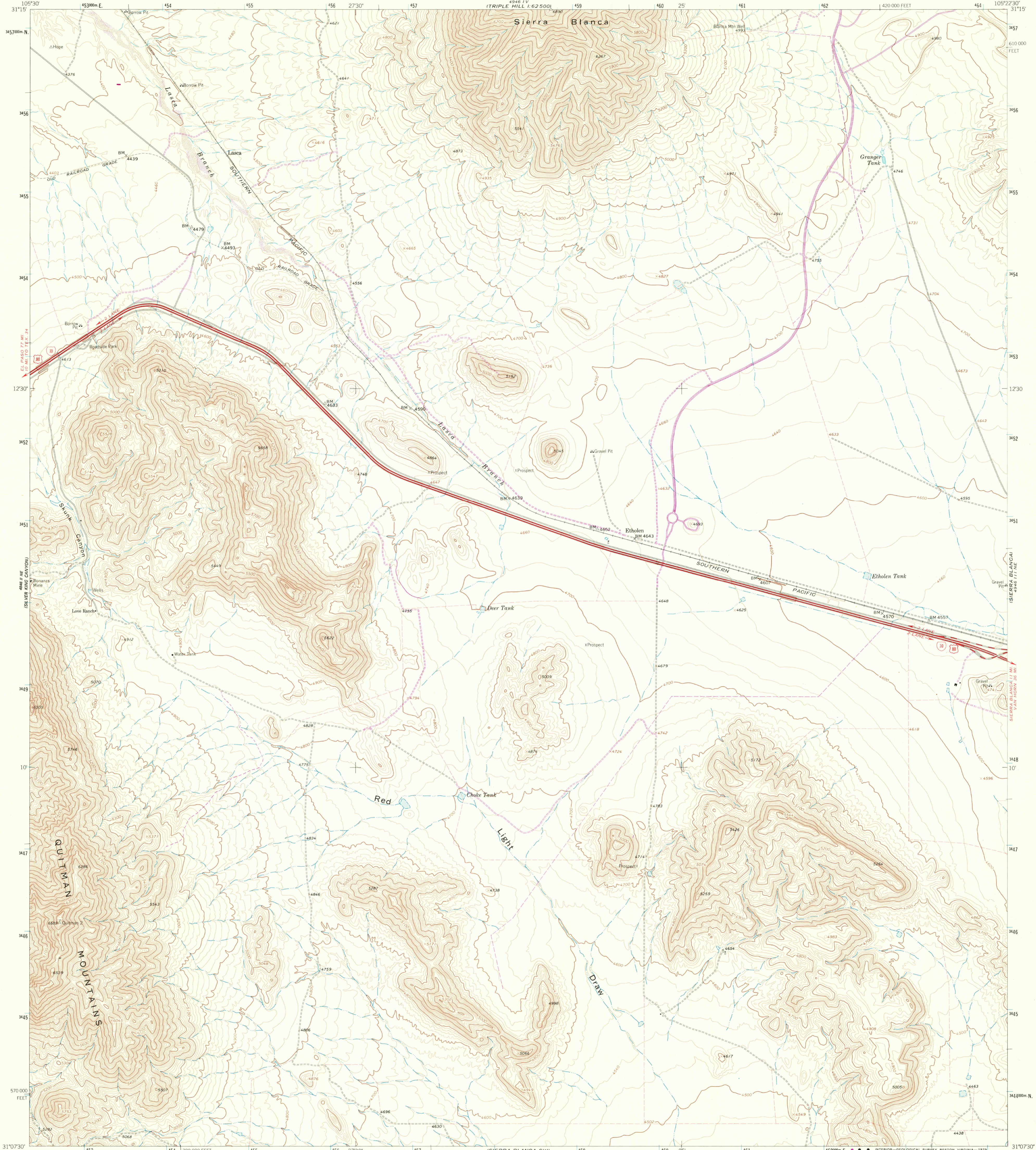


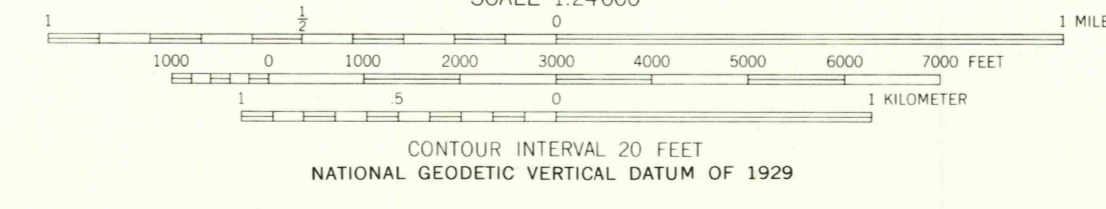
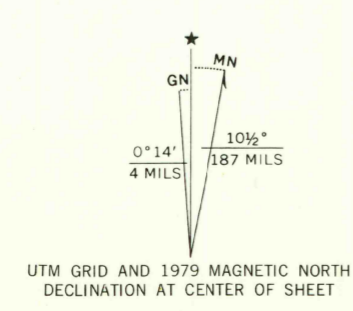
4946 1 V
TRIPLE HILL
1:62,500



Mapped, edited, and published by the Geological Survey

Control by USGS and USC&GS
Topography by photogrammetric methods from aerial photographs taken 1963. Field checked 1964
Polyconic projection. 1927 North American datum. 10,000-foot grid based on Texas coordinate system, central zone. 1000-meter Universal Transverse Mercator grid ticks, zone 13, shown in blue.
Fine red dashed lines indicate selected fence lines.

Revisions shown in purple compiled from aerial photographs taken 1976 and other source data. This information not field checked. Map edited 1979



ROAD CLASSIFICATION	
Primary highway, all weather, hard surface	Light-duty road, all weather, improved surface
Secondary highway, all weather, hard surface	Unimproved road, fair or dry weather
○ Interstate Route	□ U. S. Route
○ State Route	

THIS MAP COMPLIES WITH NATIONAL MAP ACCURACY STANDARDS
FOR SALE BY U. S. GEOLOGICAL SURVEY, DENVER, COLORADO 80225 OR RESTON, VIRGINIA 22092
A FOLDER DESCRIBING TOPOGRAPHIC MAPS AND SYMBOLS IS AVAILABLE ON REQUEST

3105-123

USGS
Historical File
Topographic Division

LASCA, TEX.
N3107.5-W10522.5/7.5
1964
PHOTOREVISED 1979
AMS 4946 111 NW-SERIES V882

NOV - 7 1979

1600