

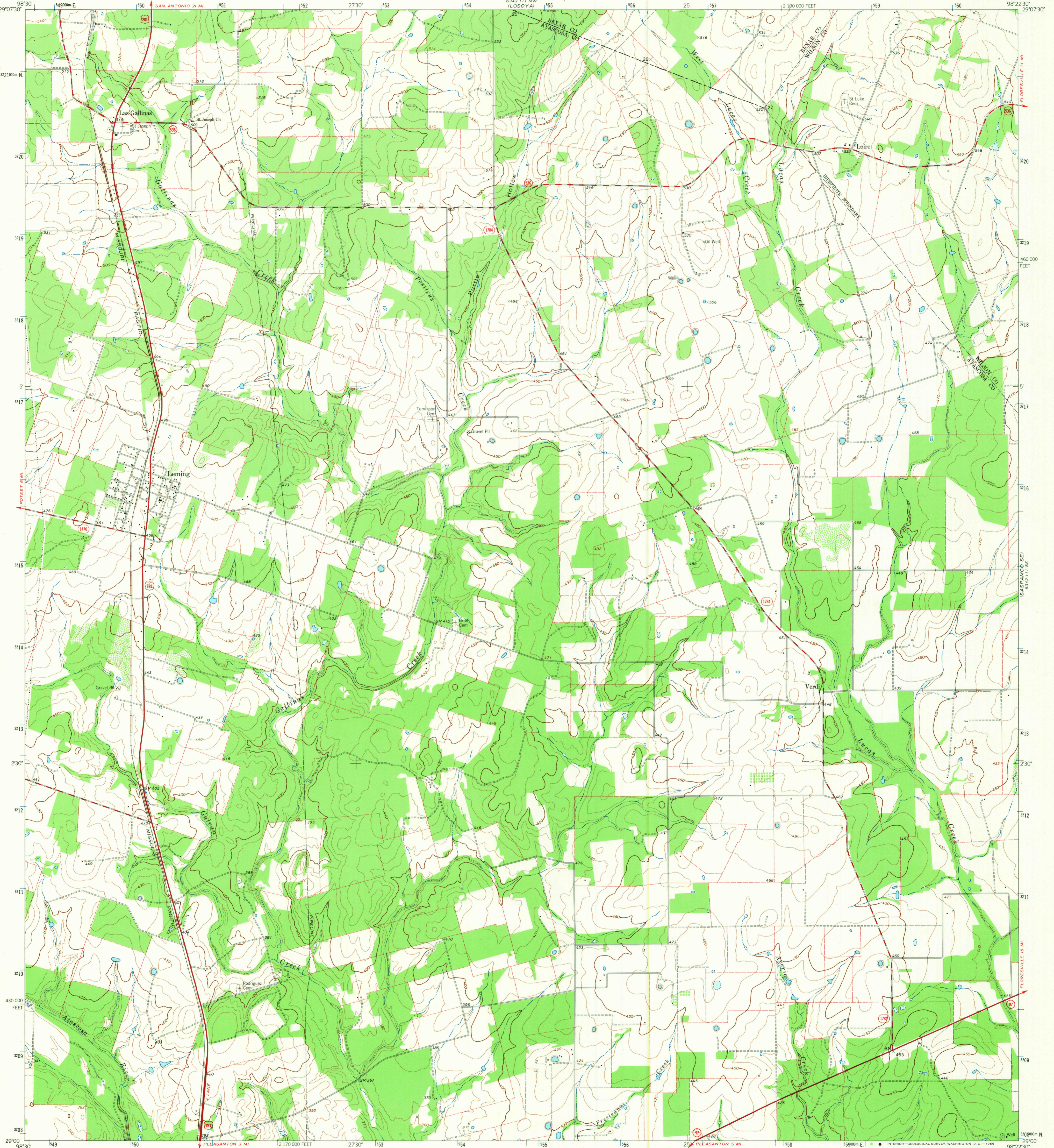
82°21'11" W
TERRACONIC

UNITED STATES
DEPARTMENT OF THE INTERIOR
GEOLOGICAL SURVEY

STATE OF TEXAS
TEXAS WATER DEVELOPMENT BOARD

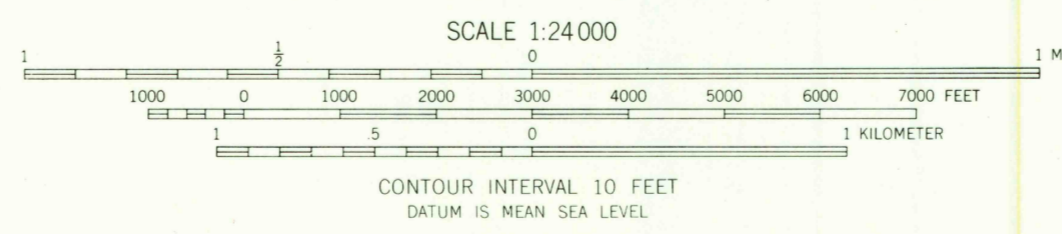
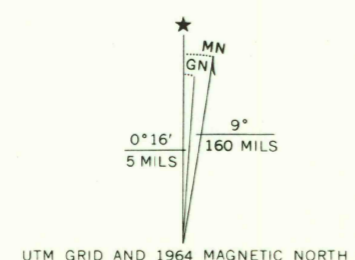
LEMING QUADRANGLE
TEXAS
7.5 MINUTE SERIES (TOPOGRAPHIC)

83°11'11" E
ISAS-54-AMCO



Mapped, edited, and published by the Geological Survey

Control by USGS and USC&GS
 Topography by photogrammetric methods from aerial photographs taken 1963. Field checked 1964
 Polyconic projection. 1927 North American datum. 10,000-foot grid based on Texas coordinate system, south central zone. 1000-meter Universal Transverse Mercator grid ticks, zone 14, shown in blue.
 Fine red dashed lines indicate selected fence lines.



CONTOUR INTERVAL 10 FEET
DATUM IS MEAN SEA LEVEL



U.S.G.S.
FILE COPY
 TOPOGRAPHIC DIVISION

ROAD CLASSIFICATION
 Heavy-duty ——— Light-duty ———
 Medium-duty ——— Unimproved dirt ———
 U.S. Route State Route

THIS MAP COMPLIES WITH NATIONAL MAP ACCURACY STANDARDS
 FOR SALE BY U.S. GEOLOGICAL SURVEY, DENVER, COLORADO 80225, OR WASHINGTON, D. C. 20242
 A FOLDER DESCRIBING TOPOGRAPHIC MAPS AND SYMBOLS IS AVAILABLE ON REQUEST

LEMING, TEX.
 N2900-W9822 5/7.5
 1964

2205
 SEP 12 1966

AMS 6342 111 SW - SERIES V882