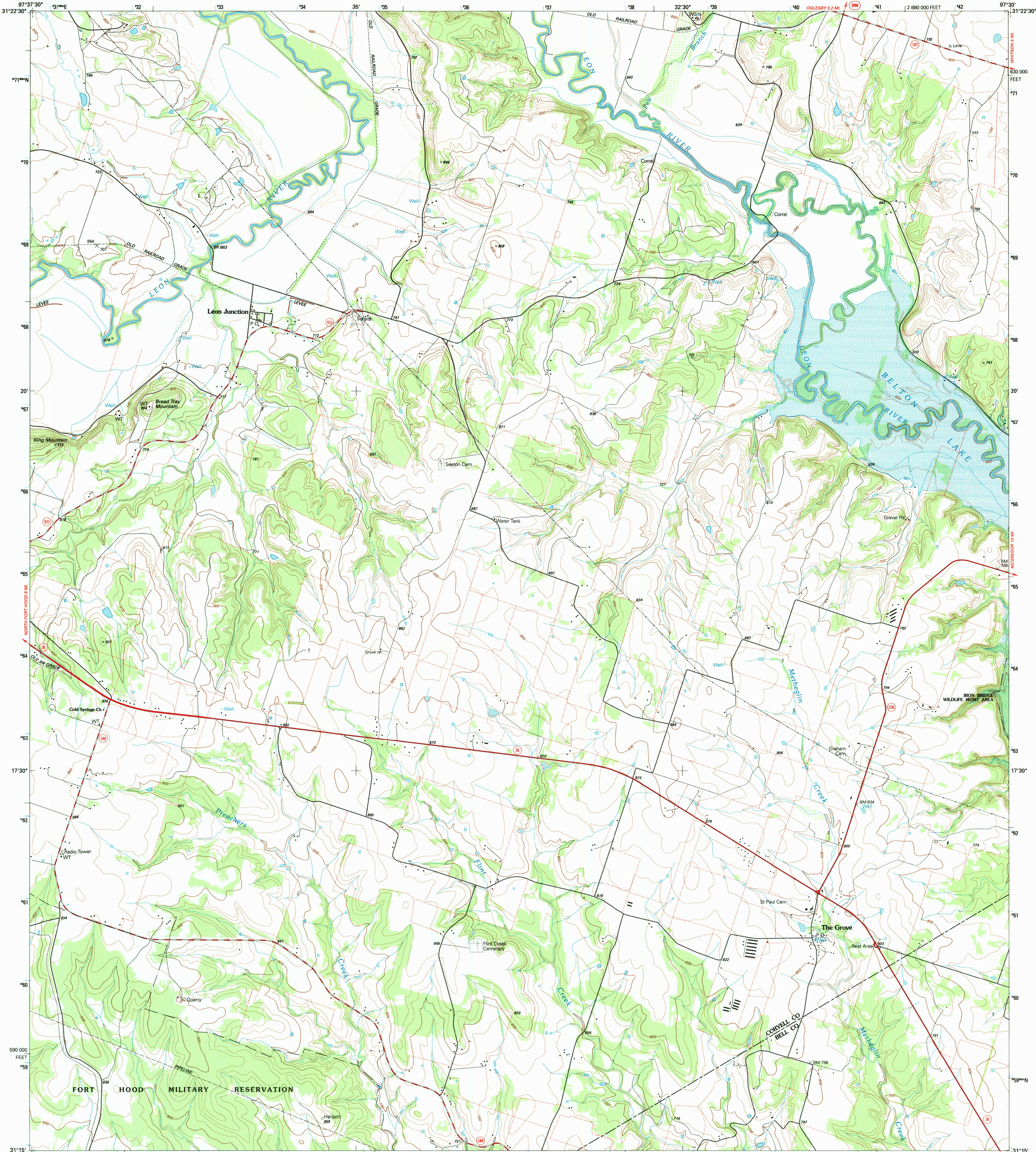
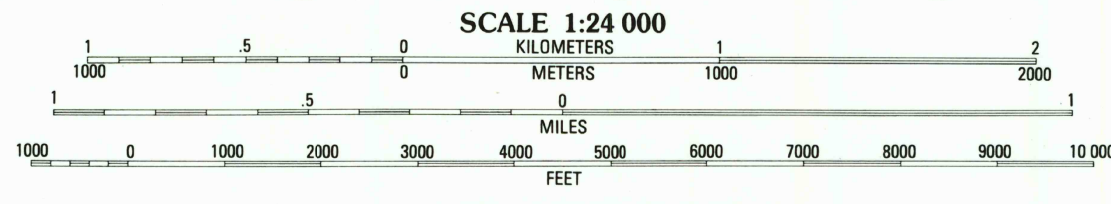
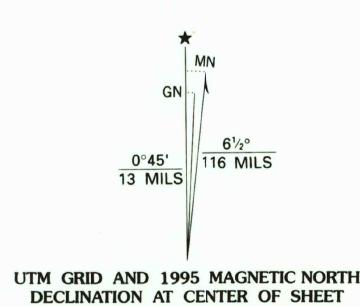


UNITED STATES
DEPARTMENT OF THE INTERIOR
GEOLOGICAL SURVEY

LEON JUNCTION QUADRANGLE
TEXAS
7.5-MINUTE SERIES (TOPOGRAPHIC)



Produced by the United States Geological Survey
Control by USGS and NOS/NOAA
Compiled from aerial photographs taken 1990 and other sources
Field checked 1991. Map edited 1995
North American Datum of 1927 (NAD 27). Projection and
10 000-foot ticks. Texas Coordinate System, central zone
(Lambert Conformal Conic)
Blue 1000-meter Universal Transverse Mercator ticks, zone 14
North American Datum of 1983 (NAD 83) is shown by dashed
corner ticks. The values of the shift between NAD 27 and NAD 83
for 7.5-minute intersections are obtainable from National Geodetic
Survey NADCON software
There may be private inholdings within the boundaries of the
National or State reservations shown on this map
Fine red dashed lines indicate selected fence and field lines where
generally visible on aerial photographs. This information is
unchecked
Areas covered by light-blue pattern are subject to controlled inundation



CONTOUR INTERVAL 20 FEET
SUPPLEMENTARY CONTOUR INTERVAL 10 FEET
NATIONAL GEODETTIC VERTICAL DATUM OF 1929
TO CONVERT FEET TO METERS MULTIPLY BY 0.3048
TO CONVERT METERS TO FEET MULTIPLY BY 3.2808

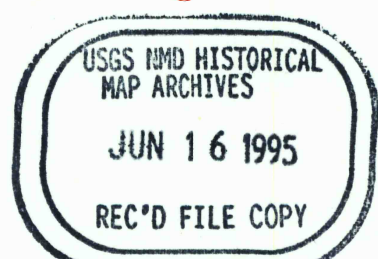
THIS MAP COMPLIES WITH NATIONAL MAP ACCURACY STANDARDS
FOR SALE BY U.S. GEOLOGICAL SURVEY
DENVER, COLORADO 80225 OR RESTON, VIRGINIA 22092
A FOLDER DESCRIBING TOPOGRAPHIC MAPS AND SYMBOLS IS AVAILABLE ON REQUEST



QUADRANGLE LOCATION			
1	2	3	1 Gatesville East
4	5	6	2 Oglesby
7	8	9	3 McGregor
			4 North Fort Hood
			5 Eagle Springs
			6 Post Oak Mountain
			7 Bland
			8 Moffat

ADJOINING 7.5 QUADRANGLE NAMES

ROAD CLASSIFICATION
Primary highway, hard surface
Secondary highway, hard surface
Unimproved road
Interstate Route U. S. Route State Route



LEON JUNCTION, TX
31097-C5-TF-024
1995
DMA 6446 I SE-SERIES V882