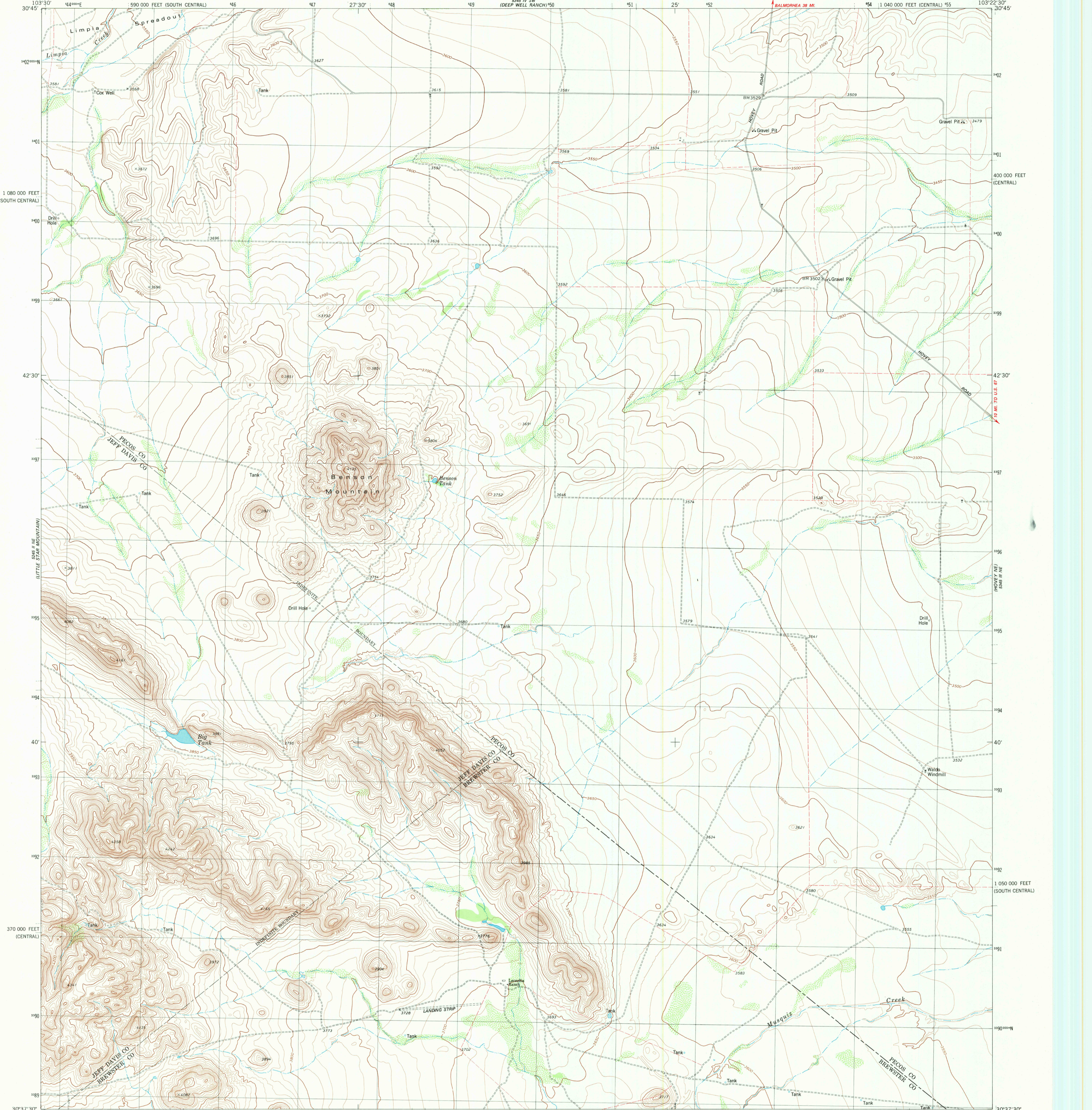
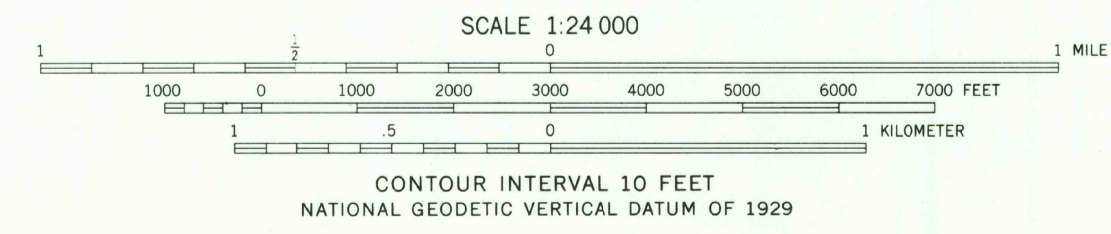
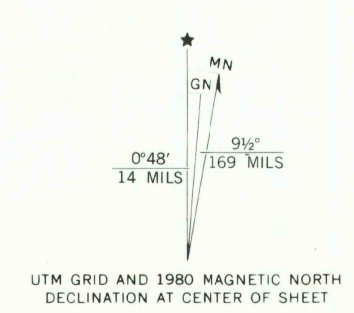


UNITED STATES
DEPARTMENT OF THE INTERIOR
GEOLOGICAL SURVEY

LEONCITA RANCH QUADRANGLE
TEXAS
7.5 MINUTE SERIES (TOPOGRAPHIC)



Mapped, edited, and published by the Geological Survey
Control by USGS and NOS/NOAA
Topography by photogrammetric methods from aerial photographs taken 1974. Field checked 1975. Map edited 1980
Projection: Texas coordinate system, central zone (Lambert conformal conic)
10,000-foot grid ticks based on Texas coordinate system, central and south central zones
1000-meter Universal Transverse Mercator grid, zone 13 1927 North American datum
To place on the predicted North American Datum 1983 move the projection lines 13 meters south and 43 meters east as shown by dashed corner ticks
Fine red dashed lines indicate selected fence lines



CONTOUR INTERVAL 10 FEET
NATIONAL GEODETIC VERTICAL DATUM OF 1929



ROAD CLASSIFICATION

Primary highway, hard surface	Light-duty road, hard or improved surface
Secondary highway, hard surface	Unimproved road
Interstate Route	U. S. Route
	State Route

THIS MAP COMPLIES WITH NATIONAL MAP ACCURACY STANDARDS
FOR SALE BY U. S. GEOLOGICAL SURVEY, DENVER, COLORADO 80225, OR RESTON, VIRGINIA 22092
A FOLDER DESCRIBING TOPOGRAPHIC MAPS AND SYMBOLS IS AVAILABLE ON REQUEST

3003-423

USGS
HISTORICAL FILE
NATIONAL MAPPING DIVISION

LEONCITA RANCH, TEX.
N3037.5-W10322.5/7.5
1980
DMA 5345 III NW-SERIES V882

JUL 21 1981
1850