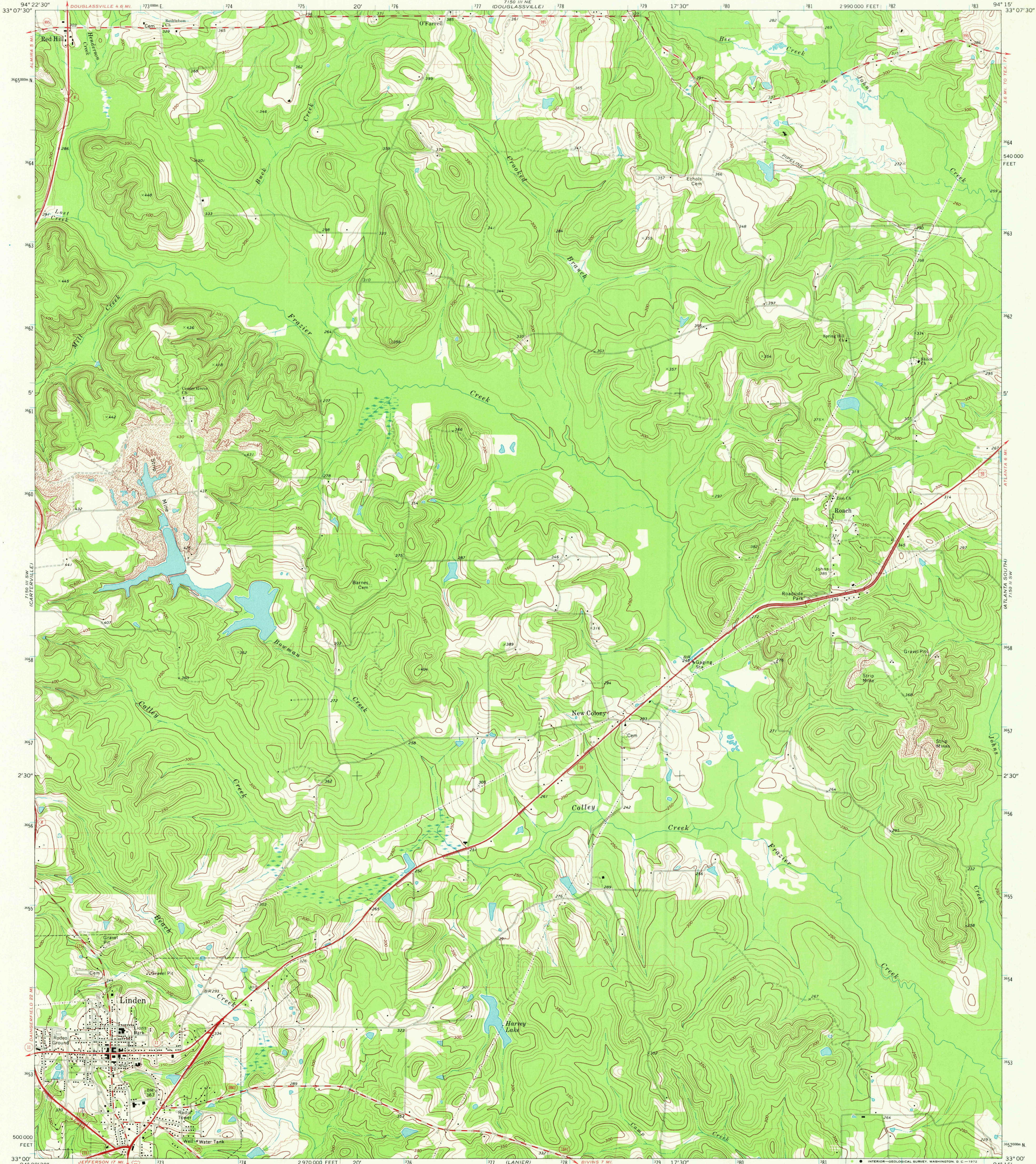


UNITED STATES
DEPARTMENT OF THE INTERIOR
GEOLOGICAL SURVEY

LINDEN QUADRANGLE
TEXAS—CASS CO.
7.5 MINUTE SERIES (TOPOGRAPHIC)
SE 1/4 LINDEN 15' QUADRANGLE



Mapped, edited, and published by the Geological Survey

Control by USGS and USC&GS

Topography by photogrammetric methods from aerial

photographs taken 1968. Field checked 1969

Polyconic projection. 1927 North American datum

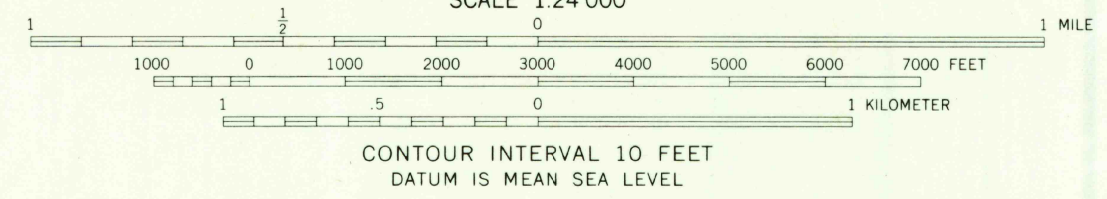
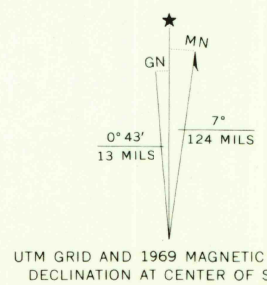
10,000-foot grid based on Texas coordinate system,

north central zone

1000-meter Universal Transverse Mercator grid ticks,

zone 15, shown in blue

Fine red dashed lines indicate selected fence lines



ROAD CLASSIFICATION	
Primary highway, all weather, hard surface	Light-duty road, all weather, improved surface
Secondary highway, all weather, hard surface	Unimproved road, fair or dry weather
U. S. Route	State Route

LINDEN, TEX. JUL 3 1972
SE 1/4 LINDEN 15' QUADRANGLE
N3300-W9415/7.5
2650

1969

AMS 7150 III SE—SERIES V882

USGS
HISTORICAL FILE
TOPOGRAPHIC DIVISION

THIS MAP COMPLIES WITH NATIONAL MAP ACCURACY STANDARDS
FOR SALE BY U. S. GEOLOGICAL SURVEY, DENVER, COLORADO 80225, OR WASHINGTON, D. C. 20242
A FOLDER DESCRIBING TOPOGRAPHIC MAPS AND SYMBOLS IS AVAILABLE ON REQUEST