

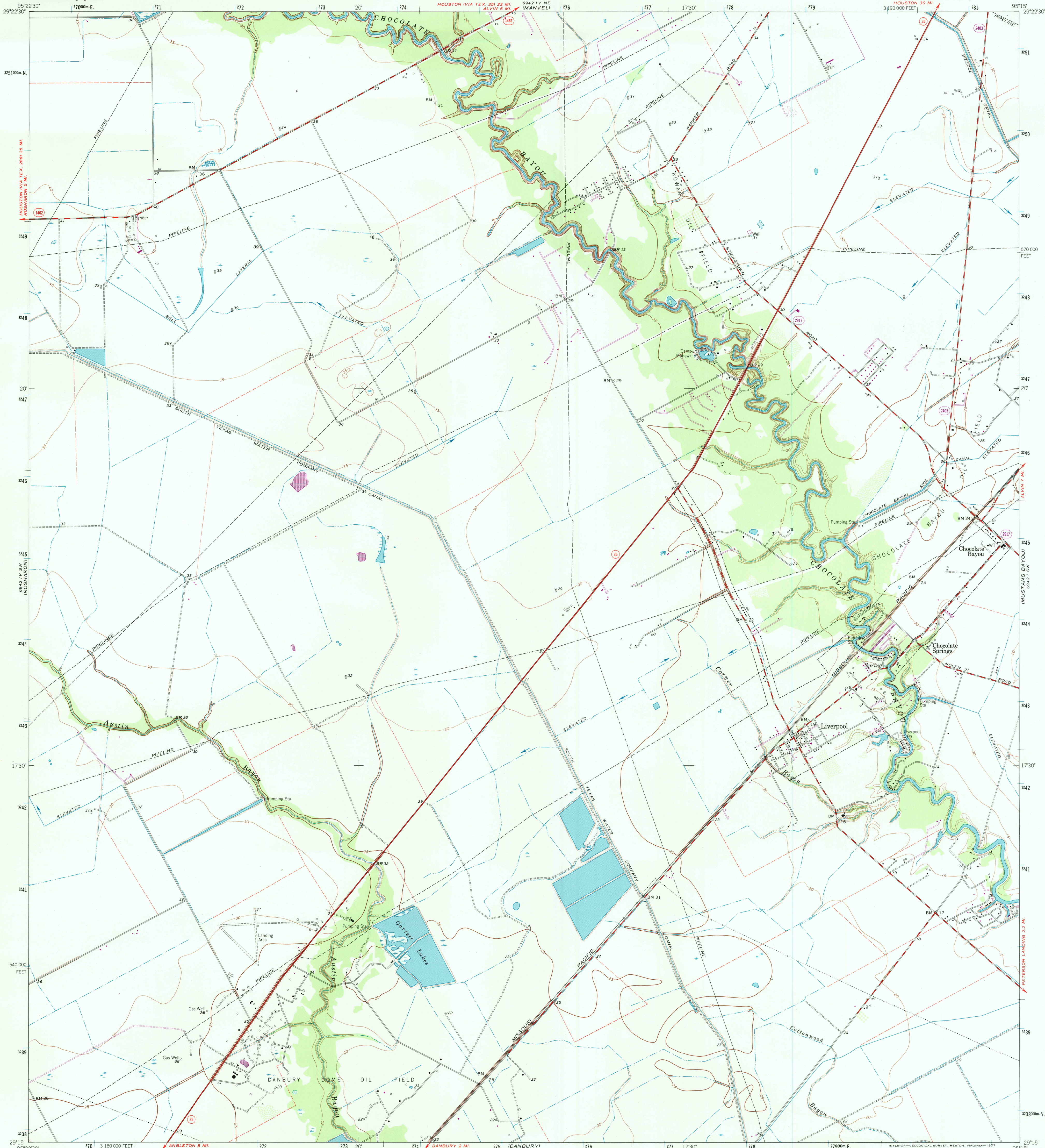
6942 IV NE  
6942 IV NW



U.S. DEPARTMENT OF THE INTERIOR  
U.S. GEOLOGICAL SURVEY

LIVERPOOL QUADRANGLE  
TEXAS-BRAZORIA CO.  
7.5 MINUTE SERIES (TOPOGRAPHIC)

6942 IV NW  
6942 IV NE

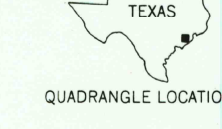
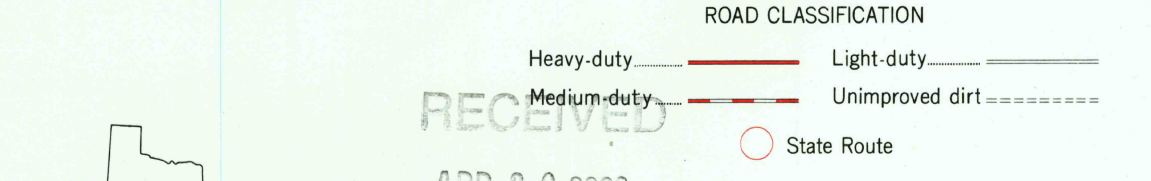
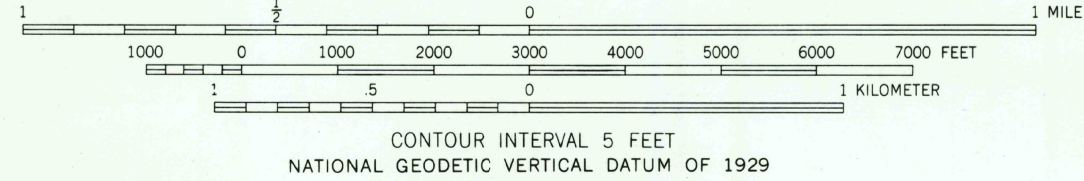
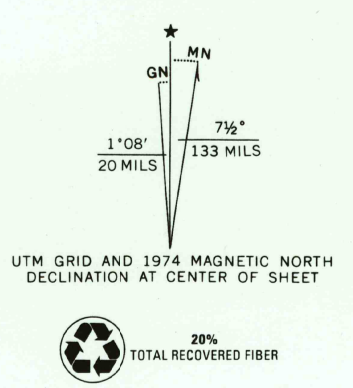


Mapped, edited, and published by the Geological Survey

Control by USGS, NOS/NOAA, USCE, and TVA  
Planimetry by photogrammetric methods from aerial photographs taken 1961. Topography from 1:24 000-scale AMS map of Chocolate Bayou quadrangle. Original map by photogrammetric methods and planetable surveys 1943. Revised 1963

Polyconic projection. 1927 North American datum  
10,000-foot grid based on Texas coordinate system, south central zone  
1000-meter Universal Transverse Mercator grid ticks, zone 15, shown in blue

Fine red dashed lines indicate selected fence lines  
Revisions shown in purple compiled from aerial photographs taken 1974. This information not field checked  
Contours not revised



RECEIVED  
APR 30 2000  
USGS M&D  
HISTORICAL MAP ARCHIVES

LIVERPOOL, TEX.  
N2915-W9515/7.5  
1963  
PHOTOREVISED 1974  
AMS 6942 IV SE-SERIES W82

THIS MAP COMPLIES WITH NATIONAL MAP ACCURACY STANDARDS  
FOR SALE BY U.S. GEOLOGICAL SURVEY, P.O. BOX 25286, DENVER, COLORADO 80225  
A FOLDER DESCRIBING TOPOGRAPHIC MAPS AND SYMBOLS IS AVAILABLE ON REQUEST

ISBN 0-607-51670-4  
9 780607 516708