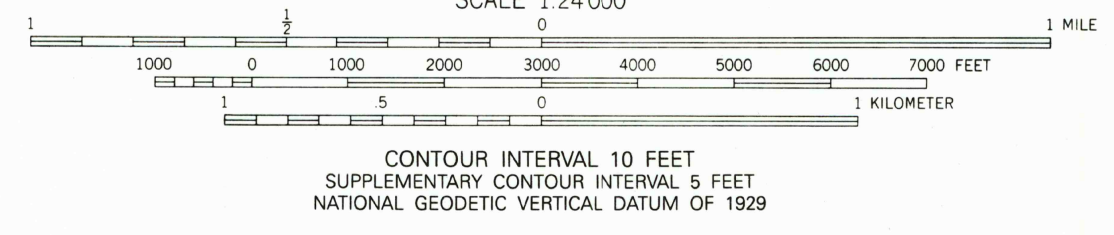
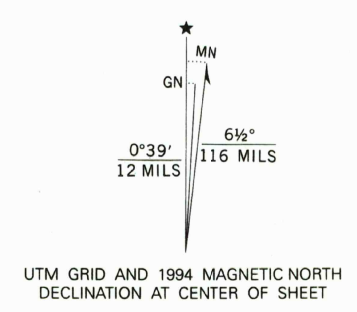


Produced by the United States Geological Survey  
in cooperation with Texas Water Development  
Board  
Control by USGS and NOS/NOAA  
Compiled from aerial photographs taken 1963. Revisions shown  
in purple compiled from aerial photographs taken 1986 and other  
sources and have been field checked. Map edited 1994. Conflicts  
may exist between some updated features and previously mapped  
contours  
North American Datum of 1927 (NAD 27). Projection and  
10,000-foot ticks - Texas Coordinate System, south central zone  
(Lambert Conformal Conic)  
Blue 1000-meter Universal Transverse Mercator ticks, zone 14  
North American Datum of 1983 (NAD 83) is shown by dashed  
corner ticks. The values of the shift between NAD 27 and NAD 83  
for 7.5-minute intersections are obtainable from National Geodetic  
Survey NADCON software

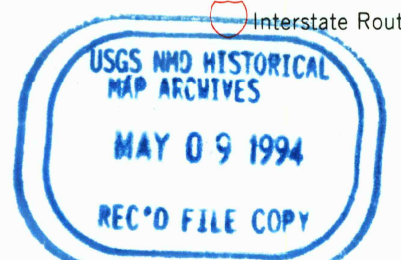


THIS MAP COMPLIES WITH NATIONAL MAP ACCURACY STANDARDS  
FOR SALE BY U. S. GEOLOGICAL SURVEY, DENVER, COLORADO 80225, OR RESTON, VIRGINIA 22092  
A FOLDER DESCRIBING TOPOGRAPHIC MAPS AND SYMBOLS IS AVAILABLE ON REQUEST



ROAD CLASSIFICATION

Primary highway, hard surface	Light-duty road, hard or improved surface
Secondary highway, hard surface	Unimproved road
Interstate Route	U. S. Route
	State Route



LOCKHART NORTH, TEX.  
29097-H6-TF-024  
1983  
REVISED 1994  
DMA 6443 1 NW-SERIES V882

2997-343