

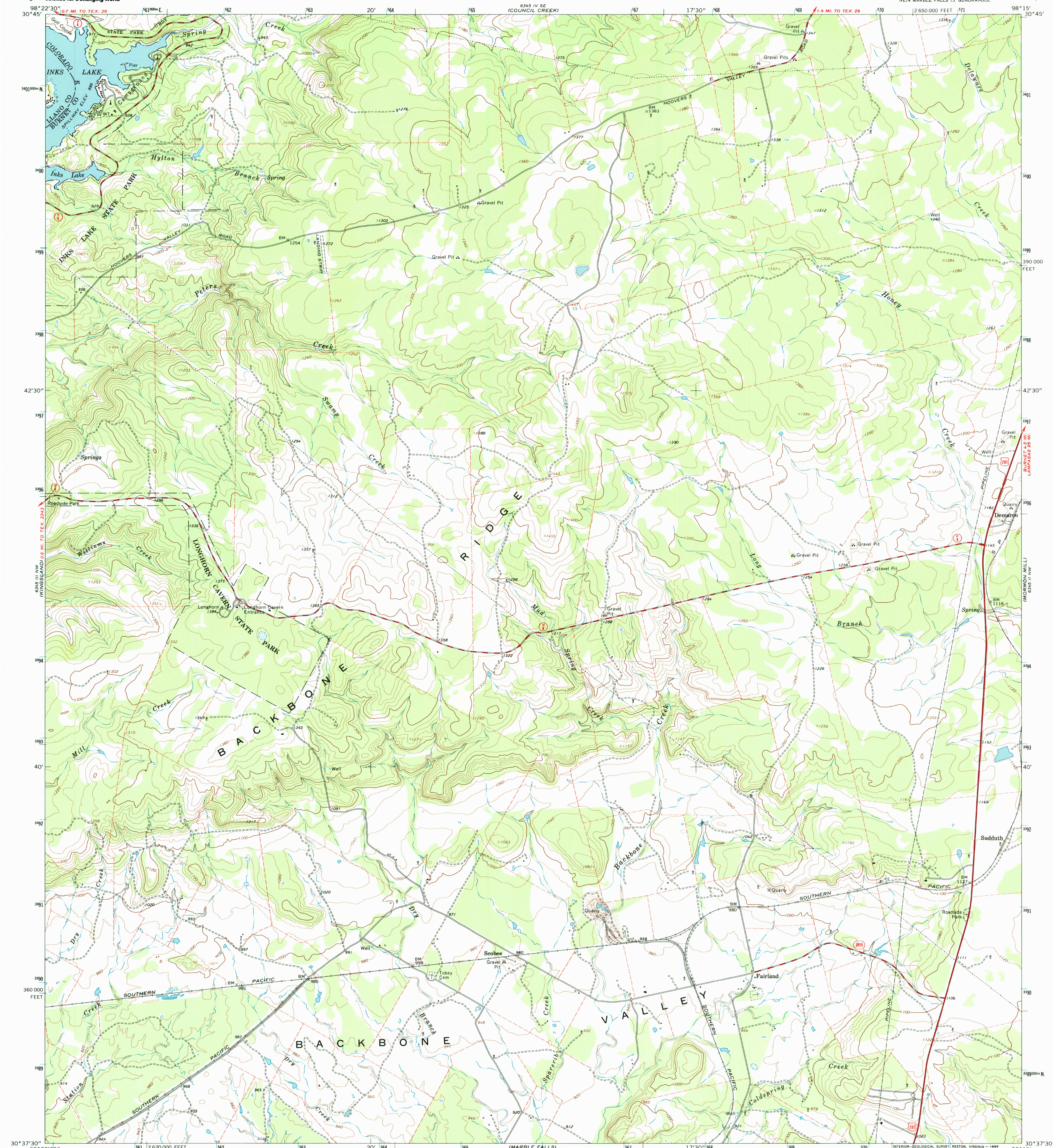
6345 III NW
KINGSLAND 28 MI TO TEX 3342
6345 III NW
KINGSLAND 28 MI TO TEX 3342



U.S. DEPARTMENT OF THE INTERIOR
U.S. GEOLOGICAL SURVEY

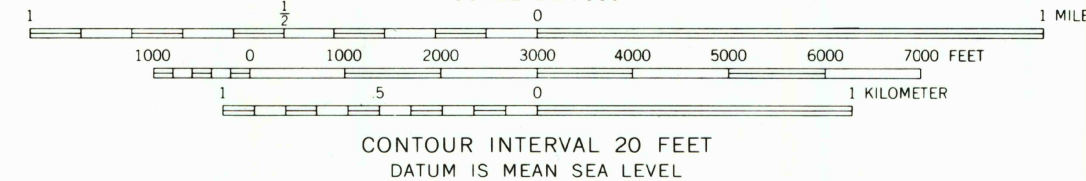
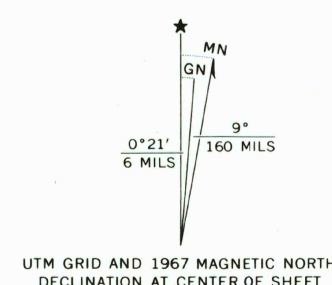
LONGHORN CAVERN QUADRANGLE
TEXAS
7.5 MINUTE SERIES (TOPOGRAPHIC)
NE 1/4 MARBLE FALLS 15' QUADRANGLE

6345 I SW
BURNETT 15 W
LAMPASAS 26 MI



6345 I SW
BURNETT 15 W
LAMPASAS 26 MI

Mapped, edited, and published by the Geological Survey
Control by USGS and USC&GS
Topography by photogrammetric methods from aerial
photographs taken 1966. Field checked 1967
Polyconic projection. 1927 North American datum
10,000-foot grid based on Texas coordinate system,
central zone
1000-meter Universal Transverse Mercator grid ticks,
zone 14, shown in blue
Fine red dashed lines indicate selected fence lines
Map photoinspected 1979
No major culture or drainage changes observed



ROAD CLASSIFICATION
Heavy-duty ——— Light-duty ———
Medium-duty ——— Unimproved dirt - - - - -
U.S. Route ——— State Route ———

RECEIVED LONGHORN CAVERN, TEX.
NE 1/4 MARBLE FALLS 15' QUADRANGLE
N3037.5—W9815/7.5

OCT 31 1998
USGS NMD
HISTORICAL MAP ARCHIVES
1967
PHOTOINSPECTED 1979
AMS 6345 III NE—SERIES V882

THIS MAP COMPLIES WITH NATIONAL MAP ACCURACY STANDARDS
FOR SALE BY U.S. GEOLOGICAL SURVEY, P.O. BOX 25286, DENVER, COLORADO 80225
A FOLDER DESCRIBING TOPOGRAPHIC MAPS AND SYMBOLS IS AVAILABLE ON REQUEST

