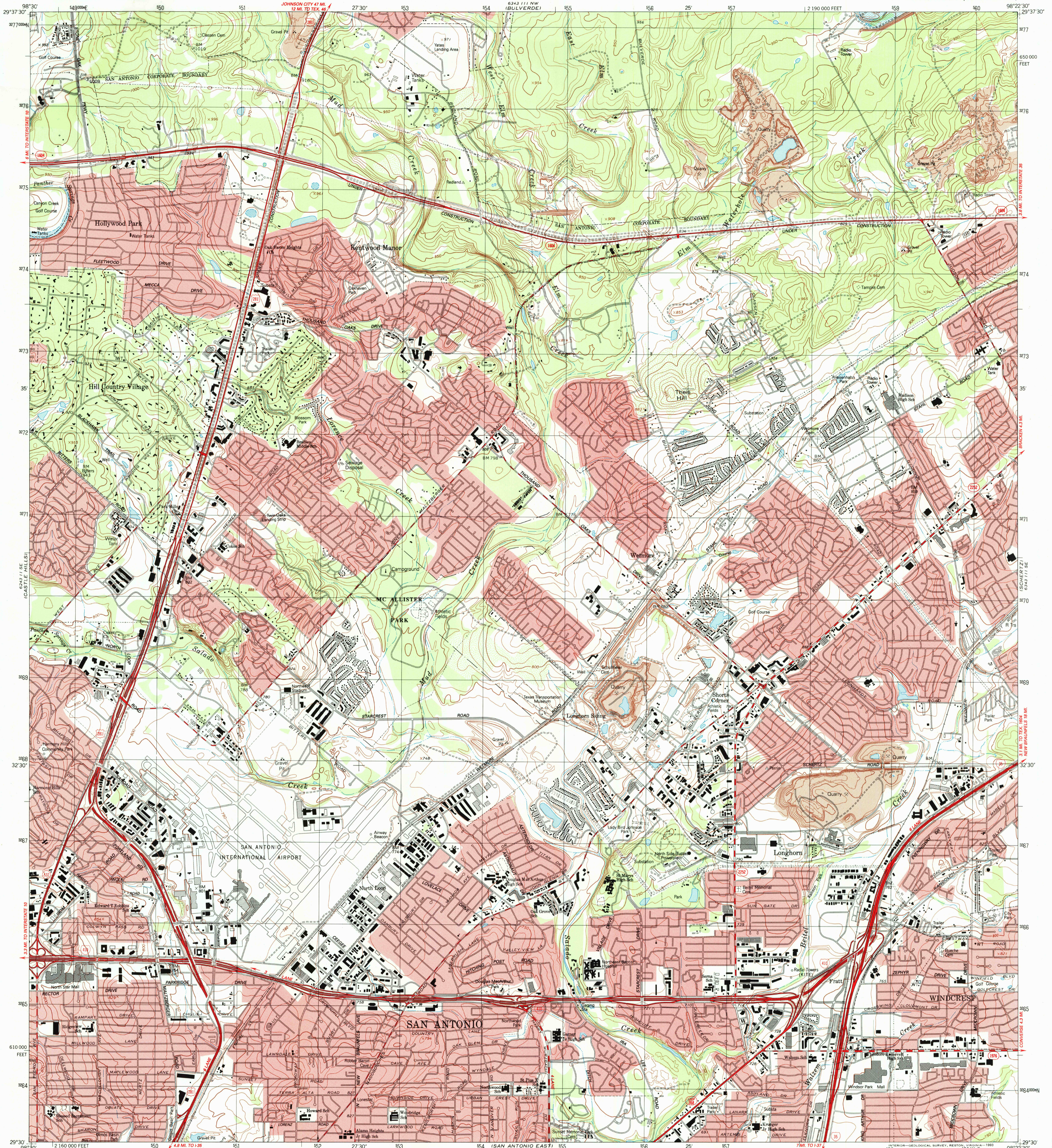


6243 I, NE
(CAMP BELL)

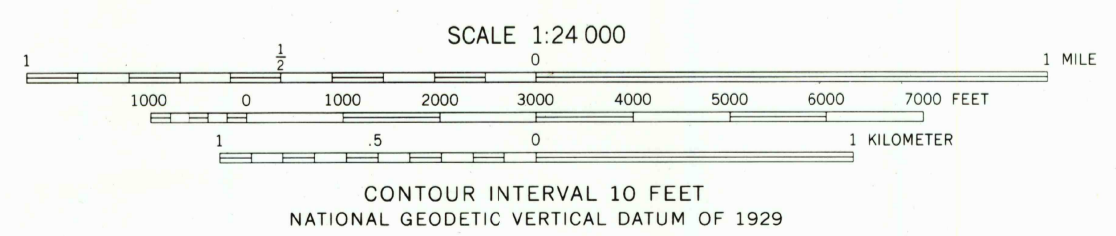
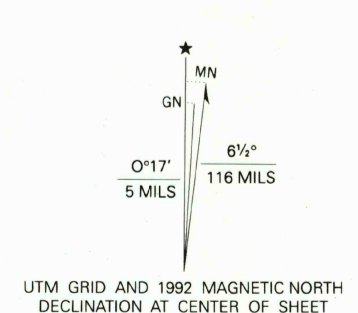
UNITED STATES
DEPARTMENT OF THE INTERIOR
GEOLOGICAL SURVEY

LONGHORN QUADRANGLE
TEXAS-BEXAR CO.
7.5 MINUTE SERIES (TOPOGRAPHIC)

6243 I, NE
(BATELAND)



Produced by the United States Geological Survey
Control by USGS, NOS/NOAA and USCE
Compiled by Defense Mapping Agency from aerial photographs
taken 1952. Revised from aerial photographs taken 1986
and other source data. Field checked 1987. Map edited 1992
North American Datum of 1927 (NAD 27). Projection and
10 000-foot grid ticks: Texas Coordinate System,
south central zone (Lambert Conformal Conic)
1000-meter Universal Transverse Mercator grid, zone 14
The difference between NAD 27 and North American Datum of
1983 (NAD 83) for 7.5 minute intersections is given in USGS
Bulletin 1875. The NAD 83 is shown by dashed corner ticks
Red tint indicates areas in which only landmark buildings are shown
Areas covered by dashed light-blue pattern
are subject to controlled inundation



ROAD CLASSIFICATION

Primary highway, hard surface	Light-duty road, hard or improved surface
Secondary highway, hard surface	Unimproved road
Interstate Route	U. S. Route
	State Route

THIS MAP COMPLIES WITH NATIONAL MAP ACCURACY STANDARDS
FOR SALE BY U.S. GEOLOGICAL SURVEY, P.O. BOX 25286, DENVER, COLORADO 80225
A FOLDER DESCRIBING TOPOGRAPHIC MAPS AND SYMBOLS IS AVAILABLE ON REQUEST

2998-422

LONGHORN, TEXAS
29098-E4-TF-024

1992
DMA 6343 III SW-SERIES V882

DEC 3 1 1997
9780607-570333