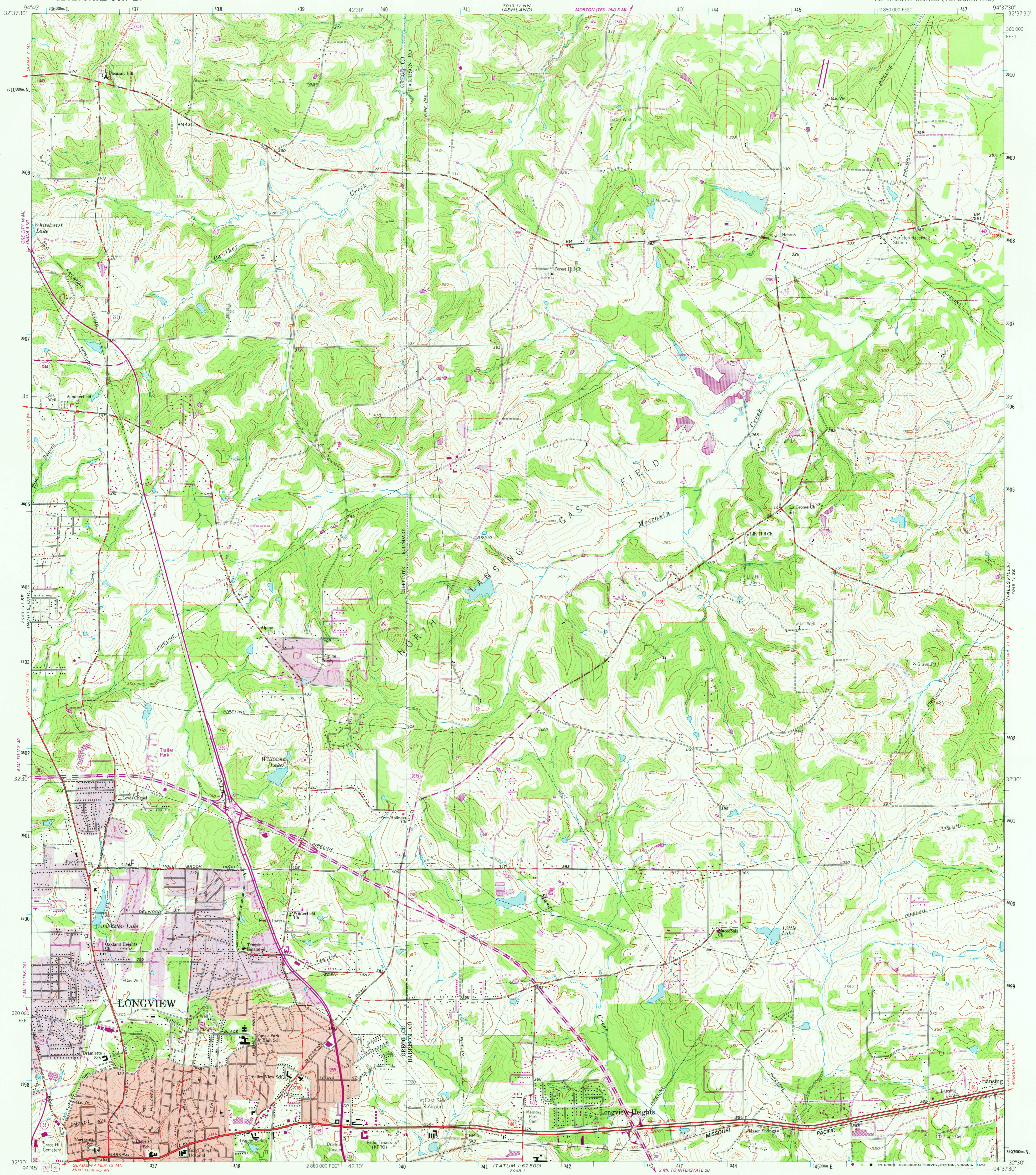


7049 11 NE
GREENWOOD

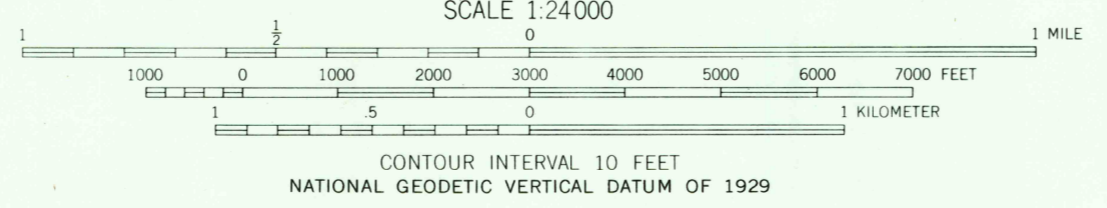
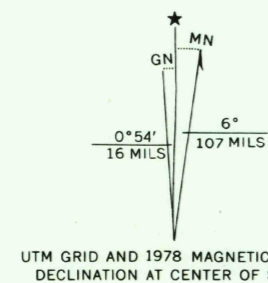
UNITED STATES
DEPARTMENT OF THE INTERIOR
GEOLOGICAL SURVEY

LONGVIEW HEIGHTS QUADRANGLE
TEXAS
7.5 MINUTE SERIES (TOPOGRAPHIC)

7049 11 NE
MARSHALL TOWN



Mapped, edited, and published by the Geological Survey
Control by USGS and USC&GS
Topography by photogrammetric methods from aerial photographs taken 1957. Field checked 1962
Polyconic projection. 1927 North American datum. 10,000 foot grid based on Texas coordinate system, north central zone. 1000 meter Universal Transverse Mercator grid ticks, zone 15, shown in blue.
Red tint indicates area in which only landmark buildings are shown.
Fine red dashed lines indicate selected fence lines.
Revisions shown in purple compiled from aerial photographs taken 1976. This information not field checked. Map edited 1978.
Purple tint indicates extension of urban areas.



ROAD CLASSIFICATION

Heavy-duty	Light-duty
Medium-duty	Unimproved dirt
U.S. Route	State Route

THIS MAP COMPLIES WITH NATIONAL MAP ACCURACY STANDARDS
FOR SALE BY U. S. GEOLOGICAL SURVEY, DENVER, COLORADO 80225, OR RESTON, VIRGINIA 22092
A FOLDER DESCRIBING TOPOGRAPHIC MAPS AND SYMBOLS IS AVAILABLE ON REQUEST

QUADRANGLE LOCATION
3294-312

USGS
Historical File
Topographic Division

LONGVIEW HEIGHTS, TEX.
N3230-W9437 5/7 5
1962
PHOTO REVISION 1978
AMS 7049 11 SW - SERIES V882

AUG 0 1 1978

3300