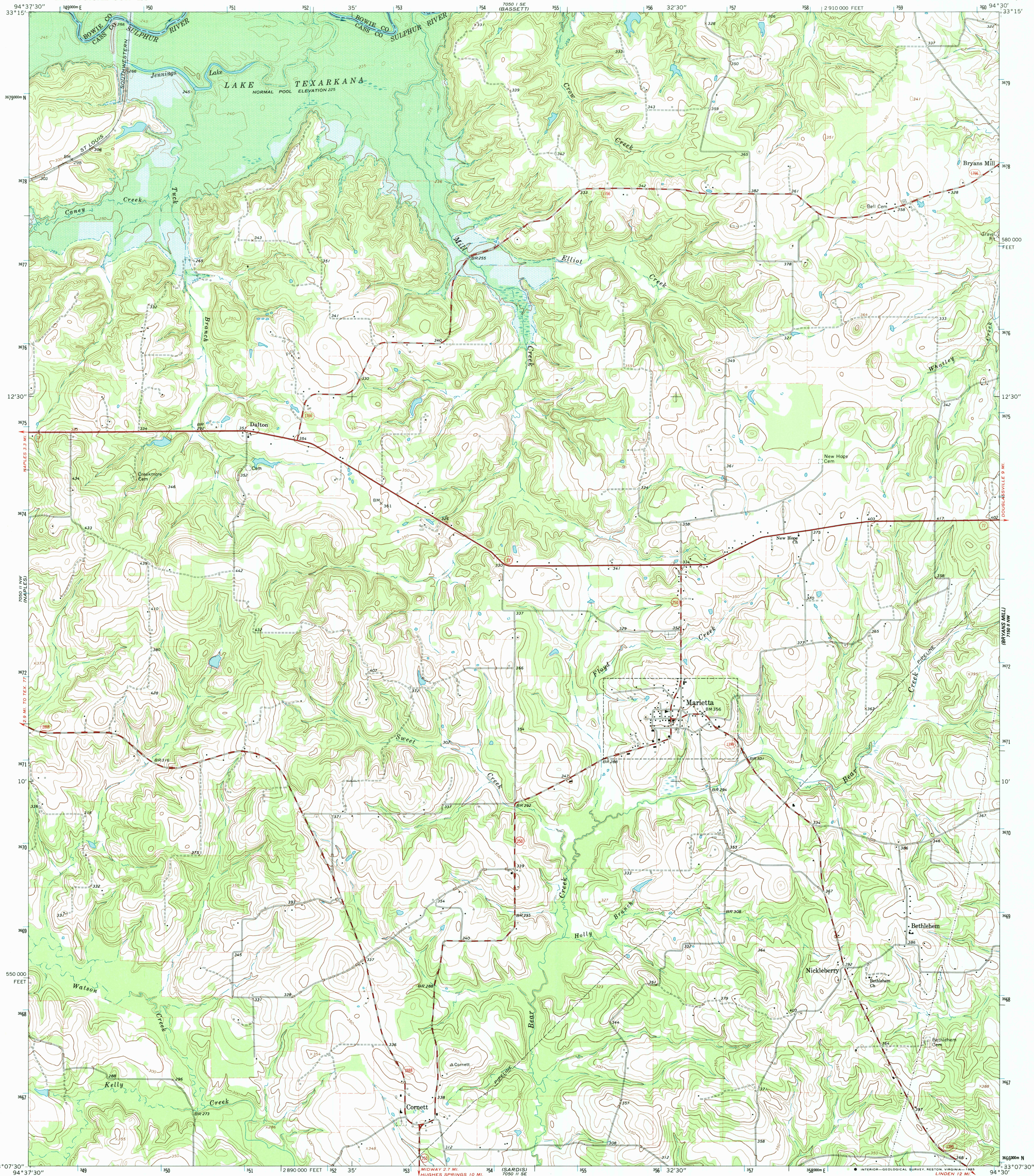


UNITED STATES  
DEPARTMENT OF THE INTERIOR  
GEOLOGICAL SURVEY

MARIETTA QUADRANGLE  
TEXAS  
7.5 MINUTE SERIES (TOPOGRAPHIC)  
NE 4 DAINGERFIELD 15' QUADRANGLE



Mapped, edited, and published by the Geological Survey

Control by USGS and USC&GS

Topography by photogrammetric methods from aerial  
photographs taken 1964. Field checked 1965

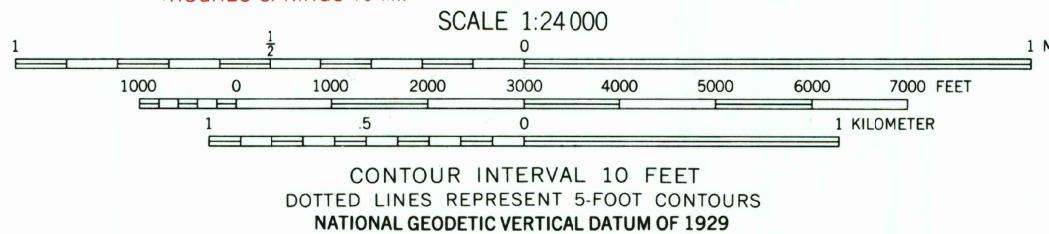
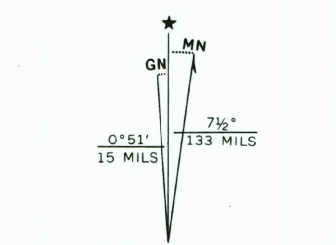
Polyconic projection. 1927 North American Datum  
10,000-foot grid based on Texas coordinate system, north central zone  
1000-meter Universal Transverse Mercator grid ticks,  
zone 15, shown in blue

Fine red dashed lines indicate selected fence lines

Areas covered by dashed light-blue pattern are subject  
to controlled inundation

To place on the predicted North American Datum 1983  
move the projection lines 10 meters south and  
20 meters east as shown by dashed corner ticks

Map photinspected 1976  
No major culture or drainage changes observed



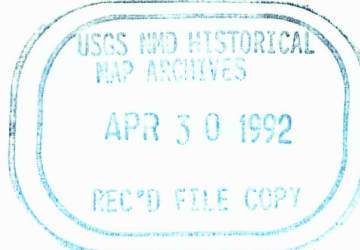
THIS MAP COMPLIES WITH NATIONAL MAP ACCURACY STANDARDS  
FOR SALE BY U. S. GEOLOGICAL SURVEY, DENVER, COLORADO 80225, OR RESTON, VIRGINIA 22092  
A FOLDER DESCRIBING TOPOGRAPHIC MAPS AND SYMBOLS IS AVAILABLE ON REQUEST



QUADRANGLE LOCATION

3394-214

ROAD CLASSIFICATION  
Heavy-duty ——— Light-duty ———  
Medium-duty ——— Unimproved dirt ———  
State Route ○



MARIETTA, TEX.  
NE 4 DAINGERFIELD 15' QUADRANGLE  
33094-B5-TF-024

1965  
PHOTOINSPECTED 1976  
DMA 7050 II NE-SERIES V882