

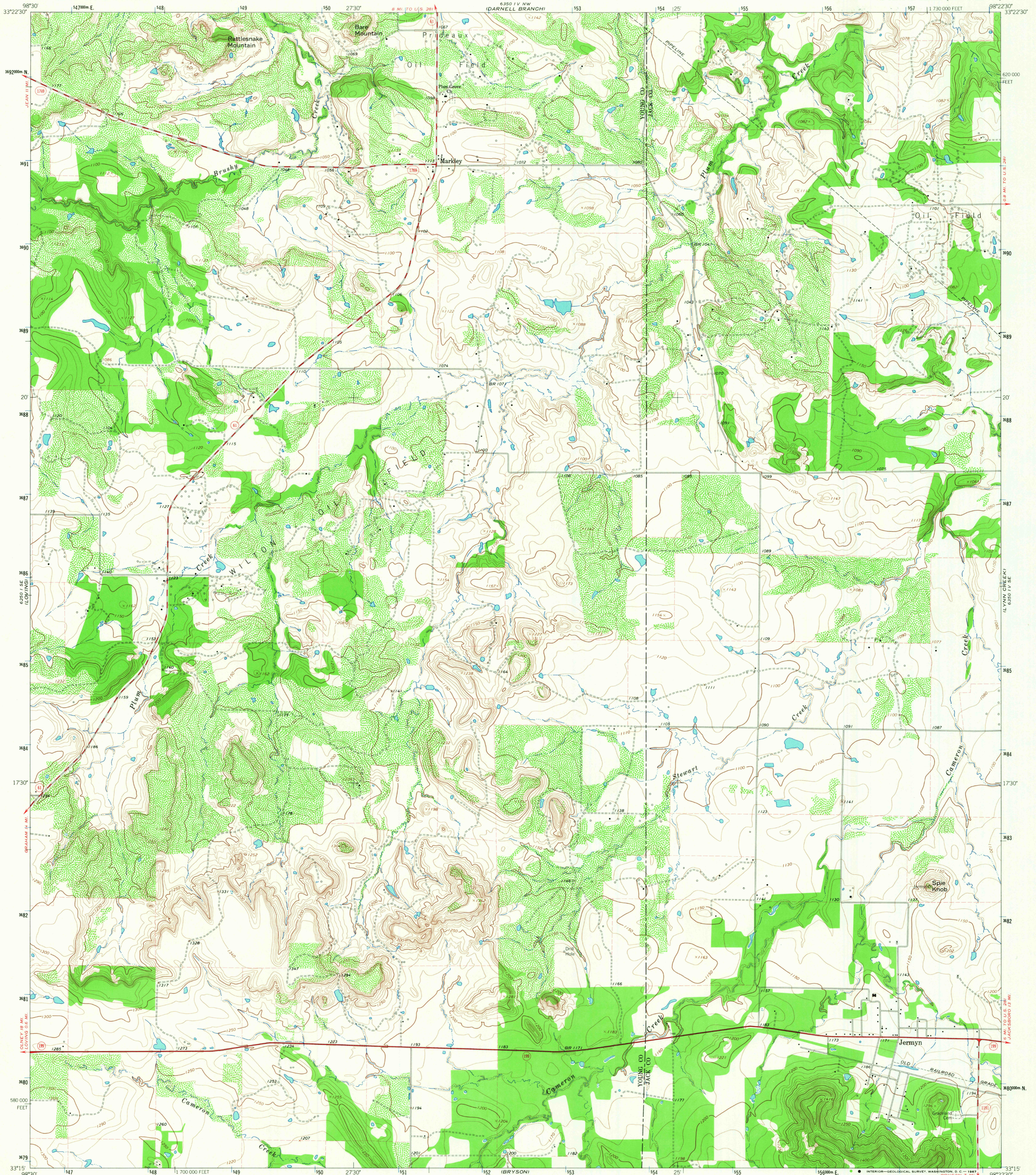
8490 1/4 NE
1/4 SECTION 11 NE
RANGE 28 E

8490 1/4 NE
1/4 SECTION 11 NE
RANGE 28 E

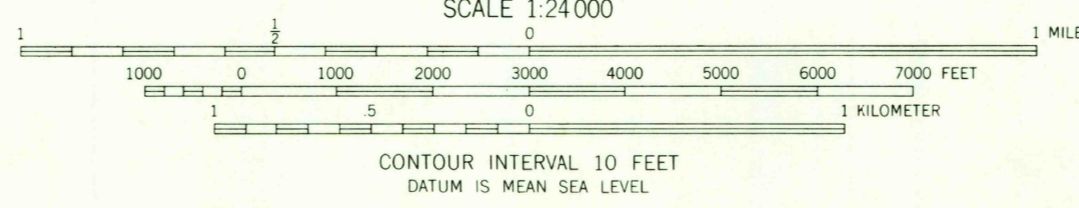
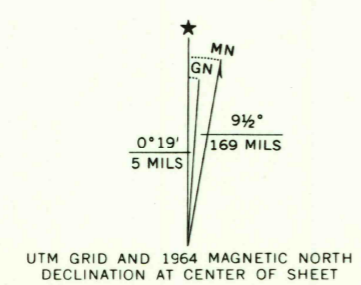
UNITED STATES
DEPARTMENT OF THE INTERIOR
GEOLOGICAL SURVEY

STATE OF TEXAS
TEXAS WATER DEVELOPMENT BOARD

MARKLEY QUADRANGLE
TEXAS
7.5 MINUTE SERIES (TOPOGRAPHIC)



Mapped, edited, and published by the Geological Survey
Control by USGS and USC&GS
Topography by photogrammetric methods from aerial photographs taken 1963. Field checked 1964
Polyconic projection. 1927 North American datum. 10,000-foot grid based on Texas coordinate system, north central zone 1000-meter Universal Transverse Mercator grid ticks, zone 14, shown in blue
Fine red dashed lines indicate selected fence lines



ROAD CLASSIFICATION
Heavy-duty ——— Light-duty ———
Medium-duty ——— Unimproved dirt ———
State Route ○



THIS MAP COMPLIES WITH NATIONAL MAP ACCURACY STANDARDS
FOR SALE BY U. S. GEOLOGICAL SURVEY, DENVER, COLORADO 80225, OR WASHINGTON, D. C. 20242
A FOLDER DESCRIBING TOPOGRAPHIC MAPS AND SYMBOLS IS AVAILABLE ON REQUEST

U.S.G.S.
TOPOGRAPHIC DIVISION

MARKLEY, TEX.
N3315-W9822.5/7.5
1964
AMS 6350 IV SW - SERIES V822

RETURN TO:
USGS AND HISTORICAL MAP ARCHIVES

4095
AUG 23 1967