

RETAINED COPY
This sheet must not be taken from
the files without an order from the
Chief Topographic Engineer.

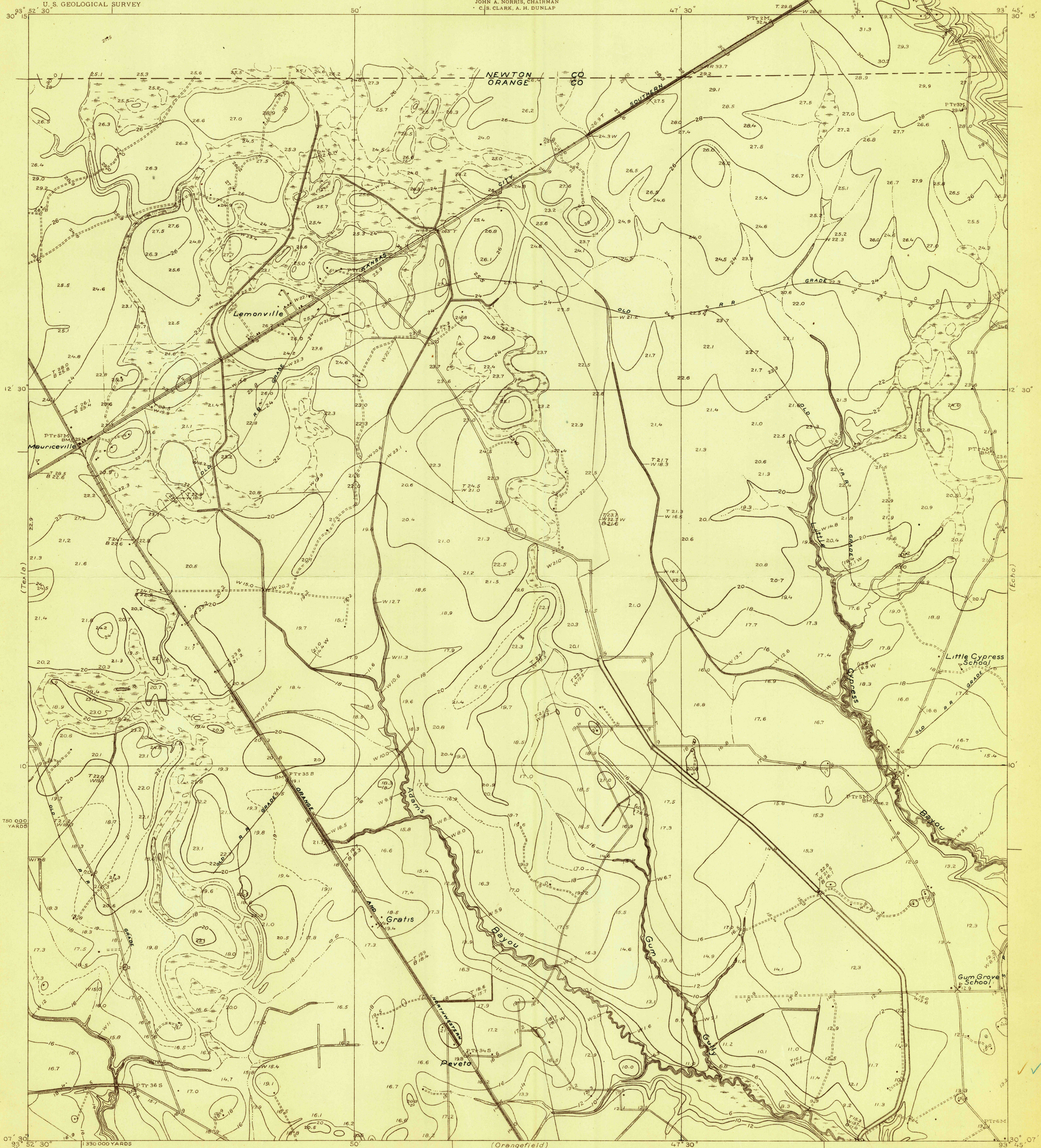
TOPOGRAPHIC FILES

TEXAS (ORANGE COUNTY)
MAURICEVILLE QUADRANGLE

515-S-111-W/2-NE/4
STATE OF TEXAS
BOARD OF WATER ENGINEERS
JOHN A. NORRIS, CHAIRMAN
C. S. CLARK, A. R. DUNLAP

Advance sheet
Subject to correction

DEPARTMENT OF THE INTERIOR
U. S. GEOLOGICAL SURVEY

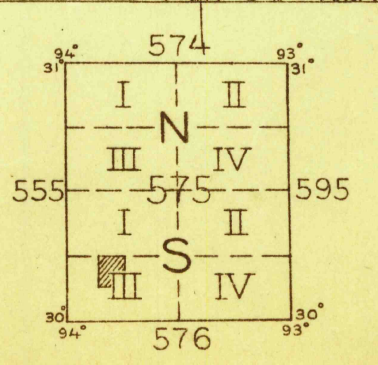


Topography by R. H. Reineck
Culture and drainage in part compiled from aerial photographs
taken by Air Corps, U. S. Army
Control by U. S. Geological Survey
Surveyed in 1926

TRUE NORTH
MAGNETIC NORTH
APPROXIMATE MEAN
DECLINATION, 1926

Scale 24,000
1 0.5 0 1 2 Miles
5000 0 5000 10000 Feet

Contour interval 2 feet
1 foot contours in dashed lines
Datum is mean sea level



Polyconic projection. North American datum
5000 yard grid based upon U. S. zone system, D

Elevation legend
T Top
B Bottom
W Water

Water end
bank opposite

MAURICEVILLE, TEXAS

RETURN TO:
USGS AND HISTORICAL MAP ARCHIVES