

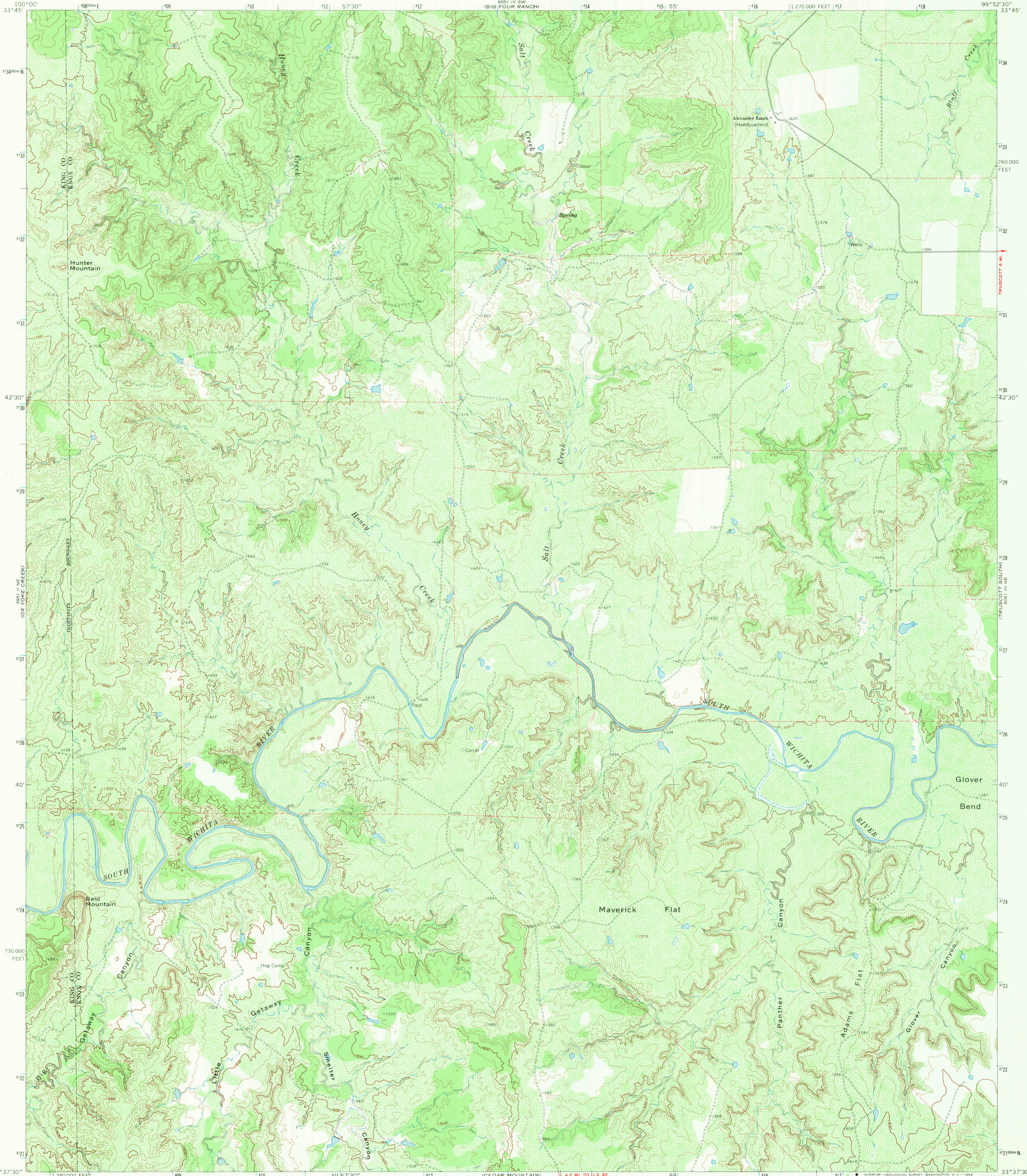
33° 37' 30" N
100° 00' W

UNITED STATES
DEPARTMENT OF THE INTERIOR
GEOLOGICAL SURVEY

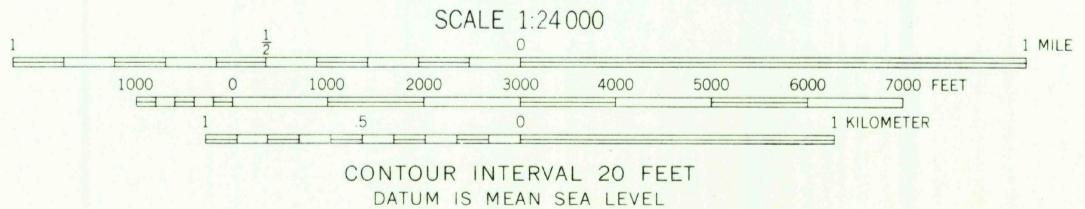
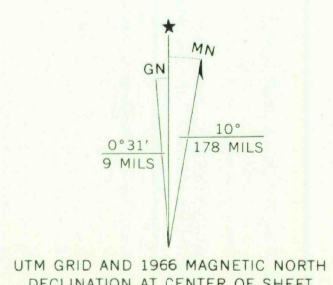
STATE OF TEXAS
TEXAS WATER DEVELOPMENT BOARD

MAVERICK FLAT QUADRANGLE
TEXAS
7.5 MINUTE SERIES (TOPOGRAPHIC)

33° 37' 30" N
99° 52' 30" W



Maped, edited, and published by the Geological Survey
Control by USGS and USC&GS
Topography by photogrammetric methods from aerial
photographs taken 1965. Field checked 1966.
Polyconic projection, 1927 North American datum
10,000-foot grid based on Texas coordinate system,
north central zone
1000-meter Universal Transverse Mercator grid ticks,
zone 14, shown in blue
Fine red dashed lines indicate selected fence lines



U.S.G.S. FILE COPY TOPOGRAPHIC DIVISION

ROAD CLASSIFICATION
Unimproved dirt
MAVERICK FLAT, TEX.
N3337.5-W9952.5/7.5

THIS MAP COMPLIES WITH NATIONAL MAP ACCURACY STANDARDS
FOR SALE BY U. S. GEOLOGICAL SURVEY, DENVER, COLORADO 80225, OR WASHINGTON, D. C. 20242
A FOLDER DESCRIBING TOPOGRAPHIC MAPS AND SYMBOLS IS AVAILABLE ON REQUEST

1966

AMS 6051 III NW-SERIES V882

RETURN TO:
USGS AND HISTORICAL MAP ARCHIVES

DEC 22 1969