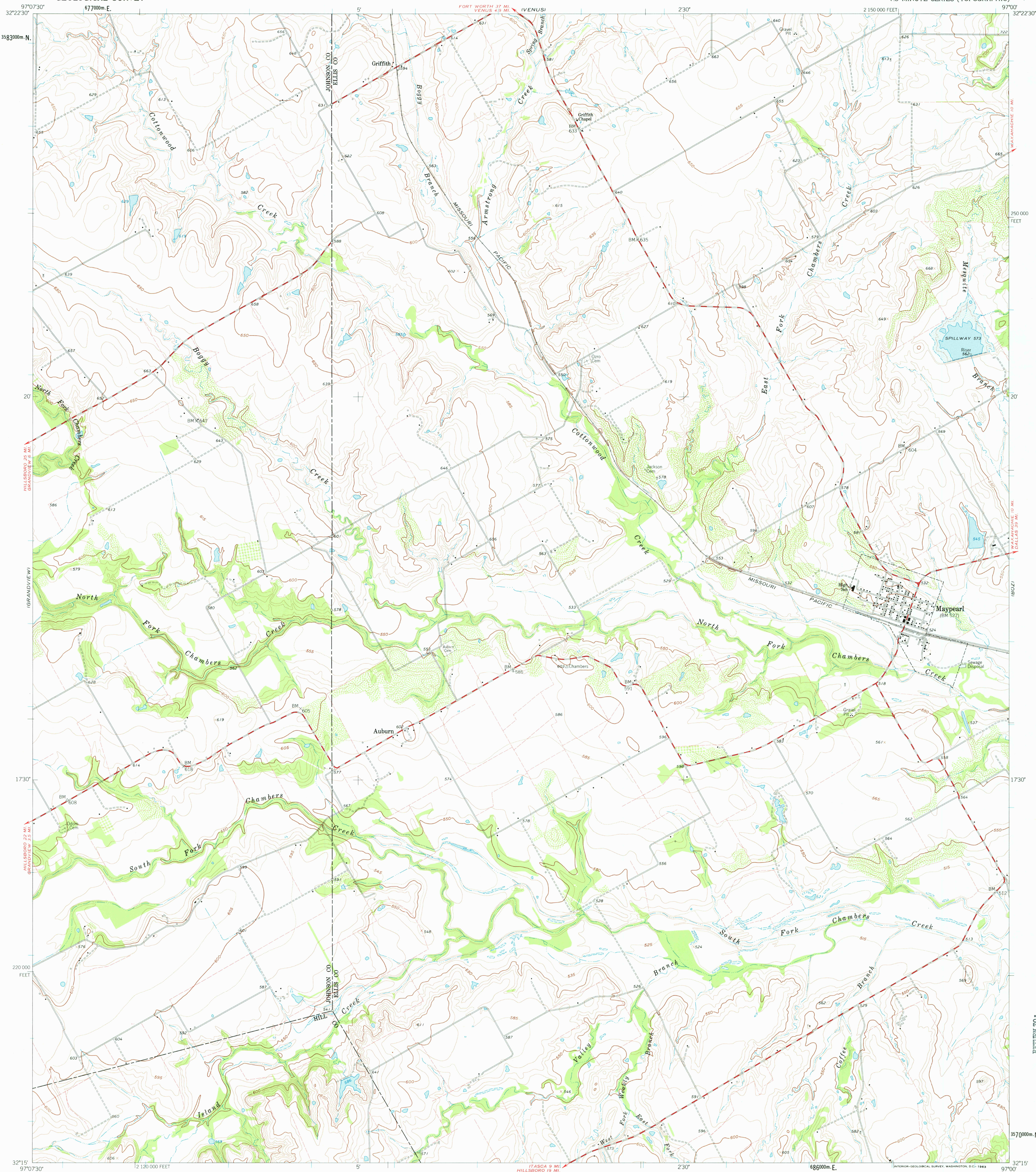


ALVARADO

UNITED STATES
DEPARTMENT OF THE INTERIOR
GEOLOGICAL SURVEY

MAYPEARL QUADRANGLE
TEXAS
7.5 MINUTE SERIES (TOPOGRAPHIC)

INDIOTHIAN



Mapped, edited, and published by the Geological Survey

Control by USGS and USC&GS

Topography by photogrammetric methods from aerial photographs taken 1958. Field checked 1961

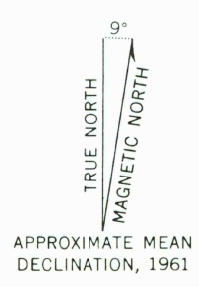
Polyconic projection. 1927 North American datum

10,000-foot grid based on Texas coordinate system, north central zone

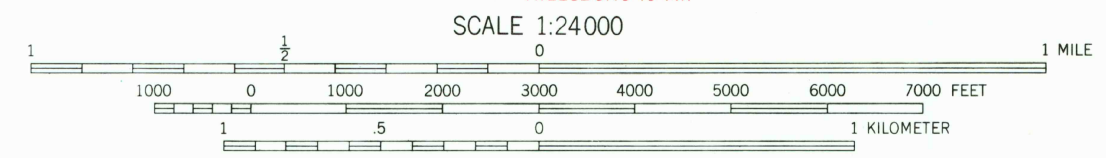
1000-meter Universal Transverse Mercator grid ticks, zone 14, shown in blue

Fine red dashed lines indicate selected fence and field lines where generally visible on aerial photographs. This information is unchecked

Area covered by dashed light-blue pattern is subject to controlled inundation



APPROXIMATE MEAN
DECLINATION, 1961



SCALE 1:24000

1000 0 1000 2000 3000 4000 5000 6000 7000 FEET

1 5 10 15 20 25 30 35 40 45 50 55 60 65 70 75 80 85 90 95 100 METERS

CONTOUR INTERVAL 10 FEET

DOTTED LINES REPRESENT 5-FOOT CONTOURS

DATUM IS MEAN SEA LEVEL



QUADRANGLE LOCATION



ROAD CLASSIFICATION

Medium duty ——— Light-duty ———

Unimproved dirt =

THIS MAP COMPLIES WITH NATIONAL MAP ACCURACY STANDARDS
FOR SALE BY U.S. GEOLOGICAL SURVEY, DENVER 25, COLORADO OR WASHINGTON 25, D.C.
A FOLDER DESCRIBING TOPOGRAPHIC MAPS AND SYMBOLS IS AVAILABLE ON REQUEST

JUL 20 1977
MAYPEARL, TEX.
N3215-W9700/7.5

USGS
Historical File
Topographic Division

1961

1,800

RETURN TO:
USGS AND HISTORICAL MAP ARCHIVES