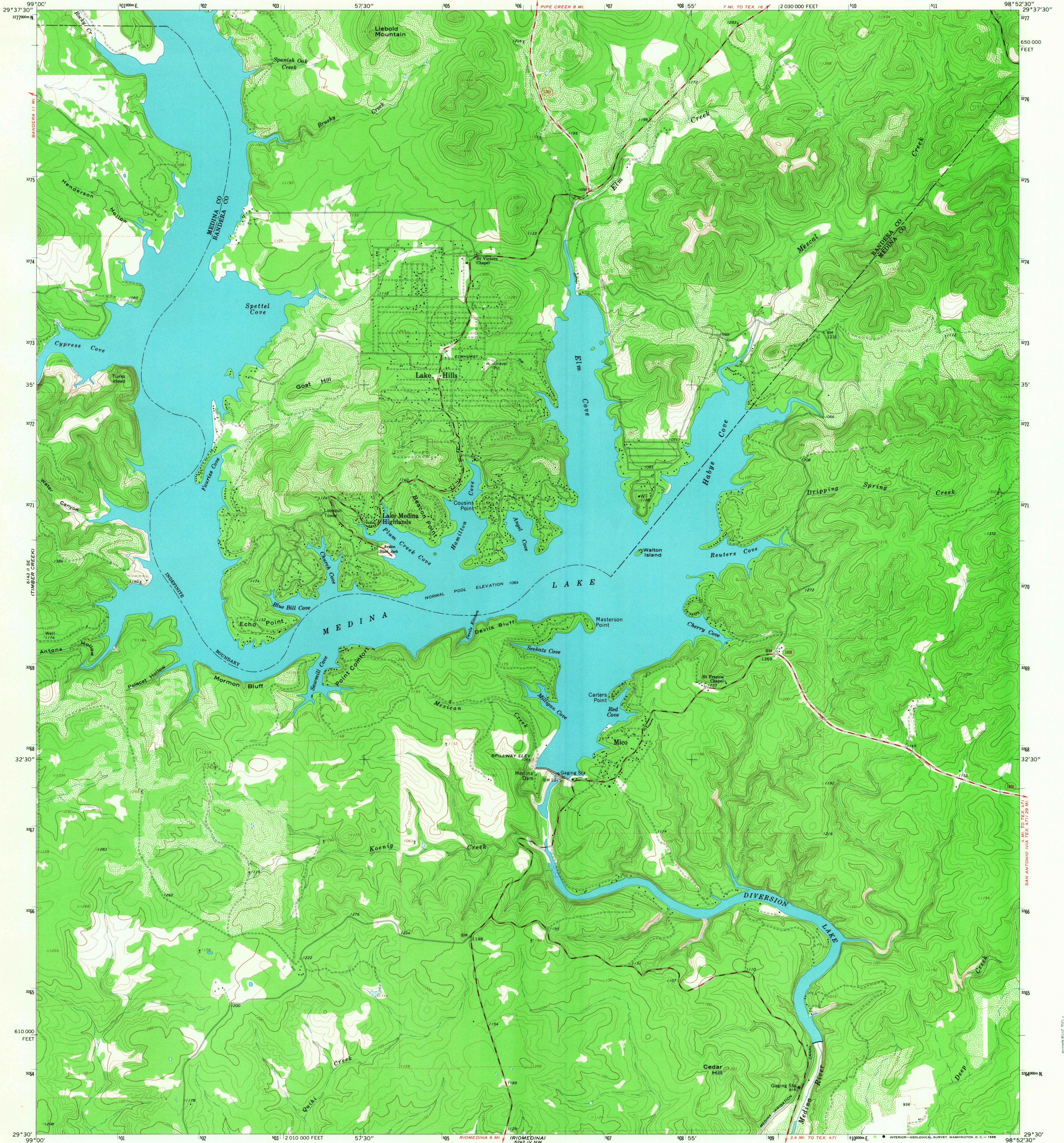


612 1/2 MI
BANDERA

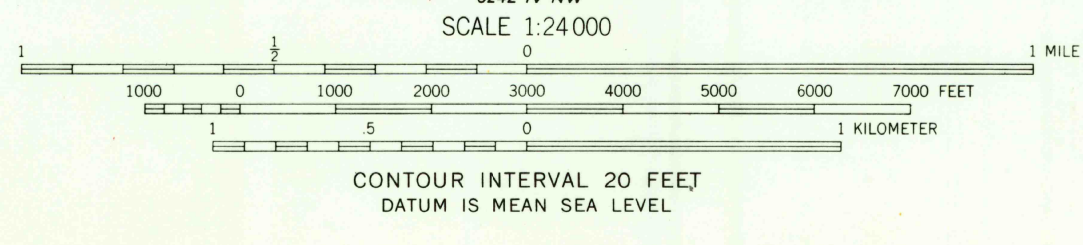
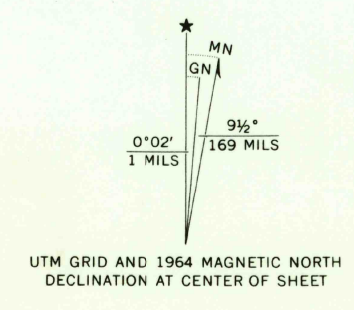
UNITED STATES
DEPARTMENT OF THE INTERIOR
GEOLOGICAL SURVEY

STATE OF TEXAS
TEXAS WATER DEVELOPMENT BOARD

MEDINA LAKE QUADRANGLE
TEXAS
7.5 MINUTE SERIES (TOPOGRAPHIC)



Mapped, edited, and published by the Geological Survey
Control by USGS and USC&GS
Topography by photogrammetric methods from aerial
photographs taken 1963. Field checked 1964
Polyconic projection. 1927 North American datum
10,000-foot grid based on Texas coordinate system,
south central zone
1000-meter Universal Transverse Mercator grid ticks,
zone 14, shown in blue
Fine red dashed lines indicate selected fence lines



ROAD CLASSIFICATION
Medium-duty ——— Light-duty ———
Unimproved dirt - - - - -
Slate Route ○

THIS MAP COMPLIES WITH NATIONAL MAP ACCURACY STANDARDS
FOR SALE BY U. S. GEOLOGICAL SURVEY, DENVER, COLORADO 80225, OR WASHINGTON, D. C. 20242
A FOLDER DESCRIBING TOPOGRAPHIC MAPS AND SYMBOLS IS AVAILABLE ON REQUEST

MEDINA LAKE, TEX.
N2930-W9852.5/7.5
1964
AMS 6243 III SW—SERIES V882

3215
MAR 6 1968

RETURN TO:
USGS AND HISTORICAL MAP ARCHIVES